



San Pedro & Peninsula

Visitor

August 2019



The Town of the Arts

What to See & Do ★ Where to Dine

August Calendar of Events

All About August

3 The Town of the Arts
6 August Calendar of Events

10 Specials! Offers! Discounts!
12 San Pedro Café Serves Great Food

13 Dining Guide
15 The Directory

The Arts

San Pedro's **First Thursday Art Walk** is known as a great time to see the arts, meet the artists, and have lots of fun. Galleries and studios are open, restaurants have specials and entertainment. There's an open mic at **The Grand Annex**, 434 W. 6th Street. This month First Thursday is on August 1. Everything kicks off beginning at 6 p.m. **The Art Walk** takes place between 4th and 9th Streets and Palos Verdes Street and Pacific Avenue. There will be live music at the corner of 6th and Mesa Streets. A free guided art walk tour begins at the **San Pedro Chamber of Commerce**, 390 W. 7th Street. Get the line-up of openings and special events for evening at www.1stThursday.com.

There's one more rendition of **Music By The Sea** this year and it will be Sunday,

San Pedro & Peninsula Visitor

Volume 5, Number 9 August 2019
San Pedro & Peninsula Visitor is published by Visit San Pedro, the independent tourism authority serving San Pedro, the Los Angeles Harbor and Palos Verdes Peninsula communities, and Catalina Island. Visit San Pedro is a division of the Southern California Education, Tourism, and Cultural Organization, a tax-exempt 501(c)(3) organization (EIN 81-5144415)



310-729-9828 www.VisitSanPedro.org

Admiral Sponsors

Spirit Cruises | It's Showtime
The Deco Art Deco Building

On the cover—**San Pedro Photographers Association** member **Mark Radmilovich** photographed the new 25th Street Mural for this month's cover. Local mural artist **Julie Bender** led the way on the long but creative process to construct the 2000-foot mural west of Patton Avenue. Getting the wall done required an amendment to the city's mural ordinance, negotiations, and the help of more than 300 volunteers who helped create art that reflects the community, its history, nature, and spirit. The mural was officially unveiled on June 30. It's public art, so it's available 24 hours a day for viewing. For details, visit www.JulieBenderMosaics.com.

August 4. Quintana will kick it off at noon; In Contempt Band plays starting at 1:45 p.m.; and Down the Hatch finishes things off beginning at 3:30 p.m. It all takes place in beautiful Pt. Fermin Park at 807 Paseo del Mar on the Peninsula. It's right at the end of Gaffey Street. Information is available at 323-335-9226, www.MusicByTheSea.rocks

For the Family

Head out to sea on a rare **Summer Whale Watch** with naturalists to search for some of the 2,000 whales that live along the California coast. It's on Sunday, August 4 sailing at 9 a.m. The voyage is aboard **Spirit Cruises** and leaves from Dock 9, 429 Shoreline Village Drive, Shoreline Village, Long Beach. 310-548-7562, www.CabrilloMarineAquarium.org. Reservations required. \$25/\$30.

Phineas Banning was the father of Los Angeles Harbor—and much more. **Banning Museum** will hold a Birthday Celebration for this notable historic hero on Saturday, August 17 beginning at 5 p.m. The celebration will be a fiesta with Mariachi and Folkloric dance, Mexican dinner. Or bring your own food and beverage and have a picnic. The Banning Museum, 401 E. M Street, Wilmington. 310-548-2005, www.TheBanningMuseum.org

Here's your chance to tour Navy ships and salute the military during the 2019 edition of **Los Angeles Fleet Week**. There will be entertainment, informative demonstrations, and lots of sailors and Marines around town. Ship tours are generally at the World Cruise Terminal, 100 Swinford

Street on the Waterfront. Times of events vary. Check out the latest information at www.LAFleetWeek.com.

Dining

Rise & Shine

San Pedro Cafe, at 605 S. Pacific Avenue, is well-known (and well-loved). Big portions expertly prepared. Always cage-free eggs and other fresh ingredients. It's right in the middle of Uptown Pacific Avenue and it's well worth a visit. (Open for dinner Thursday through Sunday, too.) www.WeLoveSPC.com.

Gaffey Street Diner at 247 N. Gaffey Street is right off the freeway and easy to get to. You can count on longshoreman-size portions, fresh ingredients, and the long-time menu favorites—just with some additional enticements and a renewed commitment to great customer service.

The Grinder has been a tradition for 40 years—and it just keeps getting better. Great breakfasts, lunch, dinner. Right on the Waterfront at 511 S. Harbor Blvd. Check its website at www.GrinderRestaurants.com for coupons.

It's not possible to find a better breakfast served all day than at **Happy Diner** (1 & 2). They've got all your favorite traditional choices and Mexican specialties, too. Everything is prepared with care and love at this family-owned business. Happy Diner, 617 S. Centre Street, Downtown; Happy Diner 2, 1931 N. Gaffey Street, NW San Pedro. www.HappyDinerSP.com.

Discover This Month

Wednesday Lunch at the LA Yacht Club

Every Wednesday there's a luncheon at the **Los Angeles Yacht Club** that by tradition is open to the public.

The luncheon features a speaker on a nautical topic and there's always a great three-course meal. It's a chance to experience the very friendly yacht club that has lots of history. (Humphrey Bogart was a member.)

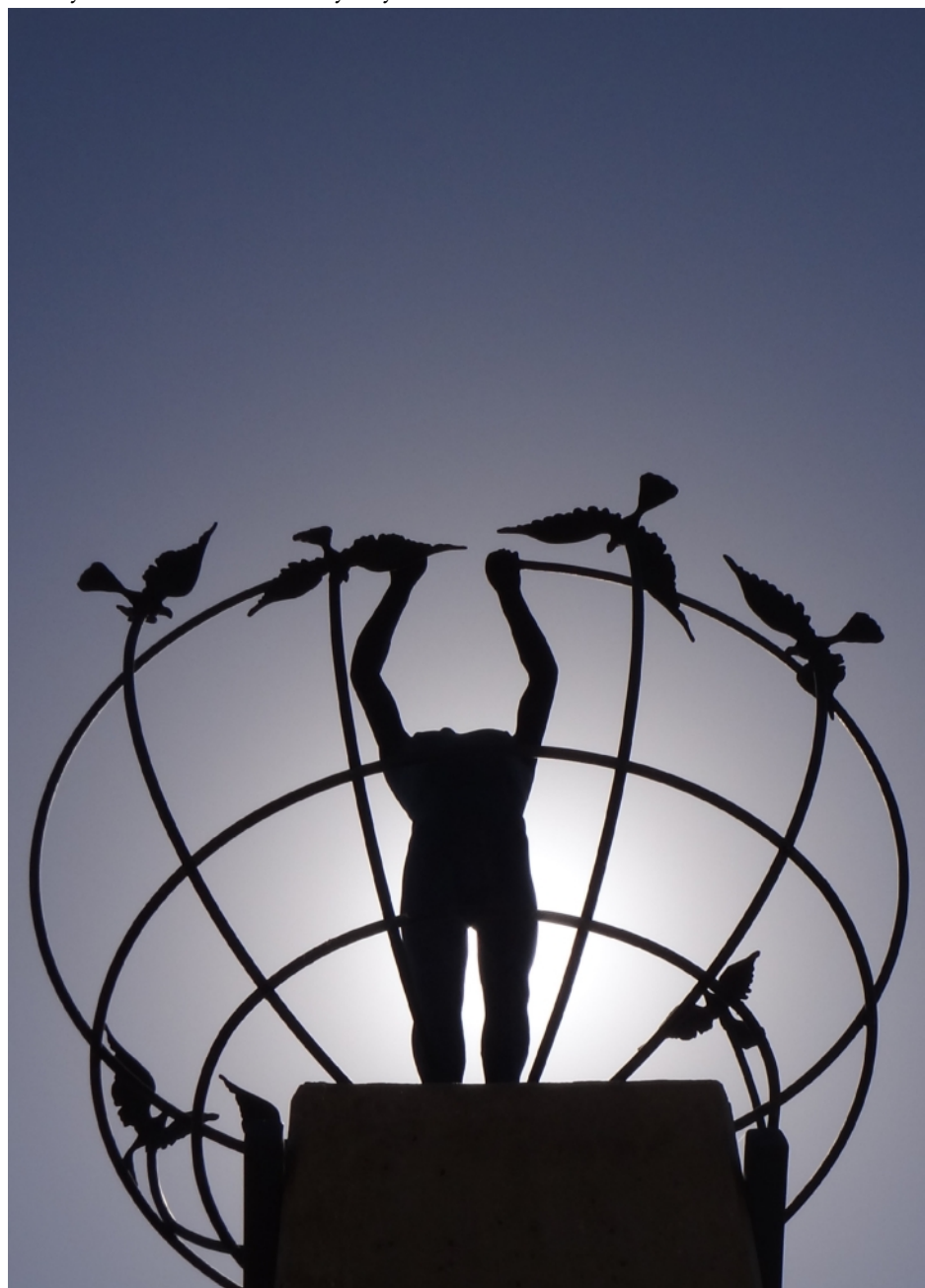
You can take a look at the Transpac Room that houses the club's library and see the trophies from more than a hundred years of competitive sailing.

The Los Angeles Yacht Club is located at 285 Whalers Walk on Waterfront next to the DoubleTree by Hilton Hotel. Reservations are suggested. Call the club at 310-831-1203 or visit www.LAYC.org.

The Town of the Arts

From performance to fine arts to crafts, you'll find it all in San Pedro and on the Peninsula

Whether it's an intimate studio visit with a working artist or a mammoth production at the Warner Grand Theatre and no matter what your taste or favorite style, you'll find it somewhere around San Pedro and the Palos Verdes Peninsula



Multicultural Man is a statue on LA Waterfront's promenade along Harbor Blvd. The statue was a gift from San Pedro's Sister City, Ischia, Italy. Ischia is also a place much of San Pedro's Italian-American population have their roots. (In recognition of the Italian-American heritage, 15th District Los Angeles City Council Member Joe Buscaino has gotten part of 6th Street and a town square project starting construction next month in front of the Los Angeles Maritime Museum will be designated as "Little Italy.")

For 82 years now, the **San Pedro Art Association** has been the standard bearer for local artists.

Its large gallery space at **CRAFTED at the Port of Los Angeles** is home base for a large range of artists. And through this month it's also hosting the Harbor Wide All Grades Student Art Competition and Exhibition, where you can see outstanding works from area students.

The association also has a group exhibition every Friday at the Downtown San Pedro Farmers Market on 6th Street between Pacific Avenue and Mesa Street.

Drop by and see the member artists at any of their exhibitions. They love to discuss their work.

The **San Pedro Waterfront Arts District** is proof that the area is a great center for the arts. It's been designated as one of 14 Cultural Districts in the state of California. And there's only one other in all of Los Angeles. A Cultural District, as outlined by the program, is a well-defined geographic area with a high concentration of cultural resources and activities.

Downtown San Pedro and its immediate surroundings are home to more than 90 visual artists, as well as restaurants, performing arts venues, and art galleries.

The Arts District has led the way in making art more accessible by sponsoring public art projects. Its projects include artist-painted city Department of Transportation utility boxes and large scale murals, along with events throughout the year.

See the article on page 12 about the Arts District's latest project: A mural at Sirens' Java & Tea at the corner of 7th and Mesa Streets on First Thursday, August 1.

With all the arts going on around town, you'll want to keep up with what's new and current. About the best way to do this is by reading **Random Lengths News**. Whether you're looking for music or visual arts, *Random Lengths* always has extensive coverage on what's hot. And its online calendar is extensive. It's the only locally produced newspaper, coming out every other Thursday. You can find it at more than 300 locations around the area.

Our Creations is a place that helps others be creative. It offers arts and craft supplies, as well as everything needed to create wedding, quinceañera, and other special occasion décor. And it has outstanding painting classes.

It's like a treasure trove for creative people, with many hard-to-find items, as well as essential basics for creating great works.

Plus, **Our Creations** is well-known throughout the region as the best spot to find Día de Los Muertos calacas and calaveras creations. Día de Los Muertos originated in the Aztec traditions of honoring the dead. And **Our Creations** originated Historic Downtown San Pedro's día event.

Continued on page 4...

The Town of the Arts

San Pedro is home to world-class art

...Continued from page 3

And you'll find world-class art at Parkhurst Galleries. Parkhurst features exhibitions by top artists and its Painting with the Masters instructional program helps everyone from beginners to well-experienced artists develop their styles and techniques, culminating with an exhibition at the end of each program.

The gallery was founded in 1947 by artist Violet Parkhurst. Her legendary seascapes are collected by over 5 million people around the world including four U.S. Presidents, two presidents of China, a King of Saudi Arabia, and a host of celebrities including her very first admirer Clark Gable.

Parkhurst paintings are on permanent collection in dozens of museums around the world including the China National Museum of Fine Art and the Stockholm Museum. She has also been on exhibit in the Louvre and Prado Museums.

And Violet Parkhurst originals can be purchased at the Parkhurst Gallery, along with a range of other great artists' works.

Parkhurst Galleries also offers oil painting classes, custom framing, fine art restoration, and appraisal services.

Don't miss the Parkhurst Artists' Exhibit Reception Saturday, August 17 from 5 to 8 p.m. in the gallery. It showcases the work of new and veteran artists. Food, wine, and entertainment.

Mario's Art Gallery is a place of simple beauty. Mario Mirkovich is originally from Split, Croatia and has wide experience as a commercial artist. And now he concentrates on fine art particularly oil paintings, that features Southern California scenes. Mario is a renowned teacher and lecturer, as well as one of the best-known painters in the region. He also offers painting classes in the gallery. His students are learning from one of the best.

If you want to see a lot of high-quality arts and crafts, **CRAFTED at the Port of Los Angeles** is the place to go.

This year-round craft marketplace, which opened in 2012, transformed a disused World War II-era port warehouse number 10 and turned it into a vibrant venue for talented handcraft artisans.

With some 50 vendors displaying their work, CRAFTED is a place where anyone can spend a day and marvel at the skill that goes into the work on display.

It's home to the San Pedro Art Association gallery along with vendors ranging from craft foods, jewelry, textiles, cosmetics, and home décor.

San Pedro City Ballet could be called the home of champions. It is perhaps best known as the school where American Ballet Theatre principal dancer Misty Copeland got her start. And there are new dancers following in her footsteps every year.

The Ballet was established in 1994 on the base of classical works and traditions, and goes beyond them to explore new contemporary and original modern works and to provide training to schools throughout Los Angeles for arts education and after-school programs.

The company performs *The Nutcracker* annually at the Warner Grand Theatre, as well as produces original modern works for a variety of venues throughout Southern California. In addition, San Pedro City Ballet, through its outreach programs, holds performance workshops throughout the city of Los Angeles. Thousands of residents see the company perform each year.



MARIO'S ART GALLERY—It's a place you can see Mario Mirkovich's beautiful paintings. It's also a place where you can learn from the very gifted and legendary Southern California artist himself. Mario's Gallery is located at 2438 S. Western Avenue on the Peninsula, adjacent to the corner of 25th Street and Western Avenue. It is open 11 a.m. to 4 p.m. Tuesday through Saturday and by appointment.

There are many galleries around San Pedro and there are studios with resident artists. The Loft is a repurposed warehouse that is home to galleries with transient shows and studio work and display spaces. This month Canner Row Studio in **The Loft** is hosting **Experimental Artists of the South Bay**, which include two of San Pedro's favorite artists, **Pat Wooley** and **Gloria D. Lee**. The Experimental Artists use demonstration and interactive workshops and encourage experimentation with new methods, materials and techniques to enhance and invigorate their work. The last opportunity to see their works in this exhibition will be Saturday, August 17 from 2 to 5 p.m.

TANGOVINO! will be quite an evening that brings together dance, music, food, wine, and spirits under an

Argentinian theme and benefits San Pedro's **Pacific Food & Beverage Museum**. There will be tango lessons and demonstrations. And it begins at 7 in the **Penthouse of the Deco Art Deco Building** at 741 S. Pacific Avenue. See the listing in the **Calendar of Events** for details on getting tickets.

And this month brings the grand finales of **Shakespeare by the Sea's** two productions: "Henry V" and "A Comedy of Errors." Both finales will be in Pt. Fermin Park at 807 Paseo del Mar on the Peninsula.

"Henry V" wraps on Friday, August 16 and "A Comedy of Errors" on Saturday, August 17. Check the **Calendar of Events** listings for the details.

And the producers who bring you Shakespeare by

the Sea also bring San Pedro professional theater throughout the year. Little Fish Theatre is an intimate space that presents compelling dramas and hilarious comedies with some of Southern California's best actors.

This month "The Lonsome West" premieres on Thursday, August 22 and runs through September 15. It's a play set in the west of Ireland that boldly pits family members against one another. (Be aware that the show includes graphic language, slurs, on stage violence, and dark themes.)

It is, as with all the shows in Little Fish Theatre's always ambitious schedule, not to be missed.

See the **Calendar of Events** listing and get information at www.LittleFishTheatre.org.

Where to Find the Arts in San Pedro

CRAFTED at the Port of Los Angeles, 112 E. 22nd Street, LA Waterfront. 310-871-0686, www.CRAFTEDPortLA.com

First Thursday Art Walk, Downtown San Pedro between 4th and 9th Streets and Palos Verdes Street and Pacific Avenue. www.1stThursday.com

The Loft, The Loft, 401 S. Mesa Street, Downtown. 310-245-0517, Facebook: @Loft401smesa

Mario's Art Gallery 2438 S. Western Avenue, Peninsula. 310-548-9077, www.MarioMirkovichFineArt.com

Our Creations décor, crafts, & supplies, wedding, party, 416 W. 6th Street, Downtown. 310-519-8231

Parkhurst Galleries, 439 W. 6th Street, Downtown. 310-547-3158, www.ParkhurstGalleries.com

Random Lengths News Available at newsstands throughout the area. www.RandomLengthsNews.com

San Pedro Art Association, at Crafted at the Port of Los Angeles, 112 E 22nd Street, Waterfront. 310-831-2928, www.SanPedroArt.org

San Pedro City Ballet, 1231 S. Pacific Avenue, San Pedro. 310-732-1861, www.SanPedroCityBallet.org

San Pedro Waterfront Arts District, 310-832-7272, www.SanPedroWaterfrontArtsDistrict.com

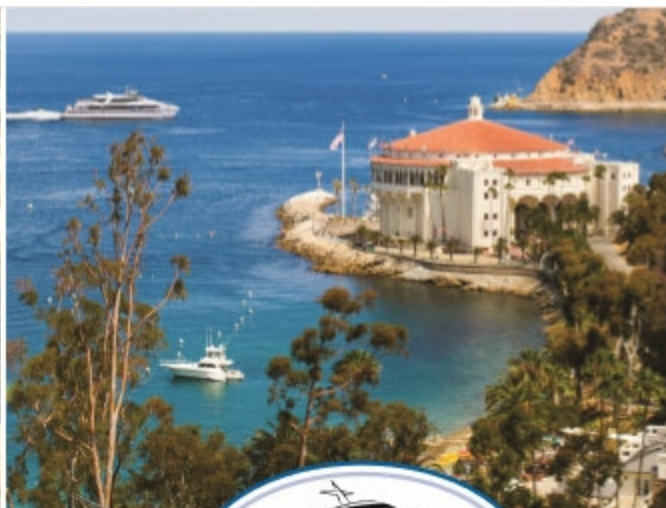
Both the Palos Verdes Peninsula and Catalina Island host vibrant arts communities with exhibitions, events, classes, and many other ways to explore creativity.

Palos Verdes Art Center www.PVArtCenter.org

Visit Catalina Island www.VisitCatalinaIsland.com

And for all the arts events all year long, check the calendar at

www.VisitSanPedro.org



Your Catalina Island journey begins with us.

8 FAST MODERN BOATS. 1 HOUR BOAT RIDE. UP TO 30 DEPARTURES DAILY.

Experience Catalina Island, just an hour boat ride from Southern California's coast! Scenic beauty, high adventure activities, great dining or simply rest and relaxation. With up to 30 departures daily from San Pedro, Long Beach and Dana Point, take the trip for a day, or stay overnight.

CatalinaExpress.com | 800.622.2419



Calendar of Events

San Pedro | Harbor | Peninsula | Catalina Island

Thursday, August 1

Farmers Market

9 a.m.-2 p.m.

Providence Little Company of Mary Medical Center, 1300 W. 7th Street, Above Gaffey

Heart of the Harbor Local Farmers Market

9 a.m.-1 p.m.

L Street between Avalon Blvd. and Marine Avenue, Wilmington

First Thursday Art Walk

6 p.m.

San Pedro's arts night out. Galleries and studios

are open, restaurants have specials and entertainment.

Between 4th and 9th Streets and Palos Verdes Street and Pacific Avenue. Music at the

corner of 6th/Mesa Streets.

Free guided art walk tour

beginning at the San Pedro Chamber of

Commerce, 390 W. 7th Street, which will visit both

the unveiling of the new mural at Sirens Java &

Tea and the poetry corners. www.1stThursday.com

The New Whalers

7 p.m.

Five-piece swinging New Orleans jazz band. The

Whale & Ale

British

Restaurant

and Pub,

327 W. 7th

Street

Downtown.

310-832-

0363,

www.WhaleAndAle.com

Movie in the Park

8 p.m.

A free showing of the film "Frozen." Ernie J.

Howlett Park, 25851 Hawthorne Blvd., Rolling Hills

Estates, Peninsula

Friday, August 2

Downtown Farmers Market

9 a.m.-2 p.m.

Farmers market held on 6th Street between

Pacific Avenue and Mesa Street Fruits,

vegetables, flowers, crafts, jewelry, art, food stalls

Free Family Movie Night

6:30 p.m.

Showing "Spider-Man: Into the Spider-Verse"

presented outdoors by the Port of Los Angeles.

Petting zoo and craft making. CRAFTED at the

Port of Los Angeles. 112 E. 22nd Street,

Waterfront. www.LAWaterfront.org

The Paul Gormley Trio

7 p.m.

World class musicians performing traditional jazz

with songs made popular from Sinatra to Antonio

Carlos Jobim. The Whale & Ale British Restaurant

and Pub, 327 W. 7th Street Downtown. 310-832-

0363, www.WhaleAndAle.com

Saturday, August 3

Peninsula Seniors' Coffee & Cars

7:30 a.m.

For all car hobbyists and enthusiasts. Hot rods,

custom, muscle and sports cars, antiques,

classics, exotics. Peninsula Shopping Center,

Hawthorne Blvd. and Silver Spur, Palos Verdes

Peninsula

1st Saturday Family Science/Storytime-White

Pt Nature Preserve

11 a.m.

Featuring the Cactus Wren with hands-on science

exploration and children's literature. White Point

Nature Reserve, 1600 W. Paseo del Mar,

Peninsula. 310-541-7613, www.PVPLC.org

Late Night Music

10 p.m.-1 a.m.

San Pedro Brewing Company, 331 W. 6th Street,

Downtown. 310-514-3416,

www.SanPedroBrewing.com

Sunday, August 4

PV Farmers Market

8 a.m.-1 p.m.

California farmers and food selections with sales

supporting the Palos Verdes Peninsula school

district. Peninsula High School, 27118 Silver Spur

Road, Rolling Hills Estates, Peninsula

Summer Whale Watch

9 a.m.

Head out to sea with naturalists to search for

some of the 2,000

whales that live

along the

California coast.

Voyages sails

aboard Spirit

Cruises, Dock 9,

429 Shoreline

Village Drive, Shoreline Village, Long Beach. 310-

548-7562, www.CabrilloMarineAquarium.org.

Reservations required. \$25/\$30

Music By the Sea

Noon-4:45 p.m.

Music festival featuring: Noon, Quintana; 1:45

p.m., In Contempt; 3:30 p.m.,

Down The Hatch

Pt. Fermin Park, 807 Paseo

del Mar, Peninsula. 323-335-

9226,

www.MusicByTheSea.rocks

Sexy Sunday Comedy

Show

7:30 p.m.

Longest running comedy

show in Los Angeles with

many comics from

throughout the area dropping in to perform.

Sacred Grounds Coffee House, 468 W. 6th Street,

Downtown. 310-514-0800. \$10

Wednesday, August 7

Wednesday Luncheon at the Los Angeles Yacht Club

Noon

A luncheon featuring a

nautically-related speaker.

Open to the public. Los

Angeles Yacht Club, 285

Whalers Walk, Cabrillo Marina.

310-831-1203, www.LAYC.org

\$20

Open Mic Night

6:30 p.m.

Musicians and other types of entertainment. Red

Men Wigwam Lodge, 543 Shepard Street,

Peninsula. www.SPWigWam.org

Thursday, August 8

Farmers Market

9 a.m.-2 p.m.

Providence Little Company of Mary Medical

Center, 1300 W. 7th Street, Above Gaffey

Heart of the Harbor Local Farmers Market

9 a.m.-1 p.m.

L Street between Avalon Blvd. and Marine Avenue,

Wilmington

Friday, August 9

Downtown Farmers Market

9 a.m.-2 p.m.

Farmers market held on 6th Street between

Pacific Avenue and Mesa Street Fruits,

vegetables, flowers, crafts, jewelry, art, food stalls

The Paul Gormley Trio

7 p.m.

World class musicians performing traditional jazz

with songs made popular from Sinatra to Antonio

Carlos Jobim. The Whale & Ale British Restaurant

and Pub, 327 W. 7th Street Downtown. 310-832-

0363, www.WhaleAndAle.com

Saturday, August 10

The Harbor Groove Band

8 p.m.-1 a.m.

Smooth sounds band that plays a variety of music

for dancing. Alpine Restaurant, Alpine Village, 833

W. Torrance Blvd., Torrance. 310-323-3954,

Facebook: @harborgrooveband

Late Night Music

10 p.m.-1 a.m.

San Pedro Brewing Company, 331 W. 6th Street,

Downtown. 310-514-3416,

www.SanPedroBrewing.com

Sunday, August 11

PV Farmers Market

8 a.m.-1 p.m.

California farmers and food

selections with sales

supporting the Palos Verdes

Peninsula school district.

Peninsula High School, 27118 Silver Spur Road,

Rolling Hills Estates, Peninsula

Family Science & Storytime

11 a.m.

Featuring the rattlesnake with hands-on science

exploration and children's literature. George F.

Canyon Nature Preserve, 27305 Palos Verdes

Drive E., Rolling Hills Estates, Peninsula. 310-541-

7613, www.PVPLC.org

The Flying Flea Puppet Circus

2 p.m.

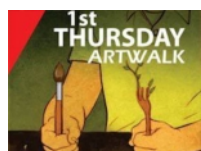
A puppet slam for kids of all ages. Puppetry

crafting and other shows and activities. Janny's

Showroom at People's Place, 365 W. 6th Street,

Downtown. 310-547-2348,

www.PeoplesPlaceSP.com



Wednesday, August 14

Wednesday Luncheon at the Los Angeles Yacht Club

Noon

A luncheon featuring a nautically-related speaker. Open to the public. Los Angeles Yacht Club, 285 Whalers Walk, Cabrillo Marina. 310-831-1203, www.LAYC.org \$20

Open Mic Night

6:30 p.m.

Musicians and other types of entertainment. Red Men Wigwam Lodge, 543 Shepard Street, Peninsula. www.SPWigWam.org

Thursday, August 15

Farmers Market

9 a.m.-2 p.m.

Providence Little Company of Mary Medical Center, 1300 W. 7th Street, Above Gaffey

Heart of the Harbor Local Farmers Market

9 a.m.-1 p.m.

L Street between Avalon Blvd. and Marine Avenue, Wilmington

Friday, August 16

Downtown Farmers Market

9 a.m.-2 p.m.

Farmers market held on 6th Street between Pacific Avenue and Mesa Street Fruits, vegetables, flowers, crafts, jewelry, art, food stalls

The Paul Gornley Trio

7 p.m.

World class musicians performing traditional jazz with songs made popular from Sinatra to Antonio

Carlos Jobim. The Whale & Ale British Restaurant and Pub, 327 W. 7th Street Downtown. 310-832-0363, www.WhaleAndAle.com

Henry V

8 p.m.

Grande finale. Shakespeare's most patriotic and inspiring play tells of a young King Henry V who seeks to unite his beloved England. Shakespeare by the Sea, Point Fermin Park, 807. W. Paseo del Mar, Peninsula.



www.ShakespeareByTheSea.org. Free

Saturday, August 17

Family Nature Walk

11 a.m.

Guided walk through the Tongva Demonstration Garden where you'll learn how early inhabitants used native plants for survival then through the restored coastal sage scrub habitat with views of Catalina. White Point Nature Preserve, 1600 W. Paseo del Mar, Peninsula. 310-541-7613, www.PVPLC.org

Experimental Artists of the South Bay

2-5 p.m.

Exhibition of a group of artists using innovative materials, methods, and techniques. The Loft, 401 S. Mesa Street, Downtown. 310-245-0517, www.CanneryRowStudios.com

Phineas Banning Birthday Celebration

5 p.m.

A fiesta with Mariachi and Folkloric dance, Mexican dinner. Or bring your own food and beverage have a picnic. The Banning Museum, 401 E. M Street, Wilmington. 310-548-2005,



www.TheBanningMuseum.org

19th Parkhurst Artists' Exhibition

5-8 p.m.

PARKHURST Galleries, Inc.

music, hors d'oeuvres, wine bar. Parkhurst Galleries, 439 W. 6th Street, Downtown. 310-547-3158, www.ParkhurstGalleries.com

Celebrate Non-Profits Sail

5-7:30 p.m.



www.LAMITopSail.org

Premiering a collection of original art from more than 30 local artists. Live

On board a tall ship sailing the Los Angeles Harbor area. Los Angeles Maritime Institute. Call for reservations and departure details at 310-833-6055,

Continued on page 8...

THE WHALE & ALE
SAN PEDRO'S BRITISH RESTAURANT & PUB

327 West 7th St., San Pedro 310 • 310 832 0363
www.WhaleAndAle.com

Free parking in rear • Open for lunch & dinner daily

Calendar of Events

San Pedro | Harbor | Peninsula | Catalina Island

...Continued from page 7

TANGOVINO! An Evening of Dance, Music, Food, Wine & Spirits

7 p.m.

Celebrating the first anniversary of the Pacific

Food & Beverage Museum with Argentinean food, spirit and wine tastings, and tango demonstrations and lessons. Deco Art Deco Penthouse Loft, 741 S. Pacific Avenue, Uptown Pacific Avenue. 657-2014-2478, www.NatFab.org. \$69/\$79

The Comedy of Errors

8 p.m.

Grand finale. A classic Shakespearean romp of mistaken identity—it's mischief and mayhem galore! Shakespeare by the Sea, Point Fermin Park, 807. W. Paseo del Mar, Peninsula. www.ShakespeareByTheSea.org. Free

Late Night Music

10 p.m.-1 a.m.

San Pedro Brewing Company, 331 W. 6th Street, Downtown. 310-514-3416, www.SanPedroBrewing.com

Sunday, August 18

PV Farmers Market

8 a.m.-1 p.m.

California farmers and food selections with sales supporting the Palos Verdes Peninsula school district. Peninsula High School, 27118 Silver Spur Road, Rolling Hills Estates, Peninsula

Sexy Sunday Comedy Show

7:30 p.m.

Longest running comedy show in Los Angeles with many comics from throughout the area dropping in to perform. Sacred Grounds Coffee House, 468 W. 6th Street, Downtown. 310-514-0800. \$10

Wednesday, August 21

Wednesday Luncheon at the Los Angeles Yacht Club

Noon

A luncheon featuring a nautically-related speaker.

Open to the public. Los Angeles Yacht Club, 285 Whalers Walk, Cabrillo Marina. 310-831-1203, www.LAYC.org \$20

Open Mic Night

6:30 p.m.

Musicians and other types of entertainment. Red Men Wigwam Lodge, 543 Shepard Street, Peninsula. www.SPWigWam.org

Thursday, August 22

Farmers Market

9 a.m.-2 p.m.

Providence Little Company of Mary Medical Center, 1300 W. 7th Street, Above Gaffey

Heart of the Harbor Local Farmers Market

9 a.m.-1 p.m.

L Street between Avalon Blvd. and Marine Avenue, Wilmington

The Lonesome West

8 p.m.

The play journeys to the west of Ireland where a vision of small-town despair, restlessness, and boredom inspire homicidal behavior. Two brothers squabble over the inheritance left by their recently deceased father. Also, there's a rumor about town that one of them may have murdered the father over a haircut-related insult. The local parish priest and a young girl from the community, also their bootleg whiskey supplier, make

futile attempts to keep the brothers from quarreling. Advisory: Graphic language, slurs, onstage violence, and dark themes. Little Fish Theatre, 777 S. Centre Street, Downtown. 310-512-6030, www.LittleFishTheatre.org \$28/\$26

Friday, August 23

Downtown Farmers Market

9 a.m.-2 p.m.

Farmers market held on 6th Street between Pacific Avenue and Mesa Street. Fruits, vegetables, flowers, crafts, jewelry, art, food stalls

The Paul Gormley Trio

7 p.m.

World class musicians performing traditional jazz with songs made popular from Sinatra to Antonio Carlos Jobim. The Whale & Ale British Restaurant and Pub, 327 W. 7th Street Downtown. 310-832-0363, www.WholeAndAle.com

The Lonesome West

8 p.m.

See description in August 22 listing. Little Fish Theatre, 777 S. Centre Street, Downtown. 310-512-6030, www.LittleFishTheatre.org \$28/\$26

Saturday, August 24

The Lonesome West

8 p.m.

See description in August 22 listing. Little Fish Theatre, 777 S. Centre Street, Downtown. 310-512-6030, www.LittleFishTheatre.org \$28/\$26

Fritz Coleman's One Night Comedy Show

8 p.m.

LA's favorite weatherman shares his hilarious take on growing up and growing older. Award-winning Trojan Men a cappella group opens. Benefiting Mary Star of the Sea High School expansion program. Warner Grand Theatre, 478 W. 6th



Catalina Island Museum

- Santa Catalina Island History
- Changing Special Exhibitions
- Events Offered Each Month
- Rental Space for Your Event
- Unique Catalina Island Gifts
- Free Admission for Kids



Hours: 10 am - 5 pm
(Closed New Year's Day, July 4th,
Thanksgiving & Christmas Day)
217 Metropole Ave
CatalinaMuseum.org



EXPERIENCE REAL LIVING HISTORY

Right on the LA Waterfront

SS LANE VICTORY

Three-War Veteran
of the United States Merchant Marine

Berth 49 at the end of Miner Street/Harbor Blvd.

www.LaneVictory.org

Open Daily

Street, Downtown. 310-547-1138,
www.MaryStarHigh.tix.com

Late Night Music

10 p.m.-1 a.m.

San Pedro Brewing Company, 331 W. 6th Street,
Downtown. 310-514-3416,
www.SanPedroBrewing.com

Sunday, August 25

PV Farmers Market

8 a.m.-1 p.m.

California farmers and food selections with sales
supporting the Palos Verdes Peninsula school
district. Peninsula High School, 27118 Silver Spur
Road, Rolling Hills Estates, Peninsula

Wednesday, August 28

Wednesday Luncheon at the Los Angeles Yacht Club

Noon

A luncheon featuring a nautically-related speaker.
Open to the public. Los Angeles Yacht Club, 285
Whalers Walk, Cabrillo Marina. 310-831-1203,
www.LAYC.org \$20

Open Mic Night

6:30 p.m.

Musicians and other types of entertainment. Red
Men Wigwam Lodge, 543 Shepard Street,
Peninsula. www.SPWigWam.org

Thursday, August 29-Monday,

September 2

Los Angeles Fleet Week

Times vary

Navy ship tours and special events.

www.LAFleetWeek.com

Thursday, August 29

Farmers Market

9 a.m.-2 p.m.

Providence Little Company of Mary Medical
Center, 1300 W. 7th Street, Above Gaffey

Heart of the Harbor Local Farmers Market

9 a.m.-1 p.m.

L Street between Avalon Blvd. and Marine Avenue,
Wilmington

Friday, August 30

Downtown Farmers Market

9 a.m.-2 p.m.

Farmers market held on 6th Street between
Pacific Avenue and Mesa Street Fruits,
vegetables, flowers, crafts, jewelry, art, food stalls

The Paul Gormley Trio

7 p.m.

World class musicians performing traditional jazz
with songs made popular from Sinatra to Antonio
Carlos Jobim. The Whale & Ale British Restaurant
and Pub, 327 W. 7th Street Downtown. 310-832-
0363, www.WhaleAndAle.com

TThe Lonesome West

8 p.m.

See description in August 22 listing. Little Fish
Theatre, 777 S. Centre Street, Downtown. 310-
512-6030, www.LittleFishTheatre.org \$28/\$26

Saturday, August 31

Markus Carlton jazz guitar

6:30 p.m.

New material, jazz and blues standards. The
Whale & Ale British Restaurant and Pub, 327 W.
7th Street Downtown. 310-832-0363,
www.WhaleAndAle.com

The Lonesome West

8 p.m.

The play journeys to the west of Ireland where a
vision of small-town despair, restlessness, and
boredom inspire homicidal behavior. Two brothers
squabble over the inheritance left by their recently
deceased father. Also, there's a rumor about town
that one of them may have murdered the father
over a haircut-related insult. The local parish priest
and a young girl from the community, also their
bootleg whiskey supplier, make futile attempts to
keep the brothers from quarreling. Advisory:
Graphic language, slurs, onstage violence, and
dark themes. Little Fish Theatre, 777 S. Centre
Street, Downtown. 310-512-6030,
www.LittleFishTheatre.org \$28/\$26

Late Night Music

10 p.m.-1 a.m.

San Pedro Brewing Company, 331 W. 6th Street,
Downtown. 310-514-3416,
www.SanPedroBrewing.com



at Fort MacArthur, Los Angeles Air Force Base

AVAILABLE FOR

Weddings | Corporate Events | & More!

Exclusive Use of Entire Facility.
Private & Secure Location at Fort MacArthur.

For more information, please contact:

Hayley Strozier 310.653.8341
Hayley.Strozier@us.af.mil

Patti Orbeck 310.653.8255
HarborviewCatering@gmail.com

Photos available at www.LAFSS.com/Harborview

Meetings Reunions Events

Call us for all the services you need

Visit



San Pedro, California

Meeting & Event
Services

310-729-9828

www.VisitSanPedro.org

Facebook:

MeetingsReunionsInSanPedroCalifornia

Get Specials, Offers, & Discounts Around the San Pedro and Peninsula Area

Because saving money is fun

Everybody likes to save money. And Visit San Pedro has made it easy for you to find the best deals around. Just go to www.VisitSanPedro.org and click on the box that says, Specials! Offers! Discounts! and you'll find the latest money-saving specials from the best stores and restaurants in the area.

- **The Original Las Brisas** Mexican restaurant, 1110 N. Gaffey, Northwest San Pedro, has introduced some great themed specials that include: What's Up Wednesdays, Food Happy Hour on Thursdays, Fish Friday, Shrimp Saturday, and Menudo Sunday. Get your coupons on www.VisitSanPedro.org.
- **The Whale & Ale British Restaurant & Pub**, 327 W. 7th Street, Downtown, has a great selection of lunch specials for just \$10 Tuesday through Fridays. The specials include fish and chips, bangers and mash, and other classic British pub items, and Sunday Lunch from 11:30 a.m. to 5 p.m. with Bottomless mimosas. You can add them to any entree for \$14.
- **Our Creations**, 416 W. 6th Street, Downtown, is offering 50% a big part of its inventory of art and craft supplies. You'll find the supplies you need to create beautiful things for weddings, birthdays, quinceañeras, and just about any other special occasion. Our Creations also offers a wide range of ready-made decorative items and artistic collectibles. It's got the largest selection of Dia de los Muertos statues and other items in the area.

Find your discounts at
www.VisitSanPedro.org

The Original Since 1982

Las Brisas

Mexican Food

A San Pedro Landmark for over 35 years!

310.833.4395

1110 N. Gaffey St. Suite D, San Pedro, CA 90731
OPEN: 7 days a week 10 am. to 11pm.

VISA MCDONALDS DISCOVER f yelp

Ms. Alexander
479 W. 6th St. #101 San Pedro, CA 90731

Carol Alexander
msalexander.net
b2h2251@gmail.com **310.953.6110**

ALICE RODRIGUEZ

SPV's Preferred REALTOR®



Relocating to Los Angeles?

15 Yrs. Experience:

- Sales
- Rentals
- Family Relocation

310-738-2511

arod@kw.com

www.arod.yourkwagent.com

Lic# 01362049



Keller Williams LA Harbor Realty
28901 S Western Ave., Ste. 139
Rancho Palos Verdes, CA 90275

Our Partner Schools

Alliance Alice M. Baxter High School

461 W. 9th Street, San Pedro
310-221-0430, www.BaxterHigh.org



Christ Lutheran School

28850 S. Western Avenue, Rancho Palos Verdes, Peninsula
310-831-0848, www.ChristRPV.com



Holy Trinity School & Preschool

1226 W. Santa Cruz Street, San Pedro
310-833-0703,
www.School.HolyTrinitySP.org



You Can Get Around San Pedro and the Peninsula With Transit Services

Public transit serves all attractions and will take you to LA

Find your way around San Pedro—and all of LA.

There are lots of ways to get around.

The Historic Downtown is within walking distance of the Waterfront or you can take the trolley on weekends.

The Downtown Trolley operates on weekends between the Cruise Terminal, 6th and 7th Streets, and Pacific Avenue, CRAFTED at the Port of Los Angeles, SS Lane Victory, and a stop at Battleship Iowa.

DASH buses operate on routes throughout the greater San Pedro area, south as far as 25th Street and west to Western Avenue.

Commuter Express line 142 has direct service to the Downtown Long Beach Transit Gallery where you can catch the Blue Line train that travels to downtown Los Angeles and connects to most rail lines that run throughout the greater Los Angeles area. Catch it at on the Waterfront or at stops along 7th Street and Gaffey Street north of 7th Street. (Note: the Blue Line is undergoing reconstruction and stops at the Rosa Parks Station. Buses are available to continue its route to Downtown Los Angeles.

Metro Transit buses operate several lines into, out of, and around San Pedro, mainly along 7th Street, Pacific Avenue, and Gaffey Street (although other streets are also served).

Connections to **Metrorail** are available from Downtown Los Angeles's Metro Center and some buses stop at rail stations along their routes.

The **Palos Verdes Transit Authority** provides bus services around the Palos Verdes Peninsula, to San Pedro, and as far north and west as Redondo Beach

Metro Bike Share

Offering bike rentals (with lots of free options). Eleven bike share stations in the Harbor area.

Lime Bikes and Electric Scooters

Look for the green bikes on many corners throughout San Pedro. Use your smart-phone to unlock the bike. First ride is free.

Your Information Resources for Getting Around San Pedro & LA
Transit information (bus, rail, and bike share)

323-466-3876, www.Metro.net

San Pedro DASH Bus route information

www.LADOTtransit.com/dash/routes/SanPedro/sanpedro.html

Commuter Express Route 142 to Long Beach information

www.LADOTtransit.com/comexp/routes/142/142.html

Palos Verdes Transit Authority information

www.PalosVerdes.com/pvtransit

Lime Bikes and Scooter information

www.LimeBike.com

Check for updated transit information and resources at

www.VisitSanPedro.org



Great Value Friendly People

www.vagabondinn.com

Vagabond Inn-San Pedro

Sheila Roark
Manager

215 S. Gaffey Street
San Pedro, CA 90731
toll free: 800-522-1555
Tel: 310-831-8911

Fax: 310-831-2649

vagabondinnsanpedro@yahoo.com
www.vagabondinn-san-pedro-california-hotel.com

Urban Feet
Shoes & Clothing



Skate
Equipment



Skateboards and
Accessories



Nike SB
Vans
Converse
Sanuk
Reef
Rainbow
Toms
Ugg
Dr. Martens
Redwing

329 W 6th Street

San Pedro CA 90731

310.832.9364

San Pedro Café's Menus Reflect the Town's Cultures

And offer lots of great choices for breakfast, lunch, & dinner



John Marovich was a college student working as a server at San Pedro Café when the boss broke the news: the restaurant was on the market. New owner, end of job, he thought. But then the owner gave Mr. Marovich the chance to acquire the restaurant himself. And the rest is not exactly history, but a great turn of events—both for him and those who love food.

San Pedro Café is located in Uptown Pacific Avenue, right at the top of Downtown, close to the Warner Grand Theatre and shopping. And it turns out meals every day that keep its diners coming back. Monday through Wednesday, it's breakfast and lunch. Thursday through Sunday, it's also dinner.

And, as with the huge San Pedro Café menu, it's hard to know where to start with this culinary powerhouse.

So, starting with breakfast, you'll find legendary waffles. Belgian waffles, of course. They have a great history in San Pedro, but San Pedro Café takes them further.

But it's more than waffles at San Pedro Café. The pancakes are highly recommended, as are the omelets.

Diners can get them with fresh fruit. Lots of fresh fruit. Bananas, blueberries, strawberries, apples. Or get one with blueberries baked right into the batter. In fact, you can make any breakfast a combo that includes two free-range extra-large eggs, two applewood smoked bacon slices, or two 100% pork loin sausage patty or ham.

Don't miss the French toast. It's made from brioche and you've got lots of choices as to how you'd like it prepared. Regular French toast, crunchy French toast that's rolled

in corn chips, with fresh fruit, or apple cinnamon. Or peanut butter crunch (which is squaw bread and honey-drizzled bananas and dusted with powdered sugar).

There's yet more the breakfast, including chicken fried steak, chilaquiles, benedicts, and many other selections. Not to forget good old "eggs and ..." lots of good sides. There's granola, too. Pretty much anything you want from breakfast, you'll find at San Pedro Café. Pleases the whole family.

And if you get the combo, you will certainly get a filling meal. They're huge. Even the regular orders are more than enough for most appetites.

Maybe you'd rather have lunch. San Pedro Café has the choices. Salads, sandwiches, entrees—and those great breakfast selections are all available.

Dinner is a relatively new thing for San Pedro Café, but it's showing how to do it right. The dinner menu reflects San Pedro's diverse culture. It's the one place you can regularly find Croatian-themed dishes, like the "Cro-Mo" (Croatian mostaccioli and sauerkraut) or the swordfish (a Croatian favorite). There are also many Mexican selections. Hamburgers that are grilled perfection. Speaking of which, the one word people say around town to describe how great San Pedro Café is: tri-tip.

Find out for yourself. Open for breakfast and lunch daily from 7 a.m. to 3 p.m. and dinner Thursday through Sunday from 5 to 9 p.m.

San Pedro Café, 605 S. Pacific Avenue, Uptown Pacific Avenue. 310-547-0961, www.WeLoveSPC.com. Online ordering available at www.OpenDining.net.

Sirens' Java & Tea Mural Unveiling Coming During this Month's Art Walk

A community mural project that culminates a six-week workshop will be unveiled Thursday, August 1 during the First Thursday Art Walk in Downtown San Pedro. The mural is on the side of Sirens' Java and Tea and is part of a project called, "Adventures in Public Art."

The six-week workshop gave participants a common foundation in elements of art, color theory, principles of design, analyzing art elements, and ultimately creating art that reflects complex ideas and expressive content.

Yolanda Regalado, owner of Sirens, which is still under construction in its new location at the northwest corner of 7th and Mesa Streets, met with the students to tell them her story and tour the 80-foot by 16-foot area that would be home to the mural.

There are 12 core class members who conceived of the design for the mural and worked on it, along with 25 community volunteers. The project was led by Community Art Machine on 6th Street and the San Pedro Waterfront Arts District. The unveiling will be part of the Art Walk tour led by Pat Carroll from the San Pedro Chamber of Commerce Board room at 390 W. 7th Street, Downtown, beginning at 6 p.m.



—Photo by Linda Grimes, San Pedro Waterfront Art District

| | |
|---|--|
|  <p>327 West 7th Street Downtown San Pedro <i>Award-winning dishes. Best in LA</i> <i>Best fish & chips, shepherd's pie, prime rib, and more</i> www.WholeAndAle.com 310 832 0363 Entertainment</p> |  <p>Dinner cruises, special event cruises Shoreline Village, Long Beach 310-548-8080, www.SpiritMarine.com</p> |
|  <p>Mediterranean Cuisine 309 W. 7th Street 424.342.9062</p> |  <p>Sea and Air Terminal Berth 95 San Pedro 310.707.2440 www.CatalinaBistro.com</p> |
|  <p>247 N. Gaffey St. 310-548-6964 <i>Featured on Food Network's</i> <i>Diners Drive-Ins, and Dives</i></p> |  <p>335 W. 7th Street, Downtown 424-342-9840 www.LaBuvetteBistro.com</p> |
|  <p>Cooking great since 1968! Enjoy Breakfast, Lunch and Dinner 7 days a week 511 S. Harbor Blvd. 310.832.1267 Get coupons at www.GrinderRestaurants.com</p> |  <p>SERVING WORLD FAMOUS CHILI DOGS, CORN DOGS, AND CHILI CHEESE FRIES 230 N. Gaffey Street, San Pedro, CA 90731 (310) 831-4486</p> |
|  <p>Sacred Grounds Great coffee • good vibes • sandwiches • salads • pastries 468 W 6th St, San Pedro <i>Next to the Warner Grand Theatre</i> (310) 514-0800</p> | <p>San Pedro Café <i>At the top of Historic Downtown</i> Sandwiches, salads, entrees, and all your favorites Breakfast served all day 605 S. Pacific Ave Ste 103 (310) 547-0961</p> |
| <p>JOLLY BURRITO 7am-9pm EVERY DAY Fresh & Authentic (310) 832-9196 726 S Pacific Avenue www.JollyBurrito.com</p> |  <p>Tanawin <i>Thai Bistro</i> In the Smart & Final shopping center 28368 S. Western Avenue, Rancho Palos Verdes 310-833-1010, www.TanaWinThai.com</p> |
|  <p>A Slice of Pedro <i>Family Owned & Operated</i> 347 W. 6th Street, Downtown 310-514-2500 www.PhilieBsOn6th.com</p> | <p>The Original Las Brisas <i>Since 1982 Great Mexican Food</i> 1110 North Gaffey Street, Suite D Northwest San Pedro 310-833-4395</p> |
|  <p>141 West 22nd St. On the marina 310-548-4400 www.22ndstLandingRestaurant.com <i>Voted South Bay's Favorite Seafood Restaurant 2016 — Daily Breeze</i></p> | <p>Raffaello Ristorante 400 S. Pacific Avenue (at 4th Street) (310) 514-0900 www.RaffaelloRistorante.com</p> |
|  <p>Warm, friendly neighborhood pub atmosphere. Award-winning food and beer 331 W. 6th St. (310) 831-5663 www.SanPedroBrewing.com</p> |  <p>Once you have it ... You'll love it! Breakfast Served All Day! 617 S Centre St, Downtown Happy Diner #2, 1931 N. Gaffey Street Happy Diner Deli 530 S. Gaffey Street 310-241-0917 www.HappyDinerSP.com</p> |
| <p>Babouch MOROCCAN RESTAURANT 810 S. Gaffey Street 310-831-0246 A dining experience Group parties, belly dancing. Happy Hour all night Tuesday</p> |  <p>376 W. 6th Street Downtown 424-264-5452, www.ConradsMexicanGrill.com</p> |

Insanocraft

Unique Lamps and Bar Carts of Distinction




Instagram-Insanocraftmp

Mike Piper Owner/Designer

Text 310 514-1461

banter & bliss
CANDLE CO

hello@banterandbliss.com www.banterandbliss.com

   /banterandbliss

Beadwork by cgm

Jewelry • Crosses • Miniature Trees

◆ Carmen Guevara Moen ◆
Artist

cdmoen@sbcglobal.net • (310) 833-8345
beadworkbycgmjewelryla.com

CURIOSITY

CURIOSITY MAKES

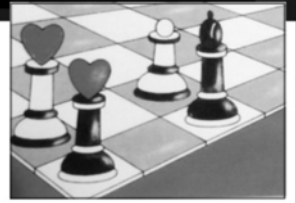
Art, Illustrations
and Photography
Jewelry and Accessories
Necklaces and Keychains
Stationery and Paper Goods

eigold7@att.net • (323) 640-8186

Space #148

INSTAGRAM www.instagram.com/eileen_golden

PROPRIETORS Eileen Golden & Anthony Simpson



HARE & TROVE CO.

CURIOUS GOODS AND BESPOKE GIFTS

EMAIL: hello@hareandtrove.com

WEB: www.hareandtrove.com

LOS ANGELES, CALIF



Urban Artisan

Picture Framer Extraordinaire
Expert in Design
By Appointment

or at Crafted space 133

Steve Magee

310-400-9659 voice/text
mageeframing@gmail.com



Buy Direct
From
Local Artists
and Save!

Come shop the huge selection of handmade arts and crafts
at the San Pedro Art Association booths at
Crafted at the Port of Los Angeles
112 E. 22nd St in San Pedro

Open Friday-Saturday-Sunday 11am to 7pm

Free Admission and Parking

Mention this ad and receive five dollars off a purchase
of twenty-five dollars or more from an individual artist.
(Not valid on sale or discounted items)

For more information call or text 310-400-9659; visit sanpedroart.org
or our Facebook pages (search San Pedro Art Association)

The Directory

Where to **Dine**, **Shop**, **Experience**, **Enjoy**

San Pedro | Harbor | Peninsula | Catalina Island

Art/Galleries/Museums

It's Showtime Art Deco and more, 741 S. Pacific Avenue, Uptown 310-351-0070, www.DecoArtDeco.com

The Banning Museum, 401 E. M Street, Wilmington 310-548-2005, www.TheBanningMuseum.org

Cabrillo Marine Aquarium, 3720 Stephen M. White Drive, Cabrillo Beach 310-548-7562, www.CabrilloMarineAquarium.org

Catalina Island Museum 217 Metropole Avenue, Avalon, Catalina Island. 310-510-2414, www.CatalinaMuseum.org

Gil Mares Photography fine art photography, 310-902-0682, www.GilMares-Photography.com

Little Fish Theatre, 777 Centre Street, Downtown. 310-512-6030, www.LittleFishTheatre.org

SS Lane Victory, Berth 49, 3600 Miner Street, Waterfront. 310-519-9545, www.TheLaneVictory.org

Our Creations décor, crafts, & supplies, wedding, party 416 West 6th Street, Downtown 310-519-8231

Parkhurst Galleries, 439 W. 6th Street, Downtown, 310-547-3158, www.ParkhurstGalleries.com

San Pedro Arts Association at CRAFTED, 112 E. 22nd Street, Waterfront 310-831-2928, www.SanPedroArt.org

San Pedro City Ballet, 1231 S. Pacific Avenue, San Pedro 310-732-1861, www.SanPedroBalletSchool.com

Warner Grand Theatre, 478 W. 6th Street, Downtown 310-548-7672, www.WarnerGrand.org

Food/Dining/Nightlife

Whale & Ale British Restaurant & Pub, 327 W. 7th Street, Downtown 310-832-0363 www.WholeAndAle.com

Catalina Bistro & Express Grill, Catalina Express Sea & Air Terminal, Berth 95 (at Swinford and Harbor Blvd.), San Pedro Waterfront 310-707-2440, www.CatalinaBistro.com

Babouch Moroccan Restaurant & Lounge, 810 S. Gaffey Street, San Pedro. 310-831-0246

22nd Street Landing Seafood Grill and Bar, 141-A W. 22nd Street, Cabrillo Marina, San Pedro Waterfront 310-548-4400, www.22ndStreetRestaurant.com

Gaffey Street Diner, 247 N. Gaffey Street 310-548-6964

Godmothers Saloon, 302 W. 7th Street, Downtown 310-833-1589

Grinder, 511 S. Harbor Blvd. on the San Pedro Waterfront. 310-832-1267, www.GrinderRestaurants.com

Happy Diner American diner and Mexican, 617 S. Centre Street, Downtown 310-833-6799, www.HappyDinerSP.com

Happy Diner #2, 1931 N. Gaffey Street, NW San Pedro

Happy Deli, 530 S. Gaffey Street, Downtown

The Original Las Brisas, 1110 N. Gaffey Street, Suite D., NW San Pedro 310-833-4395, www.TheOriginalLasBrisas.com

Jolly Burrito Grill, 726 S. Pacific Avenue, Uptown 760-694-6888, www.JollyBurrito.com

La Buvette Wine Bistro, 335 W. 7th Street, Downtown 424-342-9840

Philie B's pizza, subs, pasta, 347 W. 6th Street, Downtown 310-514-2500, www.PhillieBs.com

Raffaello Ristorante, 400 S. Pacific Avenue, Uptown 310-514-0900, www.RaffaelloRistorante.com

Sacred Grounds coffee house, salads, sandwiches, 468 W. 6th Street, Downtown 310-514-0080

San Pedro Brewing Company, 331 W. 6th Street, Downtown 310-831-5663, www.SanPedroBrewing.com

San Pedro Café, 605 S. Pacific Avenue Suite 103, Downtown 310-547-0961, www.SPCafelnc.com

Sebastian's Mediterranean Cuisine, 309 W. 7th Street, Downtown. 424-342-9062

Terranea Resort eight dining venues, 100 Terranea Way, Rancho Palos Verdes 866-802-8000, www.Terranea.com

Maritime/Boating

Spirit Cruises, Shoreline Village, Long Beach 310-548-8080, www.SpiritMarine.com

Los Angeles Yacht Club, 285 Whalers Walk, Cabrillo Marina 310-831-1203, www.LAYC.org

Buccaneer Yacht Club, 241 Watchorn Walk, Berth 34, Holiday Harbor Marina. 310-413-8238, www.BUCYC.org

Cabrillo Way Marina, 2293 Miner Street, Cabrillo Way Marina 310-514-4985, www.CabrilloWay.com

Los Angeles Maritime Institute—Official LA Tall Ships, Berth 73, Suite 2, San Pedro Waterfront 310-833-6055, www.LAMITopSail.org

Motor Yacht Mauretania 310-833-9955, www.MotorYachtMauretania.com

Los Angeles Harbor Boat Show www.SoCalBoatShow.com

Recommended Hotels

Best Western Plus San Pedro Hotel & Suites, 111 S. Gaffey Street, Above Gaffey 310-514-1414

Terranea Resort, 100 Terranea Way, Rancho Palos Verdes 866-802-8000, www.Terranea.com

Vagabond Inn, 215 S. Gaffey Street. 310-831-8911, www.VagabondInn.com/Vagabond-Inn-San-Pedro

DoubleTree by Hilton, 2800 Via Cabrillo Marina San Pedro Waterfront 310-514-3344

Real Estate

Alice Rodriguez Realtor, Keller Williams, 28901 S. Western Avenue, Suite 101, Rancho Palos Verdes, Peninsula. 310-738-2511. Mobile 310-738-2511, www.kw.com/kw/agent/arod

Shopping & Services

It's Showtime, Art Deco and more, 741 S. Pacific Avenue, Uptown 310-351-0070, www.DecoArtDeco.com

Badfish Clothing Co., 337 W. 6th Street, Downtown 310-521-9965, www.BadFishClothing.com

Bringelson Jewelers, 461 W. 6th Street, Downtown. 310-832-5482, www.FaceBook.com/BringelsonJewelers

Ms. Alexander women's fashions, 479 W. 6th Street, Downtown 310-953-6110, www.MsAlexander.net

Our Creations décor, crafts, & supplies, wedding, party 416 W. 6th Street, Downtown 310-519-8231

Rok 'n' Ell Baby Boutique & More, 1438 W 8th Street, Weymouth Corner 310-832-4145, www.RoknEllBaby.com

Urban Feet, 329 W. 6th Street, Downtown 310-832-9364

Health, Fitness, & Recreation

Spirit Cruises, Shoreline Village, Long Beach 310-548-8080, www.SpiritMarine.com
Catalina Express, Berth 95, San Pedro Waterfront; Catalina Landing, Long Beach 800-481-3470, www.CatalinaExpress.com

All Fit conditioning, nutrition, mindfulness, 279 W. 7th Street, Downtown. 310-424-287-0432, www.AllFitGroup.com

Belmont Shore Railroad Club, 3601 S. Gaffey Street, Peninsula 310-831-6262, www.BelmontShoreRR.com

Dr. Ja'nae Brown, PT, DPT physical therapy 310-548-5984, www.DRJanaeBrownPT.com

Lanta Salon, 300 E. 4th Street, Suite A111, Long Beach 310-521-0828, www.LantaSalon.net

Our Community

The Canterbury, 5801 Crestridge Road, Rancho Palos Verdes, Peninsula. 877-318-1795, www.TheCanterbury.org

Alliance Alice M. Baxter High School, 461 W. 9th Street, San Pedro 310-221-0430, www.BaxterHigh.org

Christ Lutheran School, 28850 S. Western Avenue, Rancho Palos Verdes, Peninsula 310-831-0848, www.ChristRPV.com

Community Christian Church, 1903 W. Summerland Drive, Rancho Palos Verdes. 318-832-7304, www.CCCRPV.org

The Garden Church, 429 W. 6th Street, Downtown, www.GardenChurchSP.org

Holy Trinity School & Preschool, 1226 W. Santa Cruz Street, San Pedro 310-833-0703, www.SchoolHolyTrinitySP.org

Marine Mammal Care Center, 3601 S. Gaffey Street, Peninsula. 310-548-5677, www.MarineMammalCare.org

Marymount California University, 30800 Palos Verdes Drive East Rancho Palos Verdes 310-377-5501, www.MarymountCalifornia.edu

Ministerios Torrente De Besor 1491 W. O'Farrell Street, San Pedro. 310-350-901-5490

San Pedro United Methodist Church, 580 W 6th Street. 310-548-1001, www.SanPedroUMC.org

Random Lengths News, 1300 S. Pacific Avenue 310- 519-1016, www.RandomLengthsNews.com

San Pedro Chamber of Commerce, 390 West 7th Street, Downtown 310-832-7272, www.SanPedroChamber.com

Temple Heights Southern Baptist Church, 888 W. Hamilton Avenue, San Pedro 310-831-5446,

The Topaz Building, 222 W. 6th Street, Downtown 310-514-2400, www.TopazSanPedro.com

The Vue Apartments, 255 W. 5th Street, Downtown 866-585-1972, hwww.CarmelApartments.com/the-vue-san-pedro-ca



The Harbor Area's Independent Newspaper

Where to dine, what to do!

RandomLengthsNews.com

Waterfront Wow!

Cruise the Dynamic Long Beach Harbor

3 YACHTS AT YOUR SERVICE

PUBLIC DINNER CRUISES • PRIVATE CHARTERS

WHALE WATCHING • HARBOR TOURS

AWARD-WINNING ALL-INCLUSIVE PACKAGES

CORPORATE EVENTS • BIRTHDAYS

CELEBRATIONS OF LIFE

QUINCEAÑERAS • WEDDINGS

WE DO IT ALL!



SINCE 1984, WE HAVE PROVIDED THE PERFECT EXCURSION FOR MANY OCCASIONS. WE CAN ACCOMMODATE 20-140 GUESTS FOR YOUR NEXT REMARKABLE GATHERING.

PERHAPS THE BEST DESTINATION FOR YOUR NEXT OCCASION IS WITH SPIRIT!



310-548-8080

spiritmarine.com

429 Shoreline Village Drive, Dock 9
Long Beach, CA • 90802