

San Pedro & Peninsula

Visitor

October 2018

What to See & Do ★ Where to Dine

San Pedro International Film Festival

October Calendar of Events

San Pedro | Harbor | Peninsula | Catalina

All About October

Inside

4 A Tale of San Pedro Deadman's Island

6 October Calendar of Events

13 Dining Guide

14 The Directory to the Best of San Pedro

San Pedro & Peninsula Visitor is published by Visit San Pedro, the independent tourism authority serving San Pedro, the Los Angeles Harbor and Palos Verdes Peninsula communities, and Catalina Island. Visit San

Pedro is a division of the Southern California Education, Tourism, and Cultural Organization
Volume 4, Number 11, October 2018

Visit San Pedro

225 W. 6th Street
San Pedro, CA 90731
310-729-9828 www.SanPedroTourist.net

Admiral Sponsors

Spirit Cruises
It's Showtime
The Deco Art Deco Building



On the Cover—The super moon over the Catalina Channel, looking out from the Palos Verdes Peninsula amidst the limbs just screams “Halloween.” Photo by Terry duSoleil.

The Arts

The first Thursday is a great start for a month of arts activities and events. That's when Downtown San Pedro hosts its monthly Art Walk. Galleries and studios are open, there's entertainment, and restaurants offer specials. It begins around 6 p.m. and is in the area between 4th and 9th Streets and Palos Verdes Street and Pacific Avenue. Free tour from the San Pedro Chamber of Commerce, 390 W. 7th Street. Start your evening at the San Pedro Visitor Center, 225 W. 6th Street, Downtown. And be sure to visit the San Pedro Art Association for its monthly celebration on First Thursday. That's at the Crowne Plaza Los Angeles Harbor Hotel, 601 S. Palos Verdes Street.
www.1stThursday.com

Palos Verdes Performing Arts offers an array of arts events every month, including many touring shows. Stage shows, classical and popular music. Just about whatever you want. It's located conveniently at 27570 Norris Center Drive in Rolling Hills Estates. 310-544-0403, www.PalosVerdesPerformingArts.com.

Discover This Month

7th Annual San Pedro International Film Festival

SPIFFest is San Pedro's premier film festival. And it's more than the usual film festival. It's a place where a wide range of perspectives challenge audiences to see the world in new ways. Things kick off during the Downtown First Thursday Art Walk. Drop by the Festival Lounge and Box Office at 430 W. 6th Street. (Get a VIP pass!) There's a big red carpet opening night on Friday. Things wrap up on Sunday with the anniversary screening of *It's A Mad Mad Mad Mad World*. In between there are showings, panels, and more at the Warner Grand Theatre and Cabrillo Marine Aquarium. See the schedule on page 5.

www.SPIFFest.org

Nightlife

Jazz, jazz, and more jazz at **The Whale & Ale**, 327 W. 7th Street. On Friday nights you can hear The Paul Gormley Trio, a world-class group of musicians who play traditional jazz that you'll love. And on Saturday nights, Markus Carlton plays beautiful jazz guitar in the pub.
www.WholeAndAle.com.

There's music six nights a week at **The Admiral Risty** on the beautiful Palos Verdes Peninsula with some of the area's favorite musicians. Award-winning cuisine and wine list. In the relaxed Seaside Lounge. The Admiral Risty is located at 31250 Palos Verdes Drive West, Peninsula. 310-377-0050,
www.AdmiralRisty.com.

If you want a real San Pedro experience, definitely make it a point to visit **Godmother's Saloon** at 301 W. 7th Street, on the corner of Centre Street, Downtown. Music many nights. Nice people and fun times every day and night.

There's late night music at **San Pedro Brewing Company** every Friday and Saturday. Sometimes a live local band and sometimes a hot DJ. And always some of the best beers and really great food and service. It's at 331 W. 6th Street, Downtown. Call 310-831-5663 or visit www.SanPedroBrewing.com

Dining

Rise & Shine (or breakfast all day)

San Pedro Cafe at 605 S. Pacific Avenue, is well-known (and well-loved). Big portions expertly prepared. Always cage-free eggs and other fresh ingredients. It's right in the middle of Uptown Pacific Avenue and it's well worth a visit.

Gaffey Street Diner at 247 N. Gaffey Street is right off the freeway and easy to get to. You can count on longshoreman-size portions, fresh ingredients, and the long-time menu favorites—just with some additional enticements and a renewed commitment to great customer service.

The Grinder has been a tradition for 40 years—and it just keeps getting better. Great breakfasts, lunch, dinner. Right on the Waterfront at 511 S. Harbor Blvd. Check its website at www.GrinderRestaurants.com for coupons.

It's not possible to find a better breakfast served all day than at both **Happy Diner** locations. They've got all your favorite traditional choices and Mexican specialties, too. Everything is prepared with care and love at this family-owned business. Happy Diner, 617 S. Centre Street, Downtown; Happy Diner 2, 1931 N. Gaffey Street, NW San Pedro.
www.HappyDinerSP.com.

Deadmen Tell No Tales?

They do on this island

A name like **Deadman's Island** evokes at least a couple of images. For one there's the theatrical/ fanciful/ cartoon/ amusement park kind of pirate lair. But for another, there's the historical chance that

source), "Isla del Muerto" or "Isla de los Muertos." It was later translated to the English Deadman's Island.

In his book, *Two Years Before the Mast* published in 1840, Richard Henry Dana wrote about visiting Deadman's Island in San Pedro Bay in 1835 and mentions the burial there of a British whaling captain, whose cause of death was unknown.

The logs of Capt. Augustus Timms, founder of the harbor at San Pedro, also mention that a British mariner's body was taken off his ship and

buried. But there is no word about how he died.

It was in 1901, though, when four local boys—identified by the *Los Angeles Times* as Mark and Howard Kelsey, Chester Silent, and Roy Bancroft—found the mariner's coffin and bones. They were fishing when the exposed bones caught their attention.

The exposure of the bones was a long time coming and had been the cause of discussion for quite some time.

Over the years the ocean's waves had worn away at the island's rock and soil, exposing at least one major hole that continued to be enlarged by nature's forces, eventually resulting in the coffin and bones coming to the surface.

Continued on page 4



DEADMAN'S ISLAND IN IMAGES—As islands go, Deadman's Island wasn't very big. But what a history it had. The image at left shows the island in 1873 before it was excavated (blown up, if you will and shown on page 4) to make navigation into the growing harbor at San Pedro a little less treacherous. (Photo courtesy of Water & Power Associates) And the photo below shows the bones of three of the 1849 casualties from the USS *Savannah* after they became exposed from the elements. They, along with another set of bones from that time, were reinterred at the Presidio in San Francisco. (Photo courtesy of California State University, Dominguez Hills Archives)

the name developed from its very real inhabitants.

There was a Deadman's Island at the entrance to the harbor at San Pedro—well before it was Los Angeles Harbor. For decades it was a landmark for mariners. But it didn't have a name until about 1810 when a body was found on it. The body belonged to someone who apparently had made his way to the island, but was unable to get across the wide channel to the mainland, and who probably died from exhaustion, exposure, thirst, or all of the above.

The body was discovered by local fishermen, who buried him atop the island and from that day forward named the site was known as (depending on the



Updated visitor information at www.SanPedroTourist.net

...Deadman's Island Reveals Its Tales

...Continued from page 3

The boys said the coffin was in good shape, although its boards had fallen apart. And the bones did not scatter much from the coffin.

A rope was found between the deceased's head and ribs and was apparently fashioned as a hangman's noose. None of the long-time local residents could recall the victim of a hanging being buried on the island, and the cause of death of the ship's captain had been a mystery for a century. It was inferred from the evidence that the bones were those of the captain of the British whaling brig, that the ship's crew had hanged the captain during a mutiny, and that the sailors had buried his body on the island.

The overthrown captain was not, however, the only dead man on the island.

On October 7, 1846, the frigate USS Savannah arrived after helping to secure northern California for the U.S. It came to San Pedro to try to recapture the pueblo of Los Angeles, which had been taken over by the Californios.

The first casualty from the Savannah was William Smith who died from the accidental discharge of a pistol soon after the ship arrived.

An expedition would set out for the pueblo and would encounter an opposition force on the Dominguez Rancho, about 10 miles north of San Pedro. This battle, called either the Battle of Dominguez Rancho or the Battle of Old Woman's Gun, would result in five more deaths.

These deaths came about from a cannon named "Old Woman's Gun" that the local

forces fired several times. It was a very small gun, as cannons go, and had been a decoration in the garden of Dominguez family daughter-in-law Inocencia Reyes. It was retrieved and mounted for battle. The first shot was reported to be ineffective because of faulty, locally produced, gun powder. But several subsequent shots hit their marks.

At the end, on October 9, the bodies of Michael Hoy, David Johnson, Charles Somers, and William B. Berry, were interred on Deadman's Island. On October 22, the body of Marine Henry Lewis was also buried there.

Perhaps ironically or perhaps fittingly, the cannon that killed the five men was brought to Deadman's Island on July 4, 1853 to fire a salute on Independence Day.

Finally by 1928, as traffic in the harbor increased and the government decided various other enhancements to the facilities were needed, Deadman's Island became an impediment. It was a navigation hazard and, although it had at a couple of times in its history served as a whaling station, the rock itself served no real purpose.

It took the power of eight dredging barges, a steam shovel, and 20 train cars of dynamite and blasting powder to level the island. Its 2.3 million cubic yards of rock and dirt were used to construct a customs house, Coast Guard station, and prison on the adjacent end of Rattlesnake Island, by then renamed Terminal Island. The new land created in part from Deadman's Island is called Reservation Point.

Head down to the south end of the harbor and look to the east. You're likely to see one or more Coast Guard vessels there. They're at Coast Guard Base Los Angeles/Long Beach made in part from the rocks of Deadman's Island. And perhaps on a particularly dark and maybe foggy night, you just might see a ghost or two of the dead men of Deadman's Island.



Serving The Harbor Area Since 1923 facebook.com/BringelsonJewelers

BRINGELSON JEWELERS

Business Hours
Tuesday - Friday
 10:00 to 5:30pm
Saturday
 10:00 to 5:00pm
Sunday & Monday Closed

Marta Valladolid
 310-832-5482
 461 W. 6th St. Ste. 104
 San Pedro, CA 90731

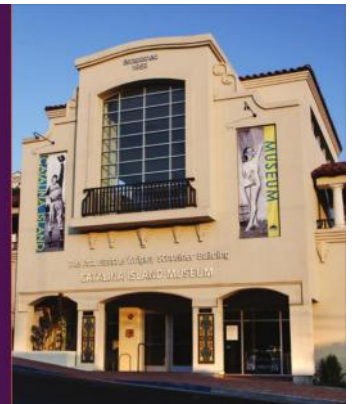
Located In Brown Bros. Walkway
 Family Owned & Operated
bringelson1923@sbcglobal.net

Catalina Island Museum

- Santa Catalina Island History
- Changing Special Exhibitions
- Events Offered Each Month
- Rental Space for Your Event
- Unique Catalina Island Gifts
- Free Admission for Kids



Hours: 10 am - 5 pm
 (Closed New Year's Day, July 4th,
 Thanksgiving & Christmas Day)
 217 Metropole Ave
CatalinaMuseum.org



Bringelson Jewelers Celebrating 95th Anniversary

Bringelson Jewelers will celebrate its 95th anniversary in business on Thursday, October 4 from 5 to 9 p.m.

Since it opened in 1923, Bringelson Jewelers has been a favorite in the San Pedro community

Today it remains locally-owned, now by Marta Valladolid, and continues with its

long tradition of outstanding service and the highest quality merchandise.

The 95th anniversary celebration will take place in conjunction with Downtown San Pedro's First Thursday Art Walk. And there will be Champagne and hors d'oeuvres.

And if you haven't discovered Bringelsons yet, you'll find out why it's the jewelry

store that's been in business longer than any other in the South Bay region.

The store has a great selection of all the popular types of jewelry that people want, including the best selection of engagement and wedding rings in the area. It also offers jewelry repair, pearl restringing, custom orders, and watch and clock repair, as well as vintage watch restoration.

With those kinds of services, an old item can become a collectible and even an investment.

Bringelsons is also known for fair prices.

So there's no better time to discover this old favorite than on its 95th birthday.

Bringelson Jewelers

461 W. 6th Street, Suite 104, Downtown
310-832-5482, m.me/BringelsonJewelers

Shortest Run to Catalina

SERVICES & AMENITIES

- 698 slips from 28' to 130'
- 375 dry storage spaces up to 45' with crane launching
- Ample courtesy parking
- Water & electricity
- Restrooms with showers
- Ice machines & laundry
- Pumpout—public and slip-in

Providing clean facilities to the boating community and protecting our waterways from pollution



Office Open 7 Days

Marina: (310) 514-4985 • Dry Storage (310) 521-0200



cabrillowaymarina@westrec.com
www.cabrilloway-marina.com
2293 Miner St., San Pedro



The 2018 San Pedro International Film Festival Schedule

The VIP pass gives you access to every event during the festival. Early bird pricing available up to October 4

Thursday, October 4

5-9 p.m. First Thursday Art Walk

@ Festival Lounge & Box Office 430 Sixth Street, San Pedro

Friday, October 5

6 p.m. Red Carpet • Warner Grand Theatre

7 p.m. Opening Night Film: Chimera 9:00p.m. Short Takes 01

Saturday, October 6

11a.m. Brunch • Filmmakers Lounge

Noon Panel: Film Business Panel • Filmmakers Lounge

12:30 p.m. Doco Shorts 02 • Cabrillo Marine Aquarium

1 p.m. Short Takes 02 • Warner Grand Theatre

2:30 p.m. Documentary Feature Film – Stroop: Rhino War • Cabrillo Marine Aquarium

3 p.m. Doco Shorts 01 • Warner Grand Theatre

4 p.m. VR Panel • Filmmakers Lounge

5 p.m. Feature Film – Finding Sarah • Warner Grand Theatre

7 p.m. Short Takes 03 • Warner Grand Theatre

9 p.m. Feature Film – The Divide • Warner Grand Theatre

Sunday, October 7

12:30 p.m. Doco Shorts 03

2 p.m. Closing Party

3 p.m. Short Takes 04 • Warner Grand Theatre

5 p.m. Closing Night Feature It's A Mad Mad Mad Mad World

Full schedule and ticket information available at www.SPIFFest.org

Calendar of Events

San Pedro | Harbor | Peninsula | Catalina Island

Tuesday, October 2

Dan O'Sullivan

6-10 p.m.

Performing in the Seaside Lounge. The Admiral Risty Restaurant, 31250 Palos Verdes Drive West, Peninsula. 310-377-0050, www.AdmiralRisty.com

Wednesday, October 3

Wednesday Luncheon at the Los Angeles Yacht Club

Noon

A luncheon featuring a nautically-related speaker. Open to the public. Los Angeles Yacht Club, 285 Whalers Walk, Cabrillo Marina. 310-831-1203, www.LAYC.org \$20

Scott Grillo

6-10 p.m.

Performing in the Seaside Lounge. The Admiral Risty Restaurant, 31250 Palos Verdes Drive West, Peninsula. 310-377-0050, www.AdmiralRisty.com

Open Mic Night

6:30 p.m.

Musicians and other types of entertainment. Red Men Wigwam Lodge, 543 Shepard Street, Peninsula. www.SPWigWam.org

Thursday, October 4-Sunday, October 7

7th Annual San Pedro International Film Festival

Times vary

A film festival celebrating the diverse culture and community of San Pedro with a wide spectrum of independent film, documentaries, and shorts. SPIFF exhibits films that embody inspiring entertainment for all, works that express fresh voices and differing global perspectives, with the intent that these films enlighten audiences while providing invaluable exposure for filmmakers, local and international. Warner Grand Theatre, 478 W. 6th Street, Downtown. www.SPIFFest.org

Thursday, October 4-Sunday, December 16

National Watercolor Society 98th International Open Exhibition

Thursday & Friday 10 a.m.-2 p.m.; Saturday & Sunday 12-4 p.m. or by appointment

One of two annual exhibitions showcasing the very finest in watercolor art. The National Watercolor Society Gallery, 915 S. Pacific Avenue, Uptown. 310-831-1099, www.NationalWatercolorSociety.org

Thursday, October 4-Sunday, October 7

Buccaneer's Weekend 2018

DJs by day, live bands by night, costume contests, treasure hunts. Two Harbors, Catalina Island. 310-510-4249, www.Facebook.com/BuccaneerDays

Thursday, October 4

Farmers Market

9 a.m.-2 p.m.

Providence Little Company of Mary Medical Center, 1300 W. 7th Street, Above Gaffey

Heart of the Harbor Local Harvest Local

Farmers Market

9 a.m.-1 p.m.

L Street between Avalon Blvd. and Marine Avenue,

Wilmington

First Thursday Art Walk

6 p.m.

San Pedro's arts night out. Galleries and studios are open, restaurants have specials and entertainment. Between 4th and 9th Streets and Palos Verdes Street and Pacific Avenue. Music at the corner of 6th/Mesa Streets. Free guided art walk tour beginning at the San Pedro Chamber of Commerce, 390 W. 7th Street. Begin your evening at the San Pedro Visitor Center, 225 W. 6th Street. www.1stThursday.com

Charles Lamont

6-10 p.m.

Performing in the Seaside Lounge. The Admiral Risty Restaurant, 31250 Palos Verdes Drive West, Peninsula. 310-377-0050, www.AdmiralRisty.com

The New Whalers

7 p.m.

Five-piece swinging New Orleans jazz band. The Whale & Ale British Restaurant and Pub, 327 W. 7th Street Downtown. 310-832-0363, www.WholeAndAle.com

Friday, October 5

Downtown Farmers Market

9 a.m.-2 p.m.

Farmers market held on 6th Street between Pacific Avenue and Mesa Street Fruits, vegetables, flowers, crafts, jewelry, art, food stalls

Tom Bellizia

6-10 p.m.

Performing in the Seaside Lounge. The Admiral Risty Restaurant, 31250 Palos Verdes Drive

The Paul Gornley Trio

7 p.m.

World class musicians performing traditional jazz with songs made popular from Sinatra to Antonio Carlos Jobim. The Whale & Ale British Restaurant and Pub, 327 W. 7th Street Downtown. 310-832-0363, www.WholeAndAle.com

Fortnight Concert Series

7:30 p.m.

Fred Schreuders' Trio holds down the fort with his jazz guitar and storytelling. Held in the intimate space through the tunnels of historic Leary Gun Battery of the former Ft. MacArthur. Angels Gate Cultural Center, 3601 S. Gaffey Street, Peninsula. www.AngelsGateArt.org

Late Night Music

10 p.m.-1 a.m.

San Pedro Brewing Company, 331 W. 6th Street, Downtown. 310-514-3416, www.SanPedroBrewing.com

Saturday, October 6

Peninsula Seniors' Coffee & Cars

7:30 a.m.

For all car hobbyists and enthusiasts. Hot rods, custom, muscle and sports cars, antiques, classics, exotics. Peninsula Shopping Center, Hawthorne Blvd. and Silver Spur, Palos Verdes Peninsula

PV Farmers Market

8 a.m.-1 p.m.

California farmers and food selections with sales

supporting the Palos Verdes Peninsula school district. Peninsula High School, 27118 Silver Spur Road, Rolling Hills Estates, Peninsula

Markus Carlton jazz guitar

6:30 p.m.

New material, jazz and blues standards. The Whale & Ale British Restaurant and Pub, 327 W. 7th Street Downtown. 310-832-0363, www.WholeAndAle.com

Charles Lamont

7-11 p.m.

Performing in the Seaside Lounge. The Admiral Risty Restaurant, 31250 Palos Verdes Drive West, Peninsula. 310-377-0050, www.AdmiralRisty.com

Late Night Music

10 p.m.-1 a.m.

San Pedro Brewing Company, 331 W. 6th Street, Downtown. 310-514-3416, www.SanPedroBrewing.com

Sunday, October 7

Ezzi/Jazz & Friends

4 p.m.

Ezzi/Jazz brings their unique brand of entertainment along with a cavalcade of their many friends. The Whale & Ale British Restaurant and Pub, 327 W. 7th Street Downtown. 310-832-0363, www.WholeAndAle.com

It's A Mad Mad Mad Mad World-55th Anniversary Screening

5 p.m.

Screening of Stanley Kramer's 1963 comedy classic. Culminating the San Pedro International Film Festival. Warner Grand Theatre, 478 W. 6th Street, Downtown. www.WarnerGrand.org. www.SPIFFest.org

Richard Leach

5-9 p.m.

Performing in the Seaside Lounge. The Admiral Risty Restaurant, 31250 Palos Verdes Drive West, Peninsula. 310-377-0050, www.AdmiralRisty.com

Tuesday, October 9

Dan O'Sullivan

6-10 p.m.

Performing in the Seaside Lounge. The Admiral Risty Restaurant, 31250 Palos Verdes Drive West, Peninsula. 310-377-0050, www.AdmiralRisty.com

Wednesday, October 10

Wednesday Luncheon at the Los Angeles Yacht Club

Noon

A luncheon featuring a nautically-related speaker. Open to the public. Los Angeles Yacht Club, 285 Whalers Walk, Cabrillo Marina. 310-831-1203, www.LAYC.org \$20

Scott Grillo

6-10 p.m.

Performing in the Seaside Lounge. The Admiral Risty Restaurant, 31250 Palos Verdes Drive West, Peninsula. 310-377-0050, www.AdmiralRisty.com

Open Mic Night

6:30 p.m.

Musicians and other types of entertainment. Red

Men Wigwam Lodge, 543 Shepard Street, Peninsula. www.SPWigWam.org

Thursday, October 11-Sunday, October 14 and Thursday, October 18-Sunday, October 21

32nd Annual Catalina Island JazzTrax Festival
Times vary

Longest running smooth jazz festival. Avalon Casino Ballroom and Descanso Beach Club, Avalon, Catalina Island. 866-9849, www.JazzTrax.com

Thursday, October 11-Sunday, October 14 14th Annual Many Winters Gathering of Elders
10 a.m.-7 p.m.

Indigenous Elders from across Turtle Island to Tongva Territory will share their traditional teaching and medicine. Educational, cultural, and spiritual activities for the Indigenous and non-Indigenous communities. No cameras, video, or other recording equipment will be allowed. 562-405-5767, www.corneliusprojects.com/many_winters_gathering_of_elders

Thursday, October 11

Farmers Market

9 a.m.-2 p.m.
Providence Little Company of Mary Medical Center, 1300 W. 7th Street, Above Gaffey

Heart of the Harbor Local Harvest Local

Farmers Market

9 a.m.-1 p.m.
L Street between Avalon Blvd. and Marine Avenue, Wilmington

Charles Lamont

6-10 p.m.
Performing in the Seaside Lounge. The Admiral Risty Restaurant, 31250 Palos Verdes Drive West, Peninsula. 310-377-0050, www.AdmiralRisty.com

Friday, October 12

Downtown Farmers Market

9 a.m.-2 p.m.
Farmers market held on 6th Street between Pacific Avenue and Mesa Street Fruits, vegetables, flowers, crafts, jewelry, art, food stalls

Tom Bellizia

6-10 p.m.
Performing in the Seaside Lounge. The Admiral Risty Restaurant, 31250 Palos Verdes Drive

The Paul Gormley Trio

7 p.m.
World class musicians performing traditional jazz with songs made popular from Sinatra to Antonio Carlos Jobim. The Whale & Ale British Restaurant and Pub, 327 W. 7th Street Downtown. 310-832-0363, www.WhaleAndAle.com

Late Night Music

10 p.m.-1 a.m.
San Pedro Brewing Company, 331 W. 6th Street, Downtown. 310-514-3416, www.SanPedroBrewing.com

Saturday, October 13

PV Farmers Market

8 a.m.-1 p.m.
California farmers and food selections with sales supporting the Palos Verdes Peninsula school district. Peninsula High School, 27118 Silver Spur Road, Rolling Hills Estates, Peninsula

Farm Market at The Corner Store

10 a.m.-noon
All produce grown within 10 blocks of the market. The Corner Store, 1118 W. 37th Street, Peninsula. www.GreenGirlFarms.org

Harvest Sunset Sail

5-7:30 p.m.
An opportunity to sail aboard one of LA's Official Tall Ships & Maritime Ambassadors. Members get

10% discount on all ticketed events. Los Angeles Maritime Institute, Berth 73, Suite 2, Waterfront. 310-833-6055, www.LAMITopSail.org \$60/\$30

Markus Carlton jazz guitar

6:30 p.m.
New material, jazz and blues standards. The Whale & Ale British Restaurant and Pub, 327 W. 7th Street Downtown. 310-832-0363, www.WhaleAndAle.com

Charles Lamont

7-11 p.m.
Performing in the Seaside Lounge. The Admiral Risty Restaurant, 31250 Palos Verdes Drive West, Peninsula. 310-377-0050, www.AdmiralRisty.com

Late Night Music

10 p.m.-1 a.m.
San Pedro Brewing Company, 331 W. 6th Street, Downtown. 310-514-3416, www.SanPedroBrewing.com

Sunday, October 14

Fall Craft Fair

10 a.m.-5 p.m.
San Pedro Art Association presents local artists, crafters, and jewelers. Bank of America parking lot, 951 S. Pacific Avenue, San Pedro. 310-831-2928, www.SanPedroArt.org

Richard Leach

5-9 p.m.
Performing in the Seaside Lounge. The Admiral Risty Restaurant, 31250 Palos Verdes Drive West, Peninsula. 310-377-0050, www.AdmiralRisty.com

Tuesday, October 16

Dan O'Sullivan

6-10 p.m.
Performing in the Seaside Lounge. The Admiral Risty Restaurant, 31250 Palos Verdes Drive West, Peninsula. 310-377-0050, www.AdmiralRisty.com



THE WHALE & ALE
SAN PEDRO'S BRITISH RESTAURANT & PUB

327 West 7th St., San Pedro • 310-832-0363
www.WhaleAndAle.com

Free parking in rear • Open daily for lunch and dinner

Wednesday, October 17

Wednesday Luncheon at the Los Angeles Yacht Club

Noon

A luncheon featuring a nautically-related speaker. Open to the public. Los Angeles Yacht Club, 285 Whalers Walk, Cabrillo Marina. 310-831-1203, www.LAYC.org \$20

Scott Grillo

6-10 p.m.

Performing in the Seaside Lounge. The Admiral Risty Restaurant, 31250 Palos Verdes Drive West, Peninsula. 310-377-0050, www.AdmiralRisty.com

Open Mic Night

6:30 p.m.

Musicians and other types of entertainment. Red Men Wigwam Lodge, 543 Shepard Street, Peninsula. www.SPWigWam.org

Thursday, October 18

Farmers Market

9 a.m.-2 p.m.

Providence Little Company of Mary Medical Center, 1300 W. 7th Street, Above Gaffey

Heart of the Harbor Local Harvest Local Farmers Market

9 a.m.-1 p.m.

L Street between Avalon Blvd. and Marine Avenue, Wilmington

Charles Lamont

6-10 p.m.

Performing in the Seaside Lounge. The Admiral Risty Restaurant, 31250 Palos Verdes Drive West, Peninsula. 310-377-0050, www.AdmiralRisty.com

Friday, October 19

Downtown Farmers Market

9 a.m.-2 p.m.

Farmers market held on 6th Street between Pacific Avenue and Mesa Street Fruits, vegetables, flowers, crafts, jewelry, art, food stalls

Tom Bellizia

6-10 p.m.

Performing in the Seaside Lounge. The Admiral Risty Restaurant, 31250 Palos Verdes Drive

The Paul Gormley Trio

7 p.m.

World class musicians performing traditional jazz with songs made popular from Sinatra to Antonio Carlos Jobim. The Whale & Ale British Restaurant and Pub, 327 W. 7th Street Downtown. 310-832-0363, www.WhaleAndAle.com

Fortnight Concert Series

7:30 p.m.

Windy Barnes Farrell who travels the world sharing her gift, will bring the Calvary home with her vocals ranging from Jazz to Pop, to R&B and Gospel. Held in the intimate space through the tunnels of historic Leary Gun Battery of the former Ft. MacArthur. Angels Gate Cultural Center, 3601 S. Gaffey Street, Peninsula. www.AngelsGateArt.org

Late Night Music

10 p.m.-1 a.m.

San Pedro Brewing Company, 331 W. 6th Street, Downtown. 310-514-3416, www.SanPedroBrewing.com

Saturday, October 20

PV Farmers Market

8 a.m.-1 p.m.

California farmers and food selections with sales supporting the Palos Verdes Peninsula school district. Peninsula High School, 27118 Silver Spur Road, Rolling Hills Estates, Peninsula

Markus Carlton jazz guitar

6:30 p.m.

New material, jazz and blues standards. The Whale & Ale British Restaurant and Pub, 327 W. 7th Street Downtown. 310-832-0363, www.WhaleAndAle.com

Charles Lamont

7-11 p.m.

Performing in the Seaside Lounge. The Admiral Risty Restaurant, 31250 Palos Verdes Drive West, Peninsula. 310-377-0050, www.AdmiralRisty.com

Late Night Music

10 p.m.-1 a.m.

San Pedro Brewing Company, 331 W. 6th Street, Downtown. 310-514-3416, www.SanPedroBrewing.com

Sunday, October 21

Richard Leach

5-9 p.m.

Performing in the Seaside Lounge. The Admiral Risty Restaurant, 31250 Palos Verdes Drive West, Peninsula. 310-377-0050, www.AdmiralRisty.com

Tuesday, October 23

Dan O'Sullivan

6-10 p.m.

Performing in the Seaside Lounge. The Admiral Risty Restaurant, 31250 Palos Verdes Drive West, Peninsula. 310-377-0050, www.AdmiralRisty.com

Wednesday, October 24

Wednesday Luncheon at the Los Angeles Yacht Club

Noon

A luncheon featuring a nautically-related speaker. Open to the public. Los Angeles Yacht Club, 285 Whalers Walk, Cabrillo Marina. 310-831-1203, www.LAYC.org \$20

Scott Grillo

6-10 p.m.

Performing in the Seaside Lounge. The Admiral Risty Restaurant, 31250 Palos Verdes Drive West, Peninsula. 310-377-0050, www.AdmiralRisty.com

Open Mic Night

6:30 p.m.

Musicians and other types of entertainment. Red Men Wigwam Lodge, 543 Shepard Street, Peninsula. www.SPWigWam.org

Thursday, October 25

Farmers Market

9 a.m.-2 p.m.

Providence Little Company of Mary Medical Center, 1300 W. 7th Street, Above Gaffey

Heart of the Harbor Local Harvest Local Farmers Market

9 a.m.-1 p.m.

L Street between Avalon Blvd. and Marine Avenue, Wilmington

Charles Lamont

6-10 p.m.

Performing in the Seaside Lounge. The Admiral Risty Restaurant, 31250 Palos Verdes Drive West, Peninsula. 310-377-0050, www.AdmiralRisty.com

Friday, October 26

Downtown Farmers Market

9 a.m.-2 p.m.

Farmers market held on 6th Street between Pacific Avenue and Mesa Street Fruits, vegetables, flowers, crafts, jewelry, art, food stalls

Tom Bellizia

6-10 p.m.

Performing in the Seaside Lounge. The Admiral Risty Restaurant, 31250 Palos Verdes Drive

The Paul Gormley Trio

7 p.m.

World class musicians performing traditional jazz with songs made popular from Sinatra to Antonio Carlos Jobim. The Whale & Ale British Restaurant and Pub, 327 W. 7th Street Downtown. 310-832-0363, www.WhaleAndAle.com

Late Night Music

10 p.m.-1 a.m.

San Pedro Brewing Company, 331 W. 6th Street, Downtown. 310-514-3416, www.SanPedroBrewing.com

Saturday, October 27

PV Farmers Market

8 a.m.-1 p.m.

California farmers and food selections with sales supporting the Palos Verdes Peninsula school district. Peninsula High School, 27118 Silver Spur Road, Rolling Hills Estates, Peninsula

Happy Harbor Halloween

11 a.m.-2 p.m.

An opportunity to see one of LA's Official Tall Ships & Maritime Ambassadors in the Downtown Harbor at the foot of 6th Street at Harbor Blvd. Downtown. 310-833-6055, www.LAMITopSail.org

Markus Carlton jazz guitar

6:30 p.m.

New material, jazz and blues standards. The Whale & Ale British Restaurant and Pub, 327 W. 7th Street Downtown. 310-832-0363, www.WhaleAndAle.com

Sea Scare 2018

7-10 p.m.

Sea Scare brings back favorite attractions like Trick-or-Treat Trail, Seaside Boardwalk, the Sea Scare Party Zone, and Skull Alley. Come in costume for a masquerade of ghosts and goblins. Cabrillo Beach Aquarium, 3720 Stephen M. White Drive, Waterfront. 310-548-7562, www.CabrilloMarineAquarium.org. \$10/\$5/\$7/\$

Charles Lamont

7-11 p.m.

Performing in the Seaside Lounge. The Admiral Risty Restaurant, 31250 Palos Verdes Drive West, Peninsula. 310-377-0050, www.AdmiralRisty.com

Late Night Music

10 p.m.-1 a.m.

San Pedro Brewing Company, 331 W. 6th Street, Downtown. 310-514-3416, www.SanPedroBrewing.com

Sunday, October 28

CoCo

1:30 p.m.

Screening of Disney's Academy Award-winning animated feature as a

prelude to San Pedro's Dia de Los Muertos celebration. Warner Grand Theatre, 478 W. 6th Street, Downtown. www.WarnerGrand.org

Dia De Los Muertos Festival

3-9 p.m.

Altar displays, crafts, food, and music in Downtown San Pedro on 6th Street between Centre Street and Pacific Avenue.

www.SanPedroDayOfTheDead.com

Richard Leach

5-9 p.m.

Performing in the Seaside Lounge. The Admiral Risty Restaurant, 31250 Palos Verdes Drive West, Peninsula. 310-377-0050, www.AdmiralRisty.com

Tuesday, October 30

Dan O'Sullivan

6-10 p.m.

Performing in the Seaside Lounge. The Admiral Risty Restaurant, 31250 Palos Verdes Drive West, Peninsula. 310-377-0050, www.AdmiralRisty.com

Wednesday, October 31

Wednesday Luncheon at the Los Angeles Yacht Club

Noon

A luncheon featuring a nautically-related speaker. Open to the public. Los Angeles Yacht Club, 285 Whalers Walk, Cabrillo Marina. 310-831-1203, www.LAYC.org \$20

Scott Grillo

6-10 p.m.

Performing in the Seaside Lounge. The Admiral Risty Restaurant, 31250 Palos Verdes Drive West, Peninsula. 310-377-0050, www.AdmiralRisty.com

Open Mic Night

6:30 p.m.

Musicians and other types of entertainment. Red Men Wigwam Lodge, 543 Shepard Street, Peninsula. www.SPWigWam.org

The information in this calendar comes from a wide range of sources and may not necessarily have the most current details. Please contact the producers for the latest status on their events

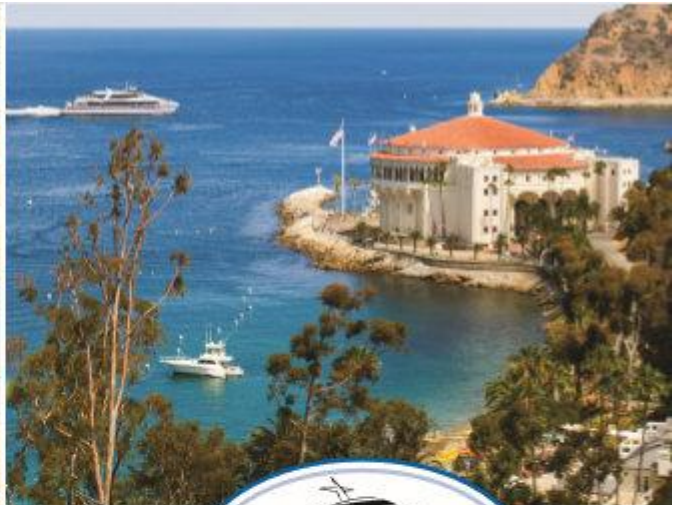
Raffaello Ristorante

GINO CUTRI
Owner



(310) 514-0900 - TEL
(310) 514-0850 - FAX
www.raffaelloristorante.com

400 S. Pacific Ave.
San Pedro, CA 90731
(At 4th Street)



Your Catalina Island journey begins with us.



8 FAST MODERN BOATS. 1 HOUR BOAT RIDE. UP TO 30 DEPARTURES DAILY.

Experience Catalina Island, just an hour boat ride from Southern California's coast! Scenic beauty, high adventure activities, great dining or simply rest and relaxation. With up to 30 departures daily from San Pedro, Long Beach and Dana Point, take the trip for a day, or stay overnight.

CatalinaExpress.com | 800.622.2419

CRAFTED

AT THE PORT OF LOS ANGELES

The Year-Round Crafts Marketplace
Open 11 a.m.-6 p.m. Fri-Sun & 4-8 First Thursday



**Buy Direct
From
Local Artists
and Save!**

Come shop the huge selection of handmade arts and crafts
at the San Pedro Art Association booths at
Crafted at the Port of Los Angeles
112 E. 22nd St in San Pedro

Open Friday-Saturday-Sunday 11am to 7pm
Free Admission and Parking

Mention this ad and receive five dollars off a purchase
of twenty-five dollars or more from an individual artist.
(Not valid on sale or discounted items)

For more information call or text 310-400-9659; visit sanpedroart.org
or our Facebook pages (search San Pedro Art Association)



Bobbn

LISA COSTANZO
www.facebook.com/bobbnaprondesign
www.etsy.com/shop/BobbnApronDesign
bobbnaprondesign@gmail.com



**Urban
Artisan**

Picture Framer Extraordinaire
Expert in Design
By Appointment
or at Crafted space 133

Steve Magee
310-400-9659 voice/text
mageeframing@gmail.com

Susan Soffer Cohn
Artist



www.cohnart.com

Crafted at the Port of Los Angeles

112 E. 22nd Street, San Pedro, CA 90731 Fri, Sat, Sun 11am-6pm
cohnart@yahoo.com 714/702-9799

We are located at



Booth 108

Friday-Sunday 11am to 6pm

112 E. 22nd Street | Warehouse #10 | San Pedro, CA 90731

Denise K. Adams
(310) 487-0654

insideoutsideud@gmail.com



@insideoutsideud

Crafted Port of Los Angeles
Owner Kelly Reid
San Pedro, California 90502



562-235-9596
Facebook TheVintageShop2
Or SputnikLampCompany.com
VintageGirlCat@yahoo.com

Beadwork by cgm
Jewelry • Crosses • Miniature Trees
◆ **Carmen Guevara Moen** ◆
Artist

cdmoen@sbcglobal.net • (310) 833-8345
beadworkbycgmjewelryla.com

CRAFTED  **★ ★**
AT THE PORT OF LOS ANGELES

112 E. 22nd Street

at the corner of Harbor Blvd. & 22nd Street
on the Waterfront

Global Gifts



**A FAIR TRADE MARKETPLACE
Benefits UNICEF**

(310) 548-1762 globalgiftsuna@yahoo.com
Open: 11am-6pm Fri-Sat-Sun

banter & bliss
CANDLE CO

hello@banterandbliss.com www.banterandbliss.com



/banterandbliss



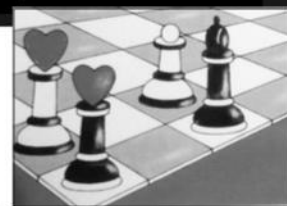
PARADISE PRESERVES
Jams Jellies Marmalades

PRESERVES, PICKLES AND MORE AVAILABLE FOR PURCHASE AT
CRAFTED AT THE PORT OF LOS ANGELES #199
112 E 22ND STREET • WAREHOUSE 10 • SAN PEDRO, CA 90731
PARADISEPRESERVES@GMAIL.COM

CURIOSITY

CURIOSITY MAKES

Art, Illustrations
and Photography
Jewelry and Accessories
Necklaces and Keychains
Stationery and Paper Goods



eigold7@att.net • (323) 640-8186

Space #148

INSTAGRAM www.Instagram.com/eileen_golden

PROPRIETORS Eileen Golden & Anthony Simpson

Urban Feet
Shoes & Clothing



Skate
Equipment

329 W. 6th Street
San Pedro, CA 90731

(310) 832-9364

Our Partner Schools

Alliance Alice M. Baxter High School

461 W. 9th Street, San Pedro
310-221-0430, www.BaxterHigh.org



Christ Lutheran School

28850 S. Western Avenue, Rancho Palos
Verdes, Peninsula
310-831-0848, www.ChristRPV.com



Holy Trinity School & Preschool

1226 W. Santa Cruz Street, San Pedro
310-833-0703,
www.School.HolyTrinitySP.org





Ms. Alexander

479 W. 6th St. #101 San Pedro, CA 90731

Carol Alexander

msalexander.net

b2h2251@gmail.com

310.953.6110

ALICE RODRIGUEZ

SPV's Preferred REALTOR®



**Relocating to
Los Angeles?**

15 Yrs. Experience:

- Sales
- Rentals
- Family Relocation

310-738-2511

arod@kw.com

www.arod.yourkwagent.com

Lic# 01362049



Keller Williams LA Harbor Realty
28901 S Western Ave., Ste. 139
Rancho Palos Verdes, CA 90275

Churches & Spiritual Organizations



Community Christian Church

Follow the Cross

1903 W. Summerland Drive

Rancho Palos Verdes

318-832-7304

www.cccrpv.org



The Garden Church

Worshiping, loving and serving together

429 W. 6th Street

Downtown

www.gardenchurchsp.org



San Pedro United Methodist Church

Open Hearts, Open Minds, Open Doors

580 W 6th Street

San Pedro

310-548-1001

www.sanpedroumc.org



Temple Heights Southern Baptist Church

We would love to meet you!

888 Hamilton Avenue

San Pedro

310-831-5446



Ministerios Torrente de Besor

Services Sundays at 9 a.m. and 5 p.m. in Spanish

1491 W. O'Farrell Street

San Pedro

310-901-5490



Christ Lutheran Church

28850 S. Western Avenue

Rancho Palos Verdes

310-831-0848

<https://church.christrpv.com>

EXPERIENCE REAL LIVING HISTORY

Right on the LA Waterfront

SS LANE VICTORY

**Three-War Veteran
of the United States Merchant Marine**

Berth 49 at the end of Miner Street/Harbor Blvd.

www.LaneVictory.org

Open Daily

Visit



San Pedro, California

Best Dining

San Pedro | Harbor | Peninsula | Catalina Island

Visitor Center 225 W. 6th Street, Downtown



327 West 7th Street, Downtown

San Pedro

Voted best fish & chips and best seafood restaurant in LA

www.WhaleAndAle.com 310 832 0363

Entertainment



247 N. Gaffey St.

310-548-6964

*Featured on Food Network's
Diners Drive-Ins, and Dives*



Sea and Air Terminal

Berth 95 | San Pedro

310.707.2440

www.CatalinaBistro.com



Cooking great since 1968!

Enjoy Breakfast, Lunch and Dinner
7 days a week

511 S. Harbor Blvd. 310.832.1267

Get coupons at
www.GrinderRestaurants.com



141 West 22nd St.

On the marina

310-548-4400

www.22ndstLandingRestaurant.com

Voted South Bay's Favorite Seafood Restaurant 2016 — Daily Breeze



Featuring Fresh Seafood, Steaks, Lamb
31250 Palos Verdes Drive West
Rancho Palos Verdes

310-377-0050

www.AdmiralRisty.com

San Pedro Café

At the top of Historic Downtown

Sandwiches, salads, entrees, and all your favorites Breakfast served all day

605 S. Pacific Ave Ste 103 (310) 547-0961

JOLLY BURRITO

7am-9pm EVERY DAY

Fresh & Authentic

(310) 832-9196

726 S Pacific Avenue

www.JollyBurrito.com

Raffaello Ristorante

400 S. Pacific Avenue (at 4th Street)

(310) 514-0900 www.RaffaelloRistorante.com



A Slice of Pedro

Family Owned & Operated

347 W. 6th Street, Downtown

310-514-2500

www.PhilieBsOn6th.com

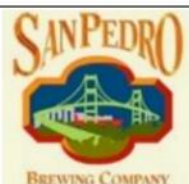
The Original Las Brisas

Since 1982

Great Mexican Food

1110 North Gaffey Street, Suite D Northwest San Pedro

310-833-4395



Warm, friendly neighborhood pub
atmosphere. Award-winning food and beer

331 W. 6th St.

(310) 831-5663

www.SanPedroBrewing.com



Once you have it ... You'll love it!
Breakfast Served All Day!

617 S Centre St, Downtown

Happy Diner #2,

1931 N. Gaffey Street

Happy Diner Deli 530 S. Gaffey Street

310-241-0917

www.HappyDinerSP.com



Sacred Grounds

Great coffee • good vibes • sandwiches • salads • pastries

468 W 6th St, San Pedro *Next to the Warner Grand Theatre*

(310) 514-0800

The Directory

Where to **Dine**, **Shop**, **Experience**, **Enjoy**

San Pedro | Harbor | Peninsula | Catalina Island

Art/Galleries/Museums

It's Showtime Art Deco and more, 741 S. Pacific Avenue, Uptown 310-351-0070, www.DecoArtDeco.com

Angels Gate Cultural Center, 3601 S. Gaffey Street, Peninsula 310-519-0936, www.AngelsGateArt.org

The Banning Museum, 401 E. M Street, Wilmington 310-548-2005, www.TheBanningMuseum.org

Cabrillo Marine Aquarium, 3720 Stephen M. White Drive, Cabrillo Beach 310-548-7562, www.CabrilloMarineAquarium.org

Catalina Island Museum 217 Metropole Avenue, Avalon, Catalina Island. 310-510-2414, www.CatalinaMuseum.org

Gil Mares Photography fine art photography, 310-902-0682, www.GilMares-Photography.com

National Watercolor Society Gallery, 915 S. Pacific Avenue, Uptown, 310-831-1099, www.NationalWatercolorSociety.org

SS Lane Victory, Berth 49, 3600 Miner Street, Waterfront. 310-519-9545, www.TheLaneVictory.org

Our Creations décor, crafts, & supplies, wedding, party 416 West 6th Street, Downtown 310-519-8231

Parkhurst Galleries, 439 W. 6th Street, Downtown, 310-547-3158, www.ParkhurstGalleries.com

San Pedro Arts Association at CRAFTED, 112 E. 22nd Street, Waterfront 310-831-2928, www.SanPedroArt.org

San Pedro City Ballet, 1231 S. Pacific Avenue, San Pedro 310-732-1861, www.SanPedroBalletSchool.com

Warner Grand Theatre, 478 W. 6th Street, Downtown 310-548-7672, www.WarnerGrand.org

Food/Dining/Nightlife

Whale & Ale British Restaurant & Pub, 327 W. 7th Street, Downtown 310-832-0363 www.WhaleAndAle.com

Catalina Bistro & Express Grill, Catalina Express Sea & Air Terminal, Berth 95 (at Swinford and Harbor Blvd.), San Pedro Waterfront 310-707-2440, www.CatalinaBistro.com

blu at Crowne Plaza Los Angeles Harbor Hotel, 601 S. Palos Verdes Street, Downtown 310-519-8200

22nd Street Landing Seafood Grill and Bar, 141-A W. 22nd Street, Cabrillo Marina, San Pedro Waterfront 310-548-4400, www.22ndStreetRestaurant.com

Gaffey Street Diner, 247 N. Gaffey Street 310-548-6964

Godmothers Saloon, 302 W. 7th Street, Downtown 310-833-1589

Grinder, 511 S. Harbor Blvd. on the San Pedro Waterfront. 310-832-1267, www.GrinderRestaurants.com

Happy Diner American diner and Mexican, 617 S. Centre Street, Downtown 310-833-6799, www.HappyDinerSP.com

Happy Diner #2, 1931 N. Gaffey Street, NW San Pedro

Happy Deli, 530 S. Gaffey Street, Downtown

The Original Las Brisas, 1110 N. Gaffey Street, Suite D., NW San Pedro 310-833-4395, www.TheOriginalLasBrisas.com

Jolly Burrito Grill, 726 S. Pacific Avenue, Uptown 760-694-6888, www.JollyBurrito.com

Philie B's pizza, subs, pasta, 347 W. 6th Street, Downtown 310-514-2500, www.PhilieBs.com

Raffaello Ristorante, 400 S. Pacific Avenue, Uptown 310-514-0900, www.RaffaelloRistorante.com

Sacred Grounds coffee house, salads, sandwiches, 468 W. 6th Street, Downtown 310-514-0080

San Pedro Brewing Company, 331 W. 6th Street, Downtown 310-831-5663, www.SanPedroBrewing.com

San Pedro Café, 605 S. Pacific Avenue Suite 103, Downtown 310-547-0961, www.SPCafeInc.com

Terranea Resort eight dining venues, 100 Terranea Way, Rancho Palos Verdes 866-802-8000, www.Terranea.com

The Admiral Risty seafood, steaks, 31250 Palos Verdes Drive West, Rancho Palos Verdes 310-377-0050, www.AdmiralRisty.com

Maritime/Boating

Spirit Cruises, Shoreline Village, Long Beach 310-548-8080, www.SpiritMarine.com

Los Angeles Yacht Club, 285 Whalers Walk, Cabrillo Marina 310-831-1203, www.LAYC.org

Buccaneer Yacht Club, 241 Watchorn Walk, Berth 34, Holiday Harbor Marina. 310-413-8238, www.BUCYC.org

Cabrillo Way Marina, 2293 Miner Street, Cabrillo Way Marina 310-514-4985, www.CabrilloWay.com

Los Angeles Maritime Institute—Official LA Tall Ships, Berth 73, Suite 2, San Pedro Waterfront 310-833-6055, www.LAMITopSail.org

Motor Yacht Mauretania 310-833-9955, www.MotorYachtMauretania.com

Los Angeles Harbor Boat Show www.SoCalBoatShow.com
SUP With Wade stand up paddle boarding lessons 310-968-0003, www.SupWithWade.com

Recommended Hotels

Crowne Plaza Los Angeles Harbor Hotel, 601 S. Palos Verdes Street, Downtown 310-519-8200

Best Western Plus San Pedro Hotel & Suites, 111 S. Gaffey Street, Above Gaffey 310-514-1414

Terranea Resort, 100 Terranea Way, Rancho Palos Verdes 866-802-8000, www.Terranea.com

Real Estate

Alice Rodriguez Realtor, Keller Williams, 28901 S. Western Avenue, Suite 101, Rancho Palos Verdes, Peninsula. 310-738-2511. Mobile 310-738-2511, www.kw.com/kw/agent/arod

Shopping & Services

It's Showtime, Art Deco and more, 741 S. Pacific Avenue, Uptown 310-351-0070, www.DecoArtDeco.com

Badfish Clothing Co., 337 W. 6th Street, Downtown 310-521-9965, www.BadFishClothing.com

Bringelson Jewelers, 461 W. 6th Street, Downtown. 310-832-5482, www.FaceBook.com/BringelsonJewelers

Dramatique, a clothing store and more that's anything but ordinary, 319 W. 6th Street, Downtown, www.1Dramatique.com

Ms. Alexander women's fashions, 479 W. 7th Street, Downtown 310-953-6110, www.MsAlexander.net

Our Creations décor, crafts, & supplies, wedding, party 416 West 6th Street, Downtown 310-519-8231

Rok 'n' Ell Baby Boutique & More, 1438 W 8th Street, Weymouth Corner 310-832-4145, www.RoknEllBaby.com

South Shores Ace Hardware, 2515 S. Western Avenue, Peninsula 310-833-1223

T-mobile, 422 S. Gaffey Street 310-521-8747

Urban Feet, 329 W. 6th Street, Downtown 310-832-9364

Health, Fitness, & Recreation

Spirit Cruises, Shoreline Village, Long Beach 310-548-8080, www.SpiritMarine.com

Catalina Express, Berth 95, San Pedro Waterfront; Catalina Landing, Long Beach 800-481-3470, www.CatalinaExpress.com

All Fit conditioning, nutrition, mindfulness, 279 W. 7th Street, Downtown. 310-424-287-0432, www.AllFitGroup.com

Belmont Shore Railroad Club, 3601 S. Gaffey Street, Peninsula 310-831-6262, www.BelmontShoreRR.com

Dr. Ja'nae Brown, PT, DPT physical therapy 310-548-5984, www.DRJanaeBrownPT.com

EnerG Wellness, 263 W. 7th Street, Downtown. 424-570-0498, www.EnergWellnessCenter.com

Lanta Salon, 285 W. 6th Street, Unit 104, Downtown 310-521-0828, www.LantaSalon.net

SUP With Wade stand up paddle boarding lessons. 310-968-0003, www.SupWithWade.com

Our Community

The Canterbury, 5801 Crestridge Road, Rancho Palos Verdes, Peninsula. 877-318-1795, www.TheCanterbury.org

Community Christian Church, 1903 W. Summerland Drive, Rancho Palos Verdes. 318-832-7304, www.CCCRPV.org

The Garden Church, 429 W. 6th Street, Downtown, www.GardenChurchSP.org

Marine Mammal Care Center, 3601 S. Gaffey Street, Peninsula. 310-548-5677, www.MarineMammalCare.org

Marymount California University, 30800 Palos Verdes Drive East Rancho Palos Verdes 310-377-5501, www.MarymountCalifornia.edu

Ministerios Torrente De Besor 1491 W. O'Farrell Street, San Pedro. 310-350-901-5490

San Pedro United Methodist Church, 580 W 6th Street. 310-548-1001, www.SanPedroUMC.org

Random Lengths News, 1300 S. Pacific Avenue 310- 519-1016, www.RandomLengthsNews.com

San Pedro Chamber of Commerce, 390 West 7th Street, Downtown 310-832-7272, www.SanPedroChamber.com

Temple Heights Southern Baptist Church, 888 W. Hamilton Avenue, San Pedro 310-831-5446,

The Topaz Building, 222 W..6th Street, Downtown 310-514-2400, www.TopazSanPedro.com

The Vue Apartments, 255 W. 5th Street, Downtown 866-585-1972, www.CarmelApartments.com/the-vue-san-pedro-ca

The Original Since 1982

Las Brisas

Mexican Food

A San Pedro Landmark for over 35 years!

310.833.4395

1110 N. Gaffey St. Suite D, San Pedro, CA 90731
OPEN: 7 days a week 10 am. to 11pm.

VISA, MasterCard, Discover, Facebook, Instagram, Yelp

W. Channel St. N. Gaffey St. N. Pacific Ave.



For all your
information
needs, visit the
tourism
authority



Proudly serving the
community for
over 90 years.

Providence Little Company of Mary Medical Center San Pedro has been serving the needs of the Peninsula, Harbor and San Pedro communities since 1925.

Over the years, we have earned a reputation for clinical excellence and sophisticated technology with a personal touch. In addition to the finest medical, surgical and critical care services, we offer a number of specialty programs, including:

- Cancer care
- Center for Optimal Aging (senior services)
- Chemical dependency care
- Diabetes care
- Emergency care
- Hospice care
- Imaging/radiology services
- Neurology and stroke care
- Obstetric care
- Orthopedic care
- Psychiatric care
- Rehabilitation services
- Spiritual care
- Sub Acute care

PROVIDENCE
Little Company of Mary
Medical Center
San Pedro

888-HEALING (432-5464)
Providence.org/SanPedro

Waterfront Wow!

Cruise the Dynamic Long Beach Harbor

3 YACHTS AT YOUR SERVICE

PUBLIC DINNER CRUISES • PRIVATE CHARTERS

WHALE WATCHING • HARBOR TOURS

AWARD-WINNING ALL-INCLUSIVE PACKAGES

CORPORATE EVENTS • BIRTHDAYS

CELEBRATIONS OF LIFE

QUINCEAÑERAS • WEDDINGS

WE DO IT ALL!



SINCE 1984, WE HAVE PROVIDED THE
PERFECT EXCURSION FOR MANY OCCASIONS.
WE CAN ACCOMMODATE 20-140 GUESTS
FOR YOUR NEXT REMARKABLE GATHERING.

PERHAPS THE BEST DESTINATION
FOR YOUR NEXT OCCASION
IS WITH SPIRIT!



310-548-8080

spiritmarine.com

429 Shoreline Village Drive, Dock 9
Long Beach, CA • 90802