

# Travel Agent Meeting Planner Guide

# Preview

San Pedro  
Palos Verdes Peninsula  
Los Angeles Harbor

Visit



San Pedro, California

TM

# Visit



## San Pedro, *California*

416 W. 6th Street San Pedro CA 90731 310-729-9828 [www.VisitSanPedro.org](http://www.VisitSanPedro.org)

### **We look forward to welcoming you and your clients to San Pedro!**

It's a great place for a visit, a meeting, or an event. And we're here to help you.

We're Visit San Pedro, the independent visitor services organization for the region that includes San Pedro, the Los Angeles Harbor and Palos Verdes Peninsula communities, and Catalina Island.

First-time visitors are surprised that there's so much to see and do in our area.

Whether it's sightseeing, leisurely shopping, or adventure—or all of those—we've got what people want.

And we're in a great location to access all of Southern California's tremendous attractions.

Plus, we're a great location to visit before or after a cruise.

We're home to the Los Angeles World Cruise Terminal, the largest on the West Coast.

San Pedro is a great place for meetings up to conference size with really great services available.

And we can handle very large events, like concerts, with plentiful space and great facilities.

Our hotel rates are reasonable, our food is great, our attractions are plentiful. We have history, we have great service and a commitment to making everyone's stay memorable and pleasurable.

And please note that we are not a typical convention and visitors bureau. We do not receive government funding and we are selective about the businesses and organizations that we partner with. They must meet high standards of service so that we can recommend them without reservation. The businesses and service providers you will find in this guide are without question the best in our region.

So we hope you'll consider San Pedro for your clients, for your meetings, for your events.

Sincerely,

Scott F. Gray, Ed.D.  
President

**NOTE:** This is a preview edition of the Travel Agent & Meeting Planner Guide. Check back for the final edition.

The Travel Agent & Meeting Planner Guide is published by Visit San Pedro, the visitor services division of the Southern California Education, Tourism, & Cultural Organization (SoCal ETC). Fourth Edition 2020. All rights reserved.

# Contents

<b>Welcome to San Pedro</b>	
Our Region	
San Pedro, Wilmington, and the Other Los Angeles Harbor Communities	
Palos Verdes Peninsula	
Catalina Island	
About Visit San Pedro	
<b>Hotels &amp; Accommodations</b>	
Cruising from the Los Angeles World Port?	
<b>Best Dining</b>	
<b>Getting Here &amp; Getting Around</b>	
By Automobile	
By Air	
Public Transit	
<b>Cruise Information</b>	
Park and Cruise Deals	
<b>Great Spot for Meetings</b>	
Meeting and Event Spaces	
Best Hotels for Events	
Catering	
Group tours	
Weddings	
Reunions	
<b>Shopping</b>	
<b>A Town of the Arts</b>	
<b>Annual and Special Events</b>	
<b>Recreation</b>	
Golf	
For Mariners	
Fun Attractions for the Family	
Catalina Island	
<b>Tours</b>	
Southern California/Hollywood	
San Pedro Tours	
<b>The Directory</b>	



# Welcome to San Pedro

## Our Region

**San Pedro is at the center of a distinctive region that comprises Los Angeles Harbor and surrounding communities, the Palos Verdes Peninsula communities, and Catalina Island.**

It's an area with a rich history and plenty to enjoy today.

San Pedro is a great place to visit and the perfect location as a headquarters for visiting all of Southern California.

## *San Pedro, Wilmington, and the Other Los Angeles Harbor Communities*

**San Pedro** is in the very southern part of the City of Los Angeles. San Pedro residents agreed to be annexed by the city in 1909 to gain greater resources for development of the harbor. Today it has about 90,000 residents.

But San Pedro's history goes much further back; it was discovered by Juan Cabrillo in 1542, on the Feast Day of St. Peter of Alexandria. Thus, he named it in the saint's honor. (By the way, locals pronounce it "San Peedro," with different explanations for this, depending upon whom you ask.)

The town grew up around the docks, shipyards, and fishing boats of the harbor.

Along the way it became a California classic, with many of its vintage buildings preserved and still in use, with a sizable number put to adaptive reuse.

There's the former Municipal Ferry Building from 1942 that's been repurposed into the Los Angeles Maritime Museum. Or the Brown Bros. Building and Arcade Buildings in **Historic Downtown San Pedro** that house retail spaces and professional offices. The early 1920's Montgomery Ward department store is now the Art Deco Museum of Los Angeles. The San Pedro Municipal Building, better known as "San Pedro City Hall," is still in use for city offices, along with the jail museum. And perhaps the best-known historic building is the fabulous Warner Grand Theatre, a 1931 movie palace that's host to films, theater, music, and dance productions, along with other types of programming.

Everywhere you go in San Pedro you'll find history.

And its Historic Downtown is a wonderful shopping district with lots of restaurants and entertainment.

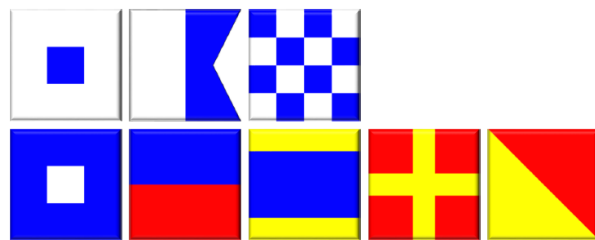
The primary shopping is on **6th Street**, which runs directly up from the San Pedro Waterfront.

**Downtown San Pedro 7th Street Village** has become the international blocks with Mediterranean, English, Italian, and other dining and shopping.

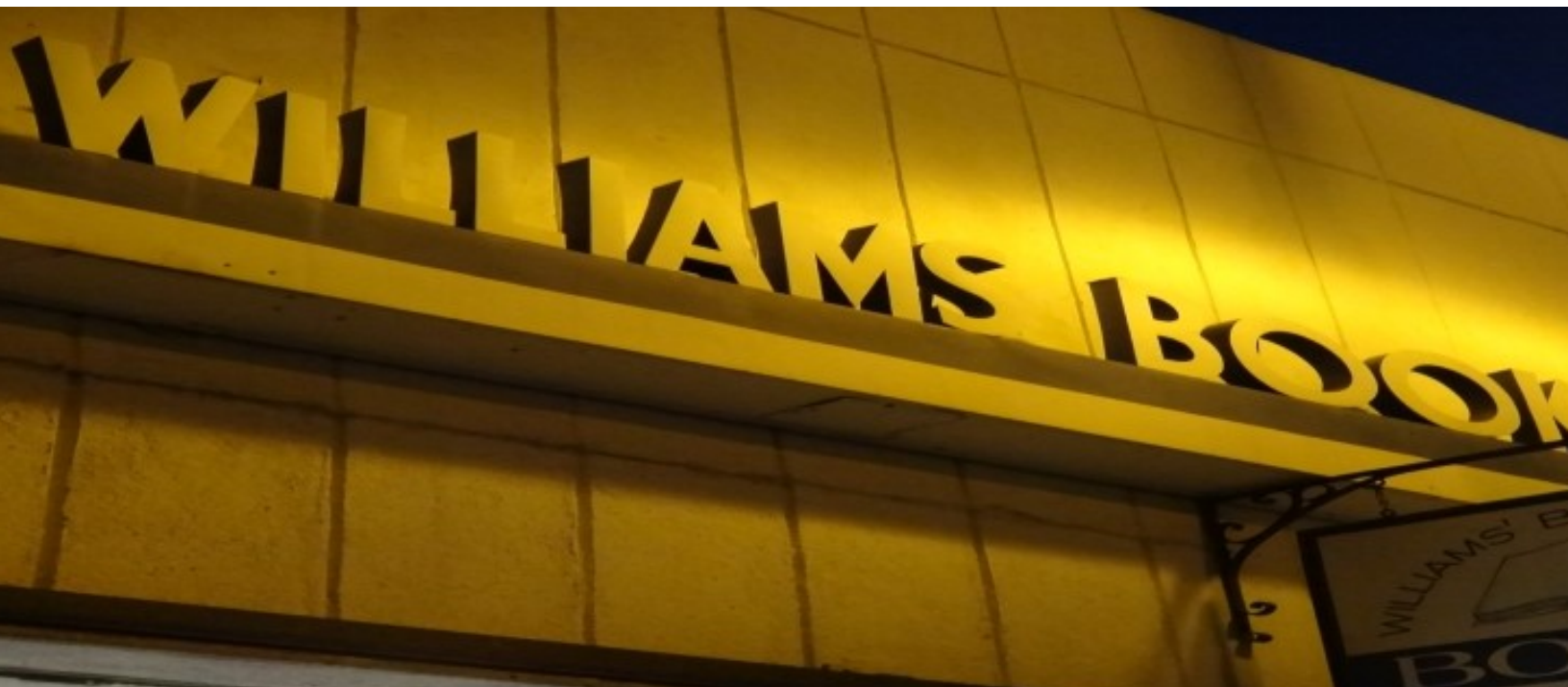
**And it's a town of the arts.** You'll find a range of studios and galleries throughout San Pedro and particularly concentrated in the Waterfront Arts District between 4th and 9th Streets and Pacific Avenue and the Waterfront.

The arts led to another example of historical preservation: **CRAFTED at the Port of Los Angeles** is an art and craft

# Visit



## San Pedro, California





marketplace housed in a former World War II era warehouse.

**Throughout the year you'll find first-rate traveling and local entertainment at our great performance venues.**

**The Warner Grand Theatre** is the scene for stage plays, concerts, film festivals, and individual films. It's also a great location for large meetings, seating up to 1,525 guests split between the 900-seat orchestra section and the approximately 600 seats in the balcony. Contact Lee Sweet, general manager, for information on renting the theater at 310-548-2493. The performance schedule is available at [www.WarnerGrand.org](http://www.WarnerGrand.org).



**Grand Vision Foundation** offers a long season of performances in its Grand Annex. Grand Vision is the support organization that has been working to restore The Warner Grand Theatre to its original elegance. Grand Annex performance schedules are available at [www.GrandVision.org](http://www.GrandVision.org).

**The Palos Verdes Performing Arts Center** in Rolling Hills Estates on the Palos Verdes Peninsula consists of the Norris Theatre and smaller Conservatory, where performances are held. The Norris Theatre, in particular, hosts big production shows and well-known musical acts. The Harlyne J. Norris Pavilion is a beautiful events venue within the Performing Arts Center. Box Office information is available at 310-544-0403 ext. 221

The **San Pedro Waterfront** is a story of renaissance, too. At one time it was all industrial, with railroad tracks and shipyards (and smoke and noise) the dominant parts of the landscape. Today, the west side of the Los Angeles Harbor Main Channel from the Vincent Thomas Bridge all the way around the coast to Redondo Beach has been transformed for recreation, science, and nature. You'll find marinas and beaches and tide-pools and hiking trails and great scenery.

There's lots to explore in San Pedro. Take a look at the articles in this guide for details.

**Wilmington** is just to the northeast of San Pedro (and if you're making your way around Los Angeles Harbor, it's right next door).

It's considered to be where Los Angeles Harbor was founded. Phinneas Banning, known as the father of the Harbor, built Wilmington, naming it after his hometown in Delaware. He developed the landing at Wilmington that would become a part of the largest maritime complex on the West Coast and connected it to his railroad.

During the Civil War, Banning was awarded a commission as a brigadier general in the Union Army and built a grand mansion in Wilmington to show, through his investment, that he was confident the nation would endure as one after the war ended. You can tour the wonderfully preserved and restored Banning residence as **The Banning Museum** today. It's located in Banning Park.

Just down the street from the Banning Museum is **Drum Barracks**, another Civil War-era building. What remains of the former Camp Drum were once junior officer quarters. The museum tells the story of California and the west during the Civil War. There are also a number of events and ongoing historical activities held at Drum Barracks.

Wilmington is a diverse town with many choices for local dining.

**Another Los Angeles Harbor area community is Lomita.** This independent city is home to the **Lomita Railroad Museum** in a park that features actual steam-era engines and cars with a fine small museum with displays about the history.

Lomita also offers a wide range of dining and many smaller motels.

**Next door to Lomita is Harbor City**, like San Pedro and Wilmington, a part of the City of Los Angeles. From small locally owned restaurants to national chains, Harbor City offers many dining choices. There's also a range of shopping. It's home to a large Kaiser Permanente medical center.

### ***Palos Verdes Peninsula***

San Pedro hill that overlooks the town of San Pedro is the crown of the Palos Verdes Peninsula, anchoring Southern California's beautiful South Bay.

The Peninsula is home to Rancho Palos Verdes (RPV), the largest of its cities. And **Terranea Resort**, California's finest

coastal resort is in RPV.

While much of the Peninsula remains natural, protected largely by preserves overseen by the **Palos Verdes Land Conservancy**, there are several shopping centers that include outstanding dining. There are also golf courses, equestrian activities, and the beautiful performing arts center.

### ***Catalina Island***

**Catalina Island** is a wonderland located about 22 miles off the coast of San Pedro. It's got history. It's got nature. It's got adventure. It's got dining. And it's got bison.

No one is exactly sure how the bison got to Catalina Island, but they were probably brought over for a movie being shot on the island. And they were left there to flourish.

And that's part of what makes Catalina a wonderful place. Before William Wrigley, the chewing gum magnate who owned and developed much of the island, died he made provisions for it to be conserved for nature.

And, so, it's a place where not only non-native bison can live well, but all kinds of native plant and animal life, too. That goes for people.

Avalon is the city on the island and it's got everything a visitor could want: a calm beach, great hotels and dining, attractions on the water, and the **Catalina Casino**, a grand Moorish-style structure that showed some of the first talking movies, hosts dances and soirees, and is an icon known around the world.

Catalina offers something for everyone, whether you're an active adventure-seeking traveler or someone who wants to enjoy a drink and great views. Lots of activities for families and for people who love the water.

The island is about an hour away on fast comfortable boats from San Pedro, Long Beach, and (with a little longer voyage) Dana Point in Orange County operated by **Catalina Express**.

### ***About Visit San Pedro***

As you can see, the San Pedro area has plenty to offer to visitors. We hope you'll find the information you need to get your clients to San Pedro. If you have any questions, we're at your service.

Visit San Pedro is the independent visitor services organization for the region. It was established 10 years ago and it's not a typical convention and visitor bureau; Visit San Pedro is not funded by any government or taxes. Visit San Pedro is the visitor services and information division of the Southern California Education, Tourism, & Cultural Organization (SoCal ETC).

Its focus is on ensuring that the San Pedro region is a great place to visit.

**A note about our Affiliates:** Visit San Pedro invites select organizations to become affiliates, either as Sponsors, Partners, or Associates. Affiliates must meet standards of service and, in the case of dining establishments, must demonstrate high health inspection scores. Renewal of affiliation is contingent upon continued outstanding service. You can have confidence when recommending Visit San Pedro Affiliates.

#### **Visit San Pedro**

416 W. 6th Street

San Pedro, CA 90731

Executive office 310-729-9828 ♦ Visitor information 424-364-6865 ♦ [Info@VisitSanPedro.org](mailto:Info@VisitSanPedro.org) ♦ [www.VisitSanPedro.org](http://www.VisitSanPedro.org)



**Overview of Avalon Harbor with two cruise ships in port. The Casino is seen on the left.**

—Photo courtesy Catalina Island Chamber of Commerce & Visitors Bureau



## Hotels & Accommodations

San Pedro offers a range of hotels, motels, and even a hostel. You'll find the right place to fit any lifestyle and budget.

We are proud to present only the very best properties in the region. Each has passed rigorous quality inspections. And the properties in San Pedro provide great value and special offers.

The featured properties below get our recommendation. You're sure to find your special place.



**Best Western Plus San Pedro Hotel & Suites**, 101 N. Gaffey Street, Above Gaffey This hotel looks like a French chateau nestled into the side of the hill. Inside it offers European elegance in its new decor throughout. The rooms are the largest in San Pedro and offer stunning vistas of the harbor and beyond. Continental breakfast is offered. 866-599-6674, [www.BestWestern.com](http://www.BestWestern.com).

**The Vagabond Inn**, 215 N. Gaffey Street. This great hotel is conveniently off the Harbor Freeway and is one of the best values in the region. Great park and cruise options and free shuttle to the World Cruise Terminal. Continental breakfast is included in rates. 310-831-8911, [www.VagabondInn.com](http://www.VagabondInn.com).

**Terranea-LA's Oceanfront Resort**, 100 Terranea Way, Rancho Palos Verdes Dramatically poised at the edge of the Pacific Ocean on the Palos Verdes Peninsula, Terranea's 102 acres are infused with the elegance of a classic Mediterranean estate, the casual energy of coastal Southern California, and countless ways to spend your days Guest rooms, suites, bungalows, casitas, and villas. A host of world-class amenities, including spectacular dining venues, a world-class spa, a stunning nine-hole golf course and family-friendly activities. A one-of-a-kind spot for weddings, corporate events, family memories. On the site of the former Marineland of the Pacific. 866-802-8000, [www.Terranea.com](http://www.Terranea.com).



**The DoubleTree by Hilton San Pedro-Port of Los Angeles** offers accommodation on the marina with many amenities on site. One of the best hotels in the area for meetings and events. 310-514-3344, [www.doubletree3.hilton.com](http://www.doubletree3.hilton.com).

**Motel 6**, 820 W. Sepulveda Blvd., Harbor City. 310-549-9560, [www.Motel6.com](http://www.Motel6.com).

**HI Los Angeles South Bay Hostel\***, Angels Gate Park, 3601 S. Gaffey Street, 310- 831-4635, [www.hiusa.org](http://www.hiusa.org).

\*The hostel is not a Visit San Pedro affiliate; information is provided only for your convenience and is not a recommendation.

### ***Cruising from the Los Angeles World Port?***

Encourage your clients to stay for a night—or several— before their cruise at the Vagabond Inn, San Pedro Hotel and Suites, DoubleTree by Hilton, or Terranea Resort and take advantage of their park and cruise offers. Check with the hotels for offers available for your clients’ cruise dates. Park and cruise offers for some properties do sell out and may be capacity limited.

See information about cruise to and from Los Angeles on page 15.

## **Hints On Which Hotels to Book for Types of Visitors**

	<b>Best Western Plus San Pedro Hotel &amp; Suites</b>	<b>DoubleTree By Hilton San Pedro-Port of Los Angeles Hotel</b>	<b>HI LA South Bay Hostel</b>	<b>Motel 6 Harbor City</b>	<b>Terranea Resort</b>	<b>Vagabond Inn</b>
Adventure			★		★	
Business	★	★		★	★	★
Pre-post-cruise	★	★		★	★	★
Family Travel	★	★		★	★	★
Groups	★	★			★	
Luxury					★	
Solo	★	★		★	★	★
With Friends	★	★			★	★



**Terranea Resort Ballroom**

## Best Dining

San Pedro and the Palos Verdes Peninsula is growing as a destination region for great culinary experiences. With its longtime classic restaurants and new establishments coming on line, it offers an international variety, high quality, great service, and views you can't find anywhere else.

**The Whale & Ale British Restaurant & Pub** has been drawing people to San Pedro for nearly three decades. There's something special about a restaurant that's lasted that long and for The Whale & Ale it's award-winning prime rib, fish and chips, apple pie, shepherd's pie, along with a full menu of British favorites. It might also be the full bar that's anchored by taps of the world's favorites. Part of its success is definitely the setting. It's an oak-walled Victorian wonder of beauty. There's also the regular schedule of first-rate entertainment.

**Whale & Ale British Restaurant & Pub**, 327 W. 7th Street, Downtown 310-832-0363, [www.WhaleAndAle.com](http://www.WhaleAndAle.com)

You don't have to be traveling to or from Catalina Island to enjoy the **Catalina Bistro & Express Grill** at the San Pedro and Long Beach terminals. (But we recommend that trip for everyone.) The San Pedro location offers a tempting menu in a stunning setting right under the Vincent Thomas Bridge and next to the Main Channel, where the big ships transit in and out of the harbor. They've got salads, sandwiches, and more. Beer and wine, too.

**Catalina Bistro & Express Grill**, Catalina Express Sea & Air Terminal, Berth 95 (at Swinford and Harbor Blvd., San Pedro Waterfront 310-707-2440, [www.CatalinaBistro.com](http://www.CatalinaBistro.com)

Most people aren't familiar with Moroccan cuisine. **Babouch Moroccan Restaurant & Lounge** is the perfect place to discover (or rediscover) this amazing food. It's part Mediterranean and more. It's also got Arabic, European, and many other influences. And you can enjoy lots of meat-eater selections, along with great vegetarian dishes. Plus, the lounge of-



**22nd Street Landing Seafood Grill & Bar**



fers full bar service and long happy hours. A great place for an event, too.

**Babouch Moroccan Restaurant & Lounge**, 810 S. Gaffey Street, San Pedro. 310-831-0246, [www.BabouchMoroccan.com](http://www.BabouchMoroccan.com)

Where is the best seafood in Southern California? It's at **22nd Street Landing Seafood Grill and Bar**. And that happens to be on the most beautiful marina in Southern California. It's located on the upper level and gives great views. Its verandah overlooks the boats with great views of the legendary sunsets. The food is creatively prepared in classic dishes. You can enjoy a cocktail or beer or wine from a large and attractive selection. And the large banquet room is outstanding for events.

**22nd Street Landing Seafood Grill and Bar**, 141-A W. 22nd Street, Cabrillo Marina, San Pedro Waterfront 310-548-4400, [www.22ndStreetRestaurant.com](http://www.22ndStreetRestaurant.com)

You've seen it in the movies and on countless television commercials and when you walk into **Godmothers Saloon**, you'll know you've found the quintessential dive bar. And it's not a put-down to call it a dive bar. Godmothers has decades of character—and so do the people who love to stop in. The bar is fully stocked with all the classics. And there's plenty of beers on tap. Just the classics. Nothing fancy about this place. You'll love it.

**Godmothers Saloon**, 302 W. 7th Street, Downtown 310-833-1589

You might say it's one happy family of restaurants. **Happy Diner**, **Happy Diner #2**, and **Happy Deli** are family-owned and a real success story. It started out with Happy Diner in Downtown San Pedro and has grown to the three locations, each offering its own special brand of good food and service. They're favorites for most any meal, especially when you want a big selection at a great price. Happy Diner is open early for breakfast until late at night for whatever meal you want. Happy Deli specializes in extraordinary breakfast and sandwiches that can't be beat. And Happy Diner #2 serves great breakfasts and lunch, open until late afternoon. Visit any of the locations and you'll see why they call them Happy.

**Happy Diner** American diner and Mexican, 617 S. Centre Street, Downtown 310-833-6799, [www.HappyDinerSP.com](http://www.HappyDinerSP.com)

**Happy Diner #2**, 1931 N. Gaffey Street, NW San Pedro

**Happy Deli**, 530 S. Gaffey Street, Downtown

If you want great Mexican food and seafood, **The Original Las Brisas** is a great destination. This local favorite has been in business for 37 years and it's been successful because Gilberto De Haro and family put their heart and soul into every dish. Every menu item has distinctive spiciness topped with subtle aftertastes that have been bringing people back on a reg-





ular basis. You'll find original recipes on this menu that bring the cuisine to life.

**The Original Las Brisas**, 1110 N. Gaffey Street, Suite D., NW San Pedro 310-833-4395, [www.TheOriginalLasBrisas.com](http://www.TheOriginalLasBrisas.com)

There is home. There is work. And then there is that ever important "third place" where you can simply chill, laugh with family and friends, be treated with respect and get that perfect dish you always crave. It's the trusted neighborhood restaurant and friendly bar. For San Pedro residents that place is **Niko's Pizzeria**. Revolving around 11 addictive signature pizzas (and endless combinations), Niko's menu is broad and aims to offer a favorite dish for everyone. Pasta, salads, appetizers, sandwiches, juicy burgers, full entrees and specialty Greek dishes come together using the best ingredients it can find in our area.

**Niko's Pizzeria**, 399 W. 6th Street, Downtown. 310-241-1400, [www.NikosPizzeria.com](http://www.NikosPizzeria.com)

If you love Italian food, you'll love **Raffaello Ristorante**. It's a place known for its pasta and huge portions. And it's known for great, attentive, fun service. Start with the complimentary plate of freshly roasted peppers and divine Italian bread. Meals come with a fresh salad that could be a main course. There are dozens of pasta combinations, along with veal, chicken, and many other traditional dishes, all prepared perfectly. Inviting environment that harkens to Italy and a large banquet room. An experienced kitchen and wait staff never disappoint.

**Raffaello Ristorante**, 400 S. Pacific Avenue, Uptown 310-514-0900, [www.RaffaelloRistorante.com](http://www.RaffaelloRistorante.com)

You like coffee? You like atmosphere? Then **Sacred Grounds** is the place you want to discover. It's located next door to the Warner Grand Theatre, and like that grand edifice to entertainment, Sacred Grounds might just take you back in time. It's got the feel of a 1960s coffee house and has become a favorite spot to meet, work, write, or just sit. There's often entertainment, sometimes impromptu performances on the stage. Sandwiches, salads, and pastries to go along with your coffee. You won't have any trouble finding Sacred Grounds; just follow your nose in the direction of the coffee beans that are being freshly roasted on the sidewalk.

**Sacred Grounds** coffee house, salads, sandwiches, 468 W. 6th Street, Downtown 310-514-0080

This vintage spot on 6th Street is a brew pub, to be sure. But **San Pedro Brewing Company** raises the bar on what that means. It always offers a tap list of at least 20 beers, ales, IPAs, blonds, and many others, with the very best brewed right in house. There's a tour of the brewing operation every Friday afternoon at 4:30 with complimentary samples. Hoppy Hour starts at 2 and runs until 6 every afternoon with a special menu and reduced prices. There's also a huge menu of creative dishes and long-time favorites ranging from appetizers to salads, sandwiches, steak, chicken, and really creative fish. Oysters on the half shell on weekends. And Saturday night brings live music to the main dining room stage. And there are rooms to host special events. Don't forget the sports focus in this great spot. Big TVs with all the popular local games and



even early morning openings for brunch for events played on international fields.

**San Pedro Brewing Company**, 331 W. 6th Street, Downtown 310-831-5663, [www.SanPedroBrewing.com](http://www.SanPedroBrewing.com)

When John Marovich was a college student working as a server at **San Pedro Café**, when the boss broke the news: the restaurant was on the market. New owner, end of job, he thought. But then the owner gave Mr. Marovich the chance to acquire the restaurant himself. And the rest is not exactly history, but a great turn of events—both for him and those who love food.

San Pedro Café is located in Uptown Pacific Avenue, right at the top of Downtown, close to the Warner Grand Theatre and shopping. And it turns out meals every day that keep its diners coming back. Monday through Wednesday, it's breakfast and lunch. Thursday through Sunday, it's also dinner. Legendary waffles. Belgian waffles, of course. There's yet more the breakfast, including chicken fried steak, chilaquiles, benedicts, and many other selections. Pleases the whole family. The sandwiches and salads score high on most anyone's palate. Dinner brings bold choices like the grilled tri tip and the Croatian-themed "Cro-Mo" (Croatian mostaccioli and sauerkraut. Or the cabbage rolls. It's where you find real San Pedro cuisine reimagined for a contemporary audience. Children's entertainment on Sunday mornings.

**San Pedro Café**, 605 S. Pacific Avenue Suite 103, Downtown 310-547-0961, [www.SPCafelnc.com](http://www.SPCafelnc.com)

Be prepared to find creative dishes at **Sebastian's Mediterranean Cuisine**, one of the newest restaurants in Downtown 7th Street Village, the international blocks of San Pedro's Historic Downtown. The specials may come from land, sea, or air, and they are always prepared in creative styles that make you want more and make you want to come back. The salads are big, there's always a selection of innovative hummus, and the entrees are perfectly prepared with excellent spices and marinades. You know there's a master chef in that kitchen when you enjoy this food. The restaurant is available for events on certain days or evenings.

**Sebastian's Mediterranean Cuisine**, 309 W. 7th Street, Downtown 424-342-9062, [www.SebastiansMC.com](http://www.SebastiansMC.com)

Sitting as it does at the point of the Palos Verdes Peninsula, and with eight great dining venues on the property, **Terranea Resort** might be expected to have a rainbow over it because its dining is certainly the pot of gold ever sought after by people who truly enjoy food and drink. **mar'sel** is set overlooking the Pacific Ocean with stunning views and offers the ideal location for an elegant dinner or seasonal Sunday brunch. Set against the scenic views of Terranea Resort, Catalina Island and the Pacific Coast, **catalina kitchen** hosts a spirited dining experience in a vibrant and modern setting. bashi celebrates culture and the history of the Palos Verdes Peninsula in a lively setting. A guest favorite for casual dining, **Nelson's** is perched directly above the ocean coves made famous by the 1950s television series Sea Hunt – from which this modern surf shack takes its name. **Solviva**, the newest restaurant on site speaks to the vibrant energy living at the core of the resort and spa, using nutrient-rich ingredients and locally and sustainably grown produce. **sea beans artisan café** serves as

a casual and delicious meeting space, conveniently located at the main Lobby courtyard. The casual full-service eatery at **cielo point** overlooks the resort's adults-only pool, providing a quiet retreat for grown-ups to enjoy a leisurely meal or iced beverage from their beach chair or private cabana as a resort guest. Plus, there's the **Lobby Bar and Grill at the Resort Pool**. Something for everyone.

**Terranea Resort** eight dining venues, 100 Terranea Way, Rancho Palos Verdes 866-802-8000, [www.Terranea.com](http://www.Terranea.com)

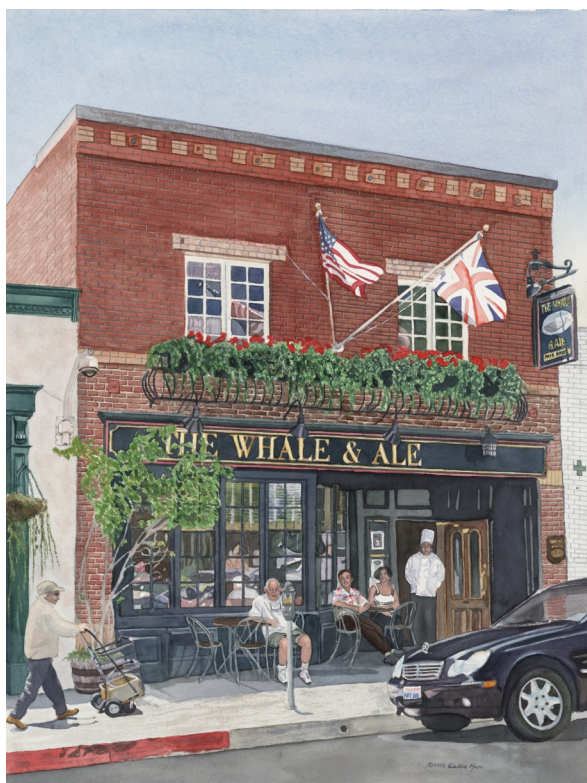
**West Coast Philly's** is San Pedro's favorite new spot for sandwiches.

Quite simply, these are the best cheesesteaks and hoagies in the area. Fresh ingredients from top suppliers, all carefully combined for creative sandwiches. All kinds of steak, from the classic cheesesteak to Tex-Mex steak and pizza steak. Wonderful submarine sandwiches. And hoagies that include an already famous meatball sandwich. So much to love.

**West Coast Philly's** cheesesteaks & hoagies 1902 S. Pacific Avenue, San Pedro. 424-264-5322, [www.WestCoastPhillys.com](http://www.WestCoastPhillys.com)

When you want a great hot dog, you want one from **Wienerschnitzel**. The company has been in business for a long time, going on 60 years, and has become the premium seller of hotdogs. More than 120 million a year. World famous chili and specials, like pastrami, throughout the year. The chain started right next door in Wilmington and the San Pedro franchise is among the best.

**Wienerschnitzel**, 230 N. Gaffey Street, San Pedro. [www.Wienerschnitzel.com](http://www.Wienerschnitzel.com)







# Best Dining

## San Pedro & the Palos Verdes Peninsula



327 West 7th Street

Downtown San Pedro

Award-winning dishes. Best in LA Best fish & chips, shepherd's pie, prime rib, and more

[www.WholeAndAle.com](http://www.WholeAndAle.com) 310 532 0363 **Entertainment:**

**Major repairs underway; please check for current status**

### Conrad's Mexican Grill

3176 W. 6th Street

Downtown

424-264-5452

[www.Conrad'sMexicanGrill.com](http://www.Conrad'sMexicanGrill.com)



Harborview Event Center

at Port MacArthur, Los Angeles Air Force Base

Hayley Strozier 310-653-8341

Patti Orbeck 310-653-8255

[www.LAFSS.com/Harborview](http://www.LAFSS.com/Harborview)



Sea and Air Terminal Berth 95 San Pedro

310.707.2440 [www.CatalinaBistro.com](http://www.CatalinaBistro.com)



SERVING WORLD FAMOUS CHILI DOGS, CORN DOGS, AND CHILI CHEESE FRIES

230 N. Gaffey Street  
San Pedro, CA 90731

(310) 831-4486

### San Pedro Café

At the top of Historic Downtown

Sandwiches, salads, entrees, and all your favorites Breakfast served all day  
605 S. Pacific Ave Ste 103 (310) 547-0961



141 West 22nd St.

On the marina

310-548-4100

[www.22ndStLandingRestaurant.com](http://www.22ndStLandingRestaurant.com)



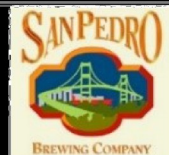
### Sacred Grounds

Great coffee • good vibes • sandwiches • salads • pastries

468 W 6th St, San Pedro

Next to the Warner Grand Theatre

(310) 514-0800



Warm, friendly neighborhood pub atmosphere. Award-winning food and beer

331 W. 6th St.

(310) 331-5668

[www.SanPedroBrewing.com](http://www.SanPedroBrewing.com)

### JOLLY BURRITO

7am-9pm EVERY DAY Fresh & Authentic

(310) 832-9196 726 S Pacific Avenue

[www.JollyBurrito.com](http://www.JollyBurrito.com)



In the Smart & Final shopping center  
28368 S. Western Avenue,  
Rancho Palos Verdes

310-833-1010, [www.TanaWinThaiLeo](http://www.TanaWinThaiLeo)

### Raffaello Ristorante

400 S. Pacific Avenue (at 4th Street)

(310) 514-0900

[www.RaffaelloRistorante.com](http://www.RaffaelloRistorante.com)

### The Original Las Brisas

Since 1982

Great Mexican Food

1110 North Gaffey Street, Suite D Northwest San Pedro

310-833-4395



810 S. Gaffey Street

310-831-0246, [www.BabouchMoroccan.com](http://www.BabouchMoroccan.com)

A dining experience

Group parties, belly dancing.

Happy Hour all night Tuesday



Mediterranean Cuisine

309 W. 7th Street

424.342.9062



399 W. 6th Street  
Downtown San Pedro

310-241-1400

[www.NikosPizzeria.com](http://www.NikosPizzeria.com)



Sandwiches, Salads, & More!

1902 S Pacific Ave

San Pedro

(424) 264-5322

[www.WestCoastPhillys.com](http://www.WestCoastPhillys.com)



Once you have it ... You'll love it!

Breakfast Served All Day!

617 S Centre St. Downtown

Happy Diner Deli 530 S. Gaffey Street

310-241-0917

Happy Diner #2 1350 N. Gaffey Street

[www.HappyDinerSIP.com](http://www.HappyDinerSIP.com)

[www.VisitSanPedro.org](http://www.VisitSanPedro.org)



# Getting Here & Getting Around

## By Automobile

**San Pedro is located at the southern end of the Harbor Freeway (Interstate 110). The freeway exits onto Gaffey Street, which runs completely through town as a major north-south thoroughfare. Interstate 110 connects to a number of freeways to the north.**

**From Long Beach and points east**, State Route 47 (Ocean Blvd.) connects to San Pedro across Terminal Island via two bridges. Exit at Harbor Blvd. off the Vincent Thomas Bridge for the Waterfront or continue on to Gaffey Street.

**From the South Bay beach cities**, take Pacific Coast Highway south to I-110 southbound into San Pedro.

### Important tips for driving in California

- You drive on the right and pass on the left
- Everyone in the vehicle must wear a seat belt
- Children under the age of 8 must be in an approved car seat or booster
- Watch the speed limit signs
- You may turn right at an intersection on a red light (unless a sign tells you not to), but must stop before proceeding
- You may not send, write, or read text messages on your mobile phone while driving. You may only use the phone to make and receive calls using a hands-free device (such as an earphone)
- It is illegal to operate a vehicle with a blood alcohol content .08 (g/100 mL) (80 micrograms) or more
- Be aware of carpool lane restrictions. Carpool lanes, also known as high occupancy vehicle lanes or diamond lanes, are designed with a diamond pattern painted on them. Most carpool lanes require the vehicle to have at least two passengers, but some require more. Also, many carpool lanes in Southern California are toll lanes and may require the presence of a transponder to pay the toll electronically. Transponders must be arranged and paid for in advance

For all the important rules of the road, read the California Driver Handbook, available at [www.DMV.gov.ca](http://www.DMV.gov.ca)

**Important information** on the Gerald Desmond Bridge Replacement Project (crossing between Terminal Island and Long Beach) and traffic issues related to construction of a new bridge is available at [www.NewGDBridge.com](http://www.NewGDBridge.com). Construction is expected to be completed sometime in 2020 and it will immediately become a stunning icon in Long Beach Harbor.

## By Air

### Long Beach Airport (LGB)

[www.LGB.org](http://www.LGB.org)

Approximate driving time is 18 minutes and distance is 11 miles. Shared van approximately \$30 each way.

### Los Angeles International Airport (LAX)

[www.flylax.com](http://www.flylax.com)

Approximately 17 miles with a driving time of 30 minutes.

### Orange County John Wayne Airport (SNA)

[www.ocair.com](http://www.ocair.com)

Approximately 34 miles (driving time 43 minutes).

Driving times will vary depending upon traffic conditions

## By Airport Shuttle

A few companies offer shuttle service to and from Southern California airports. The recent average rate to or from San Pedro to LAX by shuttle is \$30 and \$27 to or from Long Beach. (These rates are subject to change and may vary.) Your best option is Sunseeker Tours at 877-416-5460 or go online to [www.SunSeekerTours.com](http://www.SunSeekerTours.com).

## San Pedro has a Downtown Trolley

The Downtown Trolley operates between the Fanfare Fountain, Battleship Iowa, CRAFTED, Cabrillo Beach, DoubleTree Hotel, and Downtown. During cruise season it stops at the World Cruise Terminal. It generally operates noon-8 p.m. Saturday and Sunday with trolleys arriving at each stop about every 25 minutes. The entire loop route takes about an hour. Check the current trolley schedule at [www.SPTrolley.com](http://www.SPTrolley.com).

## Public Transit

Commuter Express line 142 ([www.LADOTTransit.com](http://www.LADOTTransit.com)) has direct service to the Long Beach Transit Gallery ([www.RideLBT.com](http://www.RideLBT.com)) where you can catch the A Line\* that travels to downtown Los Angeles and connects to most rail

lines that run throughout the greater Los Angeles area. You can also connect to the free Passport Buses that will take you to the Queen Mary and other places in Long Beach.

To get to the **Queen Mary** ([www.queenmary.com](http://www.queenmary.com)) from San Pedro, take the Commuter Express 142 and get off at the Long Beach Transit Gallery. Walk a few feet back to Long Beach Blvd. and cross 1st Street. Follow Long Beach Blvd. about 100 feet south (you'll see the Terrace Theatre and Performing Arts Center ahead at the end of the street). Look for the Passport Bus stop sign. Wait for the next bus. It's free. The Passport Bus will take you to Shoreline Village, a stop near the Aquarium of the Pacific, and on to the Queen Mary and Carnival Cruise Terminal.

\*NOTE: What was formerly the Metro rail **Blue Line** has undergone reconstruction and is now called the **A Line**. Currently, each rail line is designated by a color. The Blue Line was the first to be renamed. All existing MetroRail lines will be renamed in coming years (B Line, C Line, etc.), but will maintain their current color designations, as well as getting new names. Metro said the change in rail line names was necessary because of the many new lines being added and

## Bus & Rail System Overview

metro.net



confusion between similar colors that would have to be used to accommodate the new services on system maps. The Silver Line offers express bus service directly from San Pedro to Downtown Los Angeles and onward to El Monte in the San Gabriel Valley.

The Los Angeles Department of Transportation operates a **DASH bus line** around San Pedro. Dash lines operate until early evening. For the map, timetable information, and details about taking the DASH buses go to [www.ladottransit.com/dash/routes/SanPedro/sanpedro.html](http://www.ladottransit.com/dash/routes/SanPedro/sanpedro.html)

For **schedules and routes** on the Southern California bus and rail system, visit [www.metro.net](http://www.metro.net).

**These bus lines serve San Pedro:**

- Metro Route 205** between LA Waterfront and Rosa Parks Station
- Metro Route 232** between Downtown Long Beach and LAX City Bus Center via Wilmington, Harbor City, Redondo Beach, Hermosa Beach, Manhattan Beach, El Segundo
- Metro Route 246** between Pt. Fermin and Harbor Gateway Transit Center
- Metro Route 344** between Palos Verdes Drive South and Harbor Gateway Transit Center Click here for a map and timetable Metro Express Route 450 between 21st/Pacific and Downtown Los Angeles
- Metro Route 550** between Little Company of Mary Hospital (7th/ Patton) and Exposition Park
- Route 910/950X Silver Line/Silver Line Express** between Pacific/21st Street and El Monte Station (with stops in Downtown Los Angeles)

**Palos Verdes Transit Authority**

The Palos Verdes Transit Authority provides bus services around the Palos Verdes Peninsula, to San Pedro, and as far north and west as Redondo Beach. [www.palosverdes.com/pvtransit](http://www.palosverdes.com/pvtransit)





### **Lime Scooters**

Look for the green and white scooters on many corners throughout San Pedro. Use your smartphone to unlock the bike. First ride is free. You must download the app at [www.LI.me](http://www.LI.me).

### **Group Transportation**

Looking for the best group transportation? We recommend **GOGO Charters** at [www.spcvb.com/content/gogo-charters-los-angeles](http://www.spcvb.com/content/gogo-charters-los-angeles).



**Sunseeker Tours** offers unrivaled sightseeing tours and charters.

Sunseeker is perfect for weddings and family reunions. Coaches are available seating 27, 36, 47, or 56 passengers. For smaller groups, vehicles seating 14 or 20 passengers are available.

And one of the big advantages is airport arrivals and departures. Sunseeker will pick up any size group from all major airports, transferring them to any destination, or from any location to the airport.

Call Sunseeker Tours at 877-416-5460 or go online to [www.SunSeekerTours.com](http://www.SunSeekerTours.com).



# Cruise Information

## Park and Cruise Deals

The Port of Los Angeles in San Pedro is a great place to begin or end a cruise (and it's a fun, interesting, and exciting port of call, too).

There are plenty of activities to do before and after a cruise, so it's a good idea to plan on a few extra days. (And if your client is traveling to join a cruise, planning to arrive a day or more early just makes good sense—you don't have to worry about travel delays and can begin the voyage rested.)

For those driving in, the local hotels offer economical park and cruise offers that allow you to park your car at the hotel for no additional cost for the duration of the cruise and stay a night or more before and/or after your cruise.

Check with the hotels for their latest park and cruise offers:

**Terranea Resort**, 100 Terranea Way, Rancho Palos Verdes, Peninsula. 866-802-8000, [www.Terranea.com](http://www.Terranea.com)

**Best Western Plus Pedro Hotel and Suites**, 111 S. Gaffey Street, San Pedro. 310-514-1414

**Vagabond Inn**, 215 S. Gaffey Street. 310-831-8911, [www.VagabondInn.com/Vagabond-Inn-San-Pedro](http://www.VagabondInn.com/Vagabond-Inn-San-Pedro)

**DoubleTree by Hilton**, 2800 Via Cabrillo Marina San Pedro Waterfront. 310-514-3344.



Los Angeles World Cruise Terminal Overview



One of the prime advantages of sailing from San Pedro is its location, convenient to all of Southern California. The area’s many attractions are a freeway drive away or can be reached on public transportation. **Hollywood, Universal Studios, Downtown Los Angeles** and its historic districts and shopping, **Orange County** and its attractions including **Disney-land** and **Knott’s Berry Farm** are all accessible and make for great day trips.

**Catalina Island** can be reached directly on Catalina Express ([www.CatalinaExpress.com](http://www.CatalinaExpress.com)) from San Pedro.

And the **San Pedro Visitor Information Center** is glad to help you plan your tours, arrange for transportation, or for guided tours. Email the staff [info@VisitSanPedro.org](mailto:info@VisitSanPedro.org)

**Places and Services**

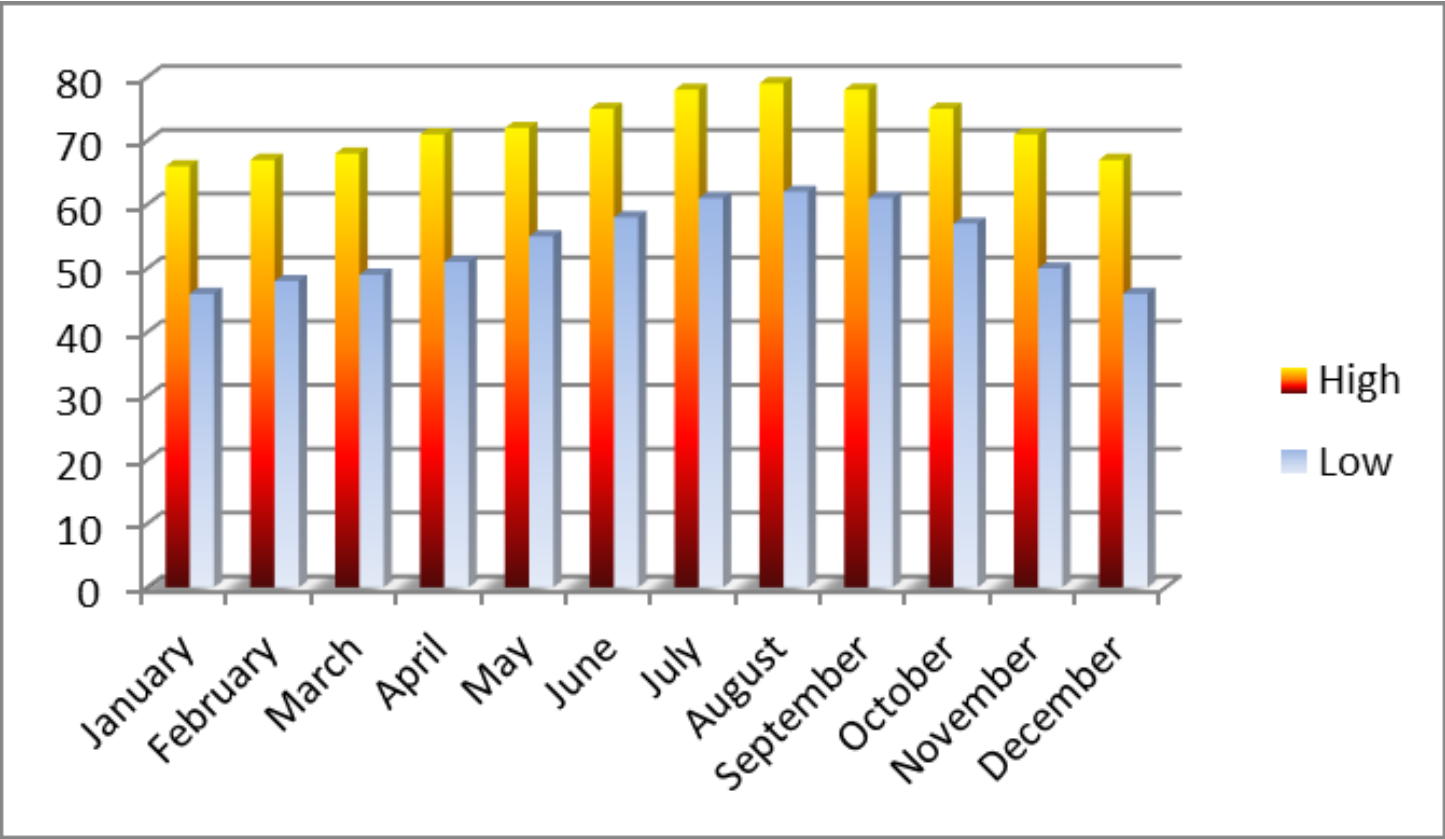
The closest U.S. **Post Office** to Downtown and the World Cruise Terminal is located at 839 S. Beacon St. Open 8 a.m. - 6 p.m. M-F and 9 a.m.-4 p.m. Saturday. (And the Post Office is in a really neat Art Deco era building, well worth taking a look at.)

There's a Wells Fargo **ATM** at the corner of 6th and Centre Streets, Downtown. And there's another 24-hour ATM in the Port Police headquarters, 330 Centre Street, between 3rd and 5th Streets.

For all the best services, shopping, dining, and more, use **The Directory** as your guide (see page XX).

**The Los Angeles World Cruise Center is managed by:**

**Ports America Cruise**  
100 Swinford Street, San Pedro, CA 90731  
310-519-2342  
[www.portsamerica.com](http://www.portsamerica.com)  
**World Cruise Center parking is managed by:**  
**Parking Concepts Inc.**  
800-540-7275  
[www.cruisecenterparking.com](http://www.cruisecenterparking.com)  
**Port of Los Angeles**  
425 South Palos Verdes Street  
San Pedro, California, USA 90731  
310-SEA-PORT (310-732-7678)  
Port Police  
310-732-3500  
**In an emergency, dial 911**



# Maps



A Terranea Resort meeting room



## Great Spot for Meetings

### Meeting and Event Spaces

**San Pedro is a lot of things. It's home to the Port of Los Angeles and the World Cruise Terminal. It's a quaint historic town. It's an outstanding restaurant town. It's one of the centers of the arts movement in Los Angeles. It's up and coming as a destination for live theater and music.**

And it's at the heart of the San Pedro Bay-Los Angeles Harbor-Palos Verdes Peninsula region.

It's also a great destination or home base for visitors who want to see all of Southern California's highlights and attractions.

We're a straight shot up the I110 (Harbor) freeway to Downtown Los Angeles and a short hop from there to Hollywood and Universal Studios. We're just about 10 miles from the Orange County line. And Long Beach is a neighbor, just two bridges away.

The weather is pretty much always wonderful in San Pedro. It's got Los Angeles' Mediterranean climate, lots of sunshine, very little rain, and the last time we had snow was ... few remember.

San Pedro is a very special place and it's a great value for your clients or attendees, whether they want a vacation, are attending a meeting, wedding, or reunion, or are traveling to Southern California for business.

Our venues and facilities are well-suited to conference-sized meetings and events.

We're also home to the Los Angeles World Cruise Terminal, the West Coast's largest. And with all there is to see and do, San Pedro is a great place to plan a day, two, or more before or after a cruise. (Here's a plus: Clients who schedule a pre-cruise getaway here avoid the stress, hassle, and disappointment of travel delays.) And cruise ships can be great meeting venues.

Catalina Island is just about an hour away on fast boats from the terminal in San Pedro.

And we're here to help you plan any trip to San Pedro. Meeting planners, travel agents, tour operators will find personal



A meeting room at the DoubleTree by Hilton San Pedro-Port of Los Angeles Hotel

attention from a staff that knows your needs and cares about making them look good to their clients.

**Not a professional event planner?** No problem. We will guide you through every step of the process of putting on a great event or meeting.

We especially welcome military reunions.

With our wealth of history, easy access, and proximity to major Southern California attractions, San Pedro is a natural location for your attendees.

But Visit San Pedro as an organization is committed to honoring our nation's veterans by providing them with the best reunions we can.

Give us a call at 310-729-9828 or email us at [info@VisitSanPedro.org](mailto:info@VisitSanPedro.org) Take a look at what you need for your meeting/reunion/event in San Pedro, the Harbor and Palos Verdes Peninsula communities, and Catalina Island. Or fill out this form with as many details as you know about the event you're planning and we will provide you with a proposal.



## Best Hotels for Events

**Best Western Plus San Pedro Hotel & Suites**, 101 N. Gaffey Street, can accommodate groups of up to 100 attendees. It offers 2,000 feet of elegant meeting and banquet space. Outside catering is required for luncheons, dinners, and receptions. 866-599-6674, [www.BestWestern.com](http://www.BestWestern.com).

**Terranea-LA's Oceanfront Resort**, 100 Terranea Way, Rancho Palos Verdes, has become well known as the premier destination for elite events and meetings. 866-802-8000, [www.Terranea.com](http://www.Terranea.com).

### Terranea Meeting Rooms



Meeting room name	Square footage	Dimensions
Abalone Cove	1,058	46'x23'
Abalone Cove 1	529	23'x23'
Abalone Cove 2	529	23'x23'
Catalina Ballroom	4,410	98'x45'
Crystal Cove	1,058	46'x23'
Crystal Cove 1	529	23'x23'
Crystal Cove 2	529	23'x23'
Golden Cove	713	31'x23'
Inspiration Point	690	30'x23'
Lunada Bay	480	24'x20'
Point Vicente	2,800	80'x35'
Point Vicente 1	910	35'x26'
Point Vicente 2	910	35'x26'
Point Vicente 3	910	35'x26'
Point Fermin	575	25'x23'
Point Prefunction	3,146	143'x22'
Rocky Point	1,320	44'x30'
Rocky Point 1	660	30'x22'
Rocky Point 2	660	30'x22'
White's Point	1,320	44'x30'
White's Point 1	660	30'x22'
White's Point 2	660	30'x22'

## Terranea Outside Space



Area name	Square footage
Catalina Lawn & Terrace	10,655
Catalina Point	1,973
Cielo Point Pool	3,500
Cottage Lawn	6,800
Cove Lawn & Terrace	6,825
Palos Verdes Meadows	22,523
Palos Verdes Terrace	13,649
Point Lawn & Terrace	7,000
Resort Pool & Lawn	10,000

## Terranea Ballrooms



Ballroom name	Square footage	Dimensions
Palos Verdes Grand Ballroom	18,048	188'x96'
Palos Verdes Ballroom 1	1,504	47'x32'
Palos Verdes Ballroom 1&2	3,008	64'x47'
Palos Verdes Ballroom 1, 2 & 3	4,512	96'x47'
Palos Verdes Ballroom 2	1,504	47'x32'
Palos Verdes Ballroom 2 & 3	3,008	64'x47'
Palos Verdes Ballroom 3	1,504	47'x32'
Palos Verdes Ballroom 4	4,512	96'x47'
Palos Verdes Ballroom 5	4,512	96'x47'
Palos Verdes Ballroom 6	1,504	47'x32'
Palos Verdes Ballroom 6 & 7	3,008	64'x47'
Palos Verdes Ballroom 6, 7, & 8	4,512	96'x47'
Palos Verdes Ballroom 7	1,504	47'x32'
Palos Verdes Ballroom 7 & 8	3,008	64'x47'
Palos Verdes Ballroom 8	1,504	47'x32'
Palos Verdes Terrace North	2,304	96'x24'
Palos VerdesPrefunction West	4,584	191'x24'
Palos VerdesPrefunction South	2,256	94'x24'
Marineland Ballroom	6,608	112'x59'
Marineland Ballroom 1	2,183	59'x37'
Marineland Ballroom 2	2,183	59'x37'
Marineland Ballroom 3	2,183	59'x37'

### **Terranea Board Rooms & Hospitality**

Room name	Square footage	Dimensions
Santa Rosa Boardroom	780	30'x26'
Santa Cruz Boardroom	729	27'x27'
Santa Barbara Boardroom	728	28'x26'
Channel Islands Suite	1,300	44'x30'
San Clemente Suite	810	30'x27'
San Nicolas Suite	825	33'x25'

**The DoubleTree by Hilton** in San Pedro offers accommodation on the marina with many amenities on site. One of the best hotels in the area for meetings and events. 310-514-3344, [www.doubletree3.hilton.com/en/hotels/california/](http://www.doubletree3.hilton.com/en/hotels/california/)



[doubletree-by-hilton-hotel-san-pedro-port-of-los-angeles-LGBSPDT/index.html](https://doubletree-by-hilton-hotel-san-pedro-port-of-los-angeles-LGBSPDT/index.html)

**Doubletree By Hilton San Pedro-Port of Los Angeles Hotel Meeting & Event Rooms**



Room name	Square footage	Dimensions
Boardroom A	299	13'x23'
Boardroom B	299	13'x23'
Bosanko	1,334	20'x46'
Catalina	550	25'x22'
Madeo Ballroom	5,022	54'x93'
Madeo Room	2,268	42'x54'
Marina	968	22'x44'
Portofino	1,020	20'x51'
Santa Rosa	594	27'x22'
Terrasini Room	3,604	53'x68'





## Catering

When looking for catering you want to be sure the food will be outstanding, the service beyond comparison, the presentation wonderful, and the price fair.

You'll find all that and more at the establishments below.

Many have on-site banquet rooms that vary in size and you're sure to find one that fits your needs. Most do catering on location.

**22nd Street Landing Seafood Grill and Bar**, 141-A W. 22nd Street, Cabrillo Marina, San Pedro Waterfront. 310-548-4400, [www.22ndStreetRestaurant.com](http://www.22ndStreetRestaurant.com)

Beautiful banquet room overlooking the marina

**Conrad's Mexican Grill**, 376 W. 6th Street, Downtown 424-264-5452, [www.ConradsMexicanGrill.com](http://www.ConradsMexicanGrill.com)

Outstanding catering on location with many vegan choices

**DoubleTree by Hilton**, 2800 Via Cabrillo Marina San Pedro Waterfront. 310-514-3344, [www.doubletree3.hilton.com/en/hotels/california/doubletree-by-hilton-hotel-san-pedro-port-of-los-angeles-LGBSPDT/index.html](http://www.doubletree3.hilton.com/en/hotels/california/doubletree-by-hilton-hotel-san-pedro-port-of-los-angeles-LGBSPDT/index.html)

On the Waterfront with large spaces for meeting and entertainment. Outstanding culinary operation

**Happy Diner/Happy Deli**, 617 S. Centre St., Downtown 310-241-0917, [www.HappyDinerSP.com](http://www.HappyDinerSP.com)

First-rate catering on location

**Harborview Event Center Fort MacArthur**, 310-652-8341, 310-653-8255, [www.LAFSS.com/Harborview](http://www.LAFSS.com/Harborview)

Wonderful full-service facility on base at Ft. MacArthur

**The Original Las Brisas**, 1110 N. Gaffey St. Ste. D, Northwest San Pedro 310-833-4395, [www.TheOriginalLasBrisas.com](http://www.TheOriginalLasBrisas.com)

Creative and traditional Mexican cuisine for more than 35 years and great catering

**Sacred Grounds** coffee house, 468 W. 6th Street, Downtown 310-514-0800, 310-897-8303

More than coffee. Lots of choices for location catering breakfast, lunch, dinner, breaks

**San Pedro Brewing Company**, 331 W. 6th St., Downtown 310-831-5663, [www.SanPedroBrewing.com](http://www.SanPedroBrewing.com)

San Pedro Brewing Company is one of Southern California's premier caterers

**Terranea Resort**, 100 Terranea Way, Rancho Palos Verdes, Peninsula 866-802-8000, [www.Terranea.com](http://www.Terranea.com)



California's beautiful oceanfront resort with the largest choice of banquet facilities

**The Whale & Ale British Restaurant Pub**, 327 W. 7th Street, Downtown 310-832-0363, [www.whaleandale.com/](http://www.whaleandale.com/)  
catering

Gourmet British food and much more; one of San Pedro's favorite caterers



A Terranea wedding

Need help or advice on finding the right caterer for your event? Give us a call at 310-729-9828 or email [events@SoCalETC.org](mailto:events@SoCalETC.org).



## Group tours

Whatever the interest, there's a tour available of the San Pedro area and beyond. Take a look at this sampling of the tours we offer for groups of 10 and more. (Advance arrangements and pre-payment are required.)

We make it very easy for event organizers to choose from our packaged tours, which include all elements necessary for a great attendee experience, including expert guides, transportation, and meals. Or we can arrange any individual elements of the tour program as necessary.



And don't worry if your group has more participants than will fit on a coach (typically 50). Our expert guides are all equally qualified to provide equally excellent tours on multiple simultaneous coaches.

### Historic Los Angeles Harbor

2½ hours

#### Harborview Event Center

—Photos courtesy of Harborview Event Center and WANT Photography



Hundreds of visitors and reunion attendees have taken this popular tour.

Discover the fascinating history of Los Angeles Harbor with the guidance of an area expert. Sights include the Vincent Thomas Bridge, Point Fermin Lighthouse, Angel's Gate Park, the Marine Mammal Care Center, and historic Downtown San Pedro.

The tour begins with an orientation and drive across Vincent Thomas Bridge, a graceful span connecting San Pedro with Terminal Island with the opportunity to snap a bird's eye view of the vast harbor complex (weather permitting).

Make your first stop at Angel's Gate Park, at the top of the Palos Verdes Peninsula. A part of Fort MacArthur Army Base until the 1970s, the park offers excellent views of the Pacific. Have a look at the Korean Friendship Bell, a huge 17-ton replica of the Bronze Bell of Korean King Songdok, originally cast in 771 AD. The park is also home to the Marine Mammal Care Center and Oiled Bird Care Center, where injured aquatic creatures are nursed back to health and returned to the sea. We will make a short visit to the sea lions and other ocean life recovering at the Marine Mammal Care Center.

Drive on to nearby Point Fermin Lighthouse, the oldest navigational aid in San Pedro Bay. Put in operation in 1874, the handsome gabled building and lighthouse tower were first operated by two sisters, Mary and Ella Smith. A walk around the grounds provides very good photo ops.

Then it's onward to the SS Lane Victory, a functioning World War II era Victory steamship that was built in San Pedro. Learn about the history of these vessels and the heroic commitment of merchant seafarers, who suffered more casualties in WWII than any other service element.

Make your way close-by to the harbor's main channel for a visit to the current fishing fleet and learn about the history of commercial fishing in San Pedro from your expert guide.

Next, pay a visit to the heart of the Historic District for lunch, a snack, shopping, and strolling in the Arts Culture Entertainment District, home to dozens of art galleries, fine and funky shops, and much more.

And remember: Every tour can be customized to your groups needs and interests

### **Harbor Area Military History Tour**

4 hours

The Los Angeles Harbor area has a military history dating back to before the Civil War and we'll explore much of it in this tour.

We start at Drum Barracks in Wilmington, home of the western Camel Corps during the Civil War. You'll see the restored junior officers' quarters and learn about California during the Civil War.

Then we'll head up Banning Boulevard to the Banning House Museum, the restored home of Phinneas Banning, founder of the port at Wilmington and a brigadier general in the Union Army during the Civil War. He built this mansion to show his confidence that the Union would be preserved after the war.

Then we'll go to the Outer Harbor for a visit to SS Lane Victory, an operating World War II era Victory ship that was built in San Pedro and served through the Vietnam war. We'll get a special tour of this vessel and learn about military ship construction in Los Angeles Harbor.

The tour then goes past Ft. MacArthur's Lower Reservation, today part of Los Angeles Air Force Base, but built as a coastal defense installation, and on to its former Upper Reservation. Now Angels Gate Park, the Upper Reservation still has many vintage military buildings from its days as an army fort. And we'll see where the big coastal guns were located. (Weekend tours include a stop at the Ft. MacArthur Museum, built into the cliffs in the former arsenal of the fort.) Then we'll travel next door to the Korean Bell of Friendship for great photo opportunities and to learn about the connections between San Pedro and Korea.

The tour can optionally include lunch in the middle of the tour or at the end. Or it can include dinner and a speaker at the end if the tour starts later in the day.

### **San Pedro Arts Tour**

2 ½ hours

Available Friday, Saturday, Sunday only

San Pedro is a town of the arts and a town of artists. This tour is a broad survey of the art and artists of the town.

We start at CRAFTED at the Port of Los Angeles, the year-round craft marketplace, where we'll see the works of scores of artisan works and try some hands-on activities. A representative of the San Pedro Art Association will give us an overview of the working artists' scene in the area.

Then we'll travel to the Korean Bell of Friendship for great photo opportunities overlooking the Pacific Ocean and to



# Request for Proposal

416 W. 6th Street u San Pedro, CA 90731 u 310-729-9828 u info@VisitSanPedro.org u www.VisitSanPedro.org

<b>The name of the <u>overall</u> event</b> Keep it brief and descriptive. There will be opportunities soon in this form to include the elements that make up the event.	
<b>Official Name of Event</b>	
<b>Event description</b> Please provide us with details on each activity, the setting, the planning and production personnel and the audience	
<b>Sponsoring Company / Organization</b>	
<b>Organization Contact Person</b>	
<b>Contact Person Phone</b>	
<b>Contact Person Email</b>	
<b>Public Start Date of Event</b> The date you would like as the official start date of your event	
<b>Public End Date of Event</b> The last day of public events and last day of public access to official venue	
<b>Time Event Begins</b> The official start time of the event. The drop dead time when people walk through the doors and want to be engaged in something related to the event	
<b>Time Event Ends</b>	
<b>Public End Time of Event</b>	
<b>Total Meeting / Event / Breakout Rooms Required</b>	
<b>Banquet Capacity Required</b> (persons)	
<b>Set up days required</b>	

<b>Attendees-Total Expected</b> Hotel Rooms Requested		
0	1-9	10-15
16-20	21-30	31-50
51-75	76-100	101-125
126-150	151-175	176-200
201-225	226-250	251-275
276-300	301+	
<b>Tear down days required</b>		

<b>Special notes/requests/ instructions</b>	
---	--

<b>Services required/desired</b>		
City permits	Entertainment	Group transportation
Installation & dismantle services	Musicians	Offsite dining
Online ticket sales	Onsite catering	Registration services
Security	Street closures	Team San Pedro volunteers to help with operations and attendee relations
Temporary liquor, beer & wine, or combined license <small>(required to serve alcohol in a location without a permanent permit)</small>	Tours	
Other <small>(please specify)</small>		

<b>Approximate age range of primary audience</b>	
--	--

learn about the Korean art-  
Pedro to construct and deco-  
ion—and how they recently  
hand.

The tour will then head to  
heart of the Waterfront Arts  
Original Parkhurst Gallery.  
late portrait and landscape  
this gallery is a vibrant place  
masters, as well as paintings  
on buying art—what to look

Depending on the season,  
ty to visit the National Wa-  
see one of its two annual

And there will be time to  
trict and find some of the

Lunch during or after the  
or discussion after the tour

### **Los Angeles Harbor**

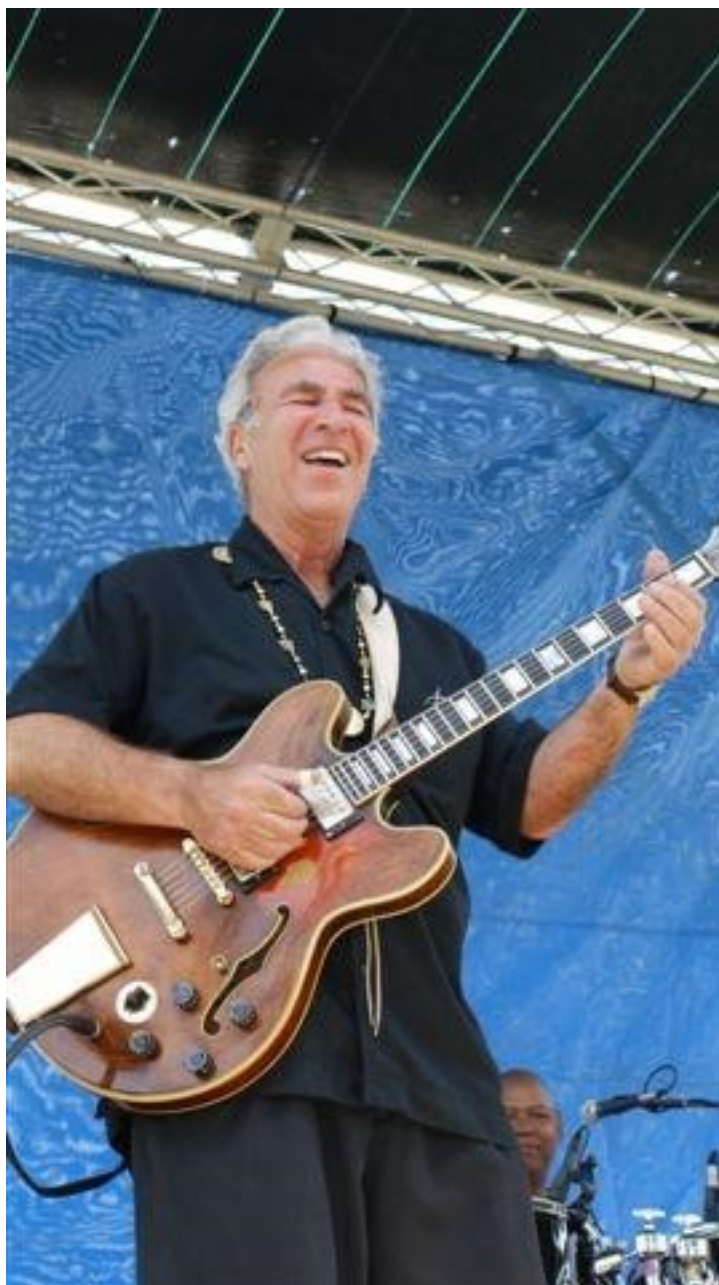
2 ½ hours

This tour focuses on the  
pecially sea life, in and  
bor area.

The tour starts at the Ca-  
with an orientation and over-  
from the aquarium. We'll  
hibits, then we'll take a tide-  
life near the shore.

We'll then head up to the  
ter in Angels Gate Park, a  
and injured pinnipeds, and  
there, especially with sea

The tour will then go next  
Friendship for great photo  
ic Ocean and a talk by a nat-



sans who traveled to San  
rate the bell and its pavil-  
restored the decoration by

Downtown San Pedro, the  
District, for a visit to the  
Founded by the renowned  
painter Violet Parkhurst,  
with lessons from painting  
for sale. We'll get some tips  
for and how to judge it.

we may have the opportuni-  
tercolor Society Gallery to  
exhibitions.

stroll through the arts dis-  
many galleries.

tour or dinner and a speaker  
can be arranged.

### **Wildlife Tour**

many forms of wildlife, es-  
around the Los Angeles Har-

brillo Marine Aquarium  
view by a trained naturalist  
have a chance to see the ex-  
pool walk to learn about the

Marine Mammal Care Cen-  
facility that cares for sick  
see the work that goes on  
lions.

door to the Korean Bell of  
opportunities over the Pacif-  
uralist about the kinds of

We have a list of the best local musicians available to per-  
form at your events. Go to

**[www.VisitSanPedro.org](http://www.VisitSanPedro.org)**



wildlife that roam the coastal area, including fox, raccoons, coyotes, and opossum, that are not often seen.

As an option between the end of December and the middle of April, the tour can include a whale watching voyage. (This extends the tour time to about 5 hours.)

### Custom Tours

We can create customized special interest tours for any group of 10 or more. Visit San Pedro can arrange, for example, culinary and gourmet tours with an opportunity to look behind the scenes, beer and brewing tours with stops at San Pedro's vibrant, innovative, and growing craft breweries, or a tour especially designed for any interest your group might have.

**For more information and to book a tour for your group, call Visit San Pedro at 310-729-9828 or email us at [tours@spcvb.com](mailto:tours@spcvb.com)**

### Recommended Transportation Providers

**PARKHURST**  
*Galleries, Inc.*

We recommend **GOGO Charters Los Angeles** for your group transportation

GOGO Charters Los Angeles is your best choice for group transportation. Getting around California has never been easier. With GOGO Charters, you will be provided with a high-quality, luxury shuttle that can take you

to any city that you desire. From San Pedro to Los Angeles, our transportation services can take you and your group on a safe, efficient, and affordable journey.

**Ms. Alexander**

Call the GOGO Charters 24/7 reservation team at 323-373-3085  
[www.GOGOCharters.com/los-angeles-charter-bus](http://www.GOGOCharters.com/los-angeles-charter-bus)  
[info@gogocharters.com](mailto:info@gogocharters.com)

**Sunseeker Tours offers sightseeing tours and** charters. Coaches are available seating 27, 36, 47, or 56 passengers. For smaller groups, vehicles seating 14 or 20 passengers are available.

**Urban Feet**  **Skate**  
Shoes & Clothing Equipment

Call Sunseeker Tours at 877-416-5460 or go online to [www.SunSeekerTours.com](http://www.SunSeekerTours.com).

**Rok 'n' Ell**  
*Baby Boutique & More!*

## Weddings

Overlooking the Pacific Ocean. At a yacht club with sailboats bobbing joyfully in the water. Along a rustic hillside. In a church. Just about wherever you might dream of your perfect wedding and wonderful

reception, San Pedro offers a great spot.

From pre-wedding preparations to the honeymoon, the Visit San Pedro is ready to help you at every step of your planning.

We have great venues for weddings and receptions, hotels to fit your budget, and all of the services you'll need—from flowers and tux rentals to wedding dress makers, limousines, and more.

### Our Featured Providers

#### Hotels and Restaurants

**Los Angeles Yacht Club** overlooks Cabrillo Marina with an unparalleled view. Great facilities, outstanding catering and service. 285 Whalers Walk, Cabrillo Marina 310-831-1203, [www.LAYC.org](http://www.LAYC.org)

**Terranea-LA's Oceanfront Resort** is a favorite for weddings—and no wonder. Terranea overlooks

the Pacific Ocean on the Palos Verdes Peninsula with hotel, dining, wedding sites all in one location. 100 Terranea Way, Rancho Palos Verdes. 310-265-2800, [www.Terranea.com](http://www.Terranea.com)

**Best Western Plus San Pedro Hotel & Suites** looks like a French chateau nestled into the side of the hill. Inside it offers European elegance in its new decor throughout. The rooms are the largest in San Pedro and offer stunning vistas of the harbor and beyond. Continental breakfast is offered. 111 S. Gaffey Street. 866-599-6674, [www.book.bestwestern.com/bestwestern/US/CA/San-Pedro-hotels/BEST-WES...](http://www.book.bestwestern.com/bestwestern/US/CA/San-Pedro-hotels/BEST-WES...)

**Harborview Event Center** offers exclusive use of the entire facility on the beautiful and historic grounds of Fort MacArthur. Conveniently located near It. Farm in on the Peninsula. For information, call Hayley Strozier at 310-653-8341, [Hayley.Strozier@us.af.mil](mailto:Hayley.Strozier@us.af.mil) or Patti Orbeck at 310-653-8255, [HarborviewCatering@gmail.com](mailto:HarborviewCatering@gmail.com) See photos at [www.LAFSS.com/Harborview](http://www.LAFSS.com/Harborview)

**DoubleTree by Hilton San Pedro-Port of Los Angeles** has long been known as one of the area's premier wedding venues. (It's also a great place to honeymoon!) 2800 Via Cabrillo Marina, Waterfront. 310-514-3344, [www.doubletree3.hilton.com/en/hotels/california/doubletree-by-hilton-hotel-san-pedro-port-of-los-angeles-LGBSPDT/index.html](http://www.doubletree3.hilton.com/en/hotels/california/doubletree-by-hilton-hotel-san-pedro-port-of-los-angeles-LGBSPDT/index.html)

**M/Y Mauretania** is perhaps the most elegant and interesting spot for a wedding, vow renewal, bachelor or bachelorette party: the vintage luxury motor yacht. Get information at [www.motoryachtmauretania.com](http://www.motoryachtmauretania.com).

#### Decorations

**Royal Elegance Designs** offers balloon decorations, drapery and lighting, chair covers, sash, and table linens. Call Cecilia Chavez at 424-477-4090, [www.royalelegancedesigns.homestead.com](http://www.royalelegancedesigns.homestead.com).



## Reunions

Reunions are a passion for Visit San Pedro, the community's convention and visitor organization.

We want our veterans and other groups coming to San Pedro to get the service, attention, and value they deserve. And we are proud to offer the highest quality reunion packages to visiting groups at reasonable cost.

And, with its rich history and military heritage, the San Pedro area is a perfect destination for most any reunion.

Visit San Pedro's Reunion packages are designed with flexibility to accommodate the needs, interests, and budgets of each group and its attendees. And we include many services on a complimentary basis when tours are arranged through us.

For the convenience of reunion planners, we have designed our packages in a modular format, meaning that you choose only the services and activities that your group wants. And for each group we prepare a custom proposal that details the costs and what will be included, all based on your specifications.

## Registration Services

Visit San Pedro can provide both advance and on-site registration services. These services include:

- Availability of online, mail, and phone-in registration, both for the reunion and for individual activities and meals
- Registration form development and printing
- Mailing services
- Preparation and printing of personalized named badges (that can include group emblems or logos)
- Registration lists (including special customized lists as required by the organizer)
- On-site registration and badge distribution



## Attendee Services

- Visit San Pedro can negotiate the best available hotel rates for your attendees and provide direct reservation links and numbers for convenient accommodation reservations
- Visit San Pedro makes available members of Team San Pedro, its specially-trained visitor information specialists to assist attendees
- Restaurant reservations
- Attendee gift/welcome bags

## Tour Services

Visit San Pedro organizes a tour program especially suited for each reunion group's interests. Some of the most popular tours are:

- San Pedro and Harbor area history tour
  - San Pedro and Harbor area military history tour
  - Catalina Island voyage, lunch, and tour
  - Mission San Juan Capistrano tour
  - Nixon Library tour
  - Reagan Library tour
  - Prime rib harbor dinner cruise around the Queen Mary
- And we have many more to choose from and will gladly cus-

**Community mural project on 25th Street created under the leadership of local artist Julie Bender.**

—Photo by Mark Radmilovich





tom design tours that suit your group's needs and interests

### **Event and Meal Services**

- Visit San Pedro is your key contact for working with hotels, restaurants, and other venues for all of your meals, memorial services, and other special events. We can help negotiate the best rates for all your needs
- We work with a number of venues to arrange a memorable and moving memorial service, whether it's overlooking the Pacific Ocean, on a storied Victory ship, in a chapel or church, or any appropriate place, we can arrange what you need
- We are always on hand to help coordinate services and make sure everything goes smoothly

### **Transportation Services**

- Visit San Pedro can handle all of your transportation needs, no matter what size the group
- Short-, middle-, and long-distance group transfers
- Airport transfers
- Shopping, sightseeing, and dining transfers (including vans and taxis—whatever is needed)

And we do whatever it takes to make sure your reunion in San Pedro is the best you've ever had. Our personalized service, experience, attention to detail, and commitment to showing our appreciation for your service means we help you create memorable, great reunions.

**Contact us today for a proposal on your group's specific needs, interests, and dates. We'll be pleased to prepare a complete proposal for your consideration. Call 310-729-9828, email at [info@VisitSanPedro.org](mailto:info@VisitSanPedro.org), or go to our website at [www.VisitSanPedro.org](http://www.VisitSanPedro.org) and fill out the event information form.**



## Shopping

**From the old town feel of historic 6th Street to the international flavor of 7th Street and streets between and beyond, San Pedro has shopping and more that will entice everyone.**

Inside the Streamline Moderne/ Art Deco building at 731-741 S. Pacific Avenue is **It's Showtime** and much more. Some say it's like a museum. Others say it's a time capsule of the elegant. You'll find authentic film and transportation memorabilia and more. Plus, there's the Speakeasy Cabaret downstairs, along with galleries, the Chef's Studio Penthouse Demonstration Kitchen. Just go see it.

**CRAFTED at the Port of Los Angeles** is an all-year craft marketplace—and a whole lot more. And it's conveniently located near the LA Waterfront with free parking and admission. It's at the corner of 22nd Street and Harbor Blvd. near the San Pedro Waterfront.

**Parkhurst Galleries Downtown** features some of the world's finest art. And you can learn to Paint Like the Masters there, too, at 439 W. 6th Street, Downtown.

**Our Creations** is your spot for art and craft supplies, Dia de Los Muertos items, and much more. Painting classes, too. At 416 W. 6th Street, Downtown.

**Ms. Alexander** is a unique women's clothing store. She offers clothes for all ages, purses, jewelry, and more at 479 W. 6th Street in the Arcade Building

**Bringelson Jewelers** at 461 6th Street in the Brown Bros. Building has lovely selections of the highest quality gems, pearls, and more. Watch and clock repair, too.

**Urban Feet & Skate**, 329 W. 6th Street in Downtown San Pedro has all your activewear needs, with an emphasis on one of California's favorite sports: skateboarding. Drop in and see the selection. You can reach the helpful staff by phone at 310-832-9364 or go online to [www.UrbanFeetAndSkate.net](http://www.UrbanFeetAndSkate.net).

Along **Western Avenue** you'll find the restaurants, shopping, and services you know and trust

At **Weymouth Corners** you'll find a quaint small downtown shopping village that you'll fall in love with. It's home to **Rok 'n' Ell Baby Boutique and More!** This wonderful shop is at 1438 W 8th Street, Weymouth Corners. 310-832-4145, [www.RoknEllBaby.com](http://www.RoknEllBaby.com). You'll not only find everything you need for babies, infants, and even toddlers, but lots for the family. Great gifts.



## A Town of the Arts

Wherever you turn, San Pedro is a community with art and culture. Our Downtown area is the main arts district with galleries and studios.

We are fortunate to have the **San Pedro Art Association**, established in 1936 and more vital than ever. The association has galleries at **CRAFTED at the Port of Los Angeles** and presents shows and events at other locations throughout the community. SPAA's members are some of the area's finest artists and you can be confident when you purchase their art or take their classes that you are working with outstanding individuals who care about their community, their art, and your enjoyment. You can find more information at [www.SanPedroArt.org](http://www.SanPedroArt.org).

On the first Thursday of every month the Arts District opens its doors for exhibitions, entertainment and refreshments for its Art Walk. Beginning around 6 p.m., the galleries and studios are open, shops and restaurants have special offers, and there's entertainment all around. [www.1stThursday.com](http://www.1stThursday.com).

**San Pedro Waterfront Arts District** supports artists and is responsible for lots of great public art around town. Take a look at its website at [www.LAWaterfrontArtsDistrict.com](http://www.LAWaterfrontArtsDistrict.com)—the then take a look at all it has done to beautify San Pedro and give artists great exposure.

**Warner Grand Theatre** is the centerpiece of Downtown and San Pedro arts and culture. This Art Deco era movie theater was opened in 1931 by Jack Warner who called it "the palace of your dreams." The Warner Grand hosts a wide range of arts and cultural events from films to speeches, stage plays to music. [www.WarnerGrand.org](http://www.WarnerGrand.org).

**San Pedro is home to many wonderful and talented artists**

**Parkhurst Galleries** not only presents the work of some of the world's most famous painters for sale, but also offers its Painting With the Masters classes. These classes truly bring out the talent of anyone who is interested in painting.

**Our Creations** at 416 W. 6th Street is the place for painting classes and art supplies, everything you need for crafts, weddings, holidays, and more.

**Downtown Books & Art Gallery** at 414 W. 6th Street in Downtown San Pedro has an inventory of very collectible new and antique books. The gallery has a new show every month. It offers the highest quality picture framing with many choices of styles and materials. The phone number is 818-731-1158 and the website is [www.DTBooksArt.com](http://www.DTBooksArt.com).

San Pedro enjoys live professional theater all year long. Little Fish Theatre presents locally produced live comedy and drama with a full schedule. A real drawing card is the theater's small size. It only seats about 60, so everyone is close to the stage action. Many professional actors love Little Fish for the groundbreaking plays it presents. It can be daring, it can be funny. It is always entertaining. Little Fish Theatre is 777 Centre Street, Downtown. The phone is 310-512-6030 and its website is at [www.LittleFishTheatre.org](http://www.LittleFishTheatre.org).

And Shakespeare by the Sea is a long running festival that presents the Bard's plays in public parks and other locations throughout Southern California. It started in San Pedro and continues regular performances in Pt. Fermin Park and at other spots, even while it has expanded as far away as Orange County. And you'll find lots of locations throughout the South Bay for these wonderful shows. Check it out online at [www.ShakespeareByTheSea.org](http://www.ShakespeareByTheSea.org).

If you like music, you'll love the **Golden State Pops Orchestra**. Performing in the historic Art Deco era Warner Grand Theatre, the orchestra presents a series of concerts that inspire and entertain with world-class musicians performing. Check upcoming performances at [www.GSPO.com](http://www.GSPO.com).

Arts and entertainment aren't limited to Downtown. The San Pedro area is home to many remarkable artists.

And **Mario Mirkovich** is known as a real master, especially for his paintings that capture the beauty of the area. He also offers painting classes. Mario's Art Gallery is 2438 S. Western Avenue, Peninsula. The phone is 310-548-9077 and online at [www.MarioMirkovichFineArt.com](http://www.MarioMirkovichFineArt.com).

**National Watercolor Society** showcases the very best in its gallery at 915 S. Pacific Avenue, Uptown Pacific Avenue. Call 310-831-1099 or visit [www.NationalWatercolorSociety.org](http://www.NationalWatercolorSociety.org).

**You'll find lots throughout San Pedro and the Peninsula area**

And up the hill is the **Palos Verdes Art Center**, 5504 W. Crestridge in Rancho Palos Verdes, offering a variety of exhibitions and classes. Check its schedule online at [www.PVArtCenter.org](http://www.PVArtCenter.org).

**Marymount California University** offers an extensive program of cultural arts on its Oceanview Campus. Marymount California University 30800 Palos Verdes Drive East, Rancho Palos Verdes, Peninsula 310-303-7223, [www.MarymountCalifornia.edu](http://www.MarymountCalifornia.edu).

The **Norris Theatre** hosts a wide range of stage productions, musical shows, and a variety of classes. It hosts many national touring shows. Check out the schedule at [www.PalosVerdesPerformingArts.com](http://www.PalosVerdesPerformingArts.com).

**San** Pedro boasts not just one film festival, but two

The Los Angeles Harbor International Film Festival brings new works, documentaries, and classic films to Downtown San Pedro every spring. Information is available at [www.LAHarborFilmFest.com](http://www.LAHarborFilmFest.com).

And the **San Pedro International Film Festival** is the town's premier festival and focuses on new and emerging works every fall. The festival includes a range of seminars, as well. It also produces programming throughout the year. Get information at [www.SPIFFest.org](http://www.SPIFFest.org).

One of the nation's leading film festivals is held just across the channel on Catalina Island. The **Catalina Film Festival** is a star-studded event that always attracts an interesting audience with more than 100 films screened in an important competition. Information is available at [www.CatalinaFilm.org](http://www.CatalinaFilm.org).

The **Port of Los Angeles** has turned the Los Angeles Waterfront in San Pedro into a beautiful place--at a significant investment. All along the Promenade that traverses the Main Channel you'll see great pieces of public art that reflect the cultures of Los Angeles and the world. Many are educational pieces about the history of the harbor. Crowning the Promenade is the Fanfare Fountain at the World Cruise Center that presents choreographed light, sound, and water shows. At the other end of the Channel is the SP Slip, home to the Ghost Fish sculpture, along with interpretive signage about life on the docks.

And San Pedro, Wilmington, the Palos Verdes Peninsula, and Catalina Island are all favorite locations for film, television, and commercial production. You can find a list of many of the productions on [www.VisitSanPedro.org](http://www.VisitSanPedro.org). Also check there for the updated online Calendar of Events for performances and activities.

## Annual and Special Events

**San Pedro hosts a range of special events each year. Its location on the Pacific Ocean at San Pedro Bay makes it especially well-suited for nautical and maritime events. Listed below are the events that typically happen each year and the usual time frames for them.**

Check the Master Calendar and the Interactive Online Calendar at [www.VisitSanPedro.org](http://www.VisitSanPedro.org) for the latest information.

### *Winter*

#### **New Year's Eve Bell Ringing**

December 31/January 1

Ring in the New Year with the sounding of the Korean Friendship Bell at Angel's Gate Park. 310-548-7705

#### **Polar Bear New Year's Swim**

New Year's Day

Join the fun and show you're tough by taking part in this legendary morning swim at Cabrillo Beach.

[www.CabrilloBeachPolarBears.com](http://www.CabrilloBeachPolarBears.com)

#### **Whale Festival**

Late January

Kick off the whale  
the Cabrillo Marine

watching season at  
Aquarium.



[www.cabrillomarineaquarium.org](http://www.cabrillomarineaquarium.org)

### **Great Los Angeles Air Raid**

February

Recreation of World War II camp show with attack by enemy aircraft commemorating an actual event. Held at Ft. MacArthur Museum, Angel's Gate Park. [www.FtMac.org](http://www.FtMac.org)

### **Spring**

### **Los Angeles Harbor International Film Festival**

Late Winter/Early Spring

The LA Harbor International Film Festival showcases films and videos at the historic Warner Grand Theatre, usually a movie from a book, a foreign film, a classic movie on Saturday night, and a series of documentaries on Sunday.

[www.LAHarborFilmFest.com](http://www.LAHarborFilmFest.com)

### **Grand Grunion Gala**

Mid- to Late Spring

Fun gala event to support Cabrillo Marine Aquarium. [www.cabrillomarineaquarium.org](http://www.cabrillomarineaquarium.org)

### **Summer**

### **Cars & Stripes Forever**

Last Friday in June or first Friday in July Early in July some of the most customized and some of the best restored vintage cars make their way onto the Promenade along the Waterfront in San Pedro for the Cars & Stripes Show, presented by the Port of Los Angeles.

### **Fourth of July Events**

#### **Ringling of Korean Bell of Friendship**

One of only a few days when the bell rings. Korean Bell of Friendship, Angels Gate Park.

#### **John Olguin Fireworks Show**

Big fireworks show at Cabrillo Beach. Full day of activities precedes.

#### **Old Ft. MacArthur Days**

First weekend after

One of the largest and living history Reenactors from eve-cupy Angel's Gate July at historic Ft. [www.FtMac.org](http://www.FtMac.org) Arthur Days was re-one-day open house on history from the fort's active service.)

#### **Shakespeare by**

Early summer

Nine weeks of free tions at locations ro and the South Bay.



Fourth of July military reenactment events in the nation. ry era in history oc-Park. Held every MacArthur. (Note: Old Ft. Mac-placed in 2019 with a exclusively focused years covered by the

#### **the Sea**

Shakespeare produc-throughout San Ped-



[www.ShakespeareByTheSea.org](http://www.ShakespeareByTheSea.org)

### **Fleet Week**

Labor Day weekend

Navy vessels on display and activities for sailors and citizens.

### **San Pedro Festival of Art**

Early September

Originally the TriArt Festival. Visual arts, dance, and music. [www.TriArtFestival.com](http://www.TriArtFestival.com)

### **San Pedro International Film Festival**

#### **Fall**

A full-fledged festival of innovative international films. Takes place in a variety of venues throughout San Pedro.

[www.SPIFFest.org](http://www.SPIFFest.org)

### **Dia de Los Muertos Festival**

Last Sunday Dia de Los Muertos

A festival celebrating the traditions of Dia de Los Muertos. Food stands, crafts, entertainment. Held in Downtown San Pedro. [www.SanPedroDayOfTheDead.com](http://www.SanPedroDayOfTheDead.com)

### **San Pedro Holiday Boat Parade**

First or second Saturday evening in December

The fun begins at Banning's Landing in Wilmington and the decorated boats traverse the Main Channel of the Port of Los Angeles.

### **San Pedro Holiday Parade**

First Sunday in December

The parade, sponsored by the San Pedro Chamber of Commerce, makes its way up Pacific Avenue to Sixth Street and through the Historic Downtown. Always lots of fun.

[www.SanPedroChamber.com](http://www.SanPedroChamber.com)

#### **All Year**

### **First Thursday Art Walks**

The first Thursday of every month

The First Thursday of every month is when the artists really come out and shine in San Pedro. Galleries and studios are open, shops have special offers, refreshments are found throughout town, restaurants bring in special entertainment, and the food trucks arrive. [www.1stthursday.com](http://www.1stthursday.com) bring in special entertainment, and the food trucks arrive. [www.1stThursday.com](http://www.1stThursday.com).

**Note:** Events may change from their usual time frame. Check the Master Calendar and the Interactive Online Calendar on [www.VisitSanPedro.org](http://www.VisitSanPedro.org) for updated information.



## Recreation

The San Pedro, Palos Verdes Peninsula, and Catalina region offers a range of recreational opportunities. Whether you're looking for hands-on or something more sedate, you'll find it here.

We've got many outstanding golf courses

There's sailing with the Los Angeles Yacht Club and Buccaneer Yacht Club and on LA's official tall ships

### Take a harbor cruise

Spirit Cruises is best on the Waterfront (the only harbor cruise we recommend). Schedule and promotions available at [www.SpiritMarine.com](http://www.SpiritMarine.com)

### Go to the beach

San Pedro has two outstanding beaches, each with its own natural features and character.

**Cabrillo Beach** has a long expanse of calm, sandy shoreline, protected by the Los Angeles Harbor breakwater. But move just outside the breakwater and you'll find open waters that are renowned for their great windsurfing and other water sports. This area is known as Hurricane Gulch because of its strong (but not really hurricane strength) winds.

This close-in beach has picnic facilities available in grassy areas under shady trees. At the end of the harbor entrance breakwater is Angel's Gate Lighthouse.

This is also home to the Cabrillo Beach Bathhouse, a vintage 1932 example of the kinds of bathhouses that were frequently found along the California coastline. The bathhouse was using for boating events during the 1932 Olympic Games, served as a museum, and has been extensively restored in recent years. Its upstairs ballroom, outdoor patio arcade, and first floor gallery are available for events.

Cabrillo Beach is also home to the **Cabrillo Beach Marine Aquarium**, a well regarded and very active aquarium and marine research facility. The aquarium offers an extensive regular series of educational activities and programs for all ages.

The facility, 21,000 square feet in size and designed by architect Frank Gehry, houses the largest collection of Southern California marine life on display in the world, an outdoor tidepool touch tank, teaching laboratory, auditorium, research lab, and gift shop. The Exploration Center and the Aquatic Nursery, as well as a new 3,000 square foot Virginia Reid Moore Marine Research Library, and the S. Mark Taper Courtyard were added more recently.

Parking is available onsite at the beach, free for the first 20 minutes, \$1 an hour thereafter up to maximum of \$9 per day.

#### **Cabrillo Beach**

City of Los Angeles Department of Recreation and Parks  
3720 Stephen M. White Dr., San Pedro, CA 90731  
310-548-2909

#### **Cabrillo Beach Bathhouse**

3800 Stephen M. White Drive  
San Pedro, CA 90731  
310-548-7554

#### **Cabrillo Beach Marine Aquarium**

3720 Stephen M. White Drive  
San Pedro, CA 90731  
310-548-7562  
[www.CabrilloMarineAquarium.org](http://www.CabrilloMarineAquarium.org)

**White Point and Royal Palms County Beaches**, located at 1799 Paseo del Mar, is a Los Angeles County park with





picnic areas. The beaches are rocky with many tide pools along the shore.  
The parking area is located at the bottom of a steep bluff and varies from \$2 to \$10 per day.

#### **White Point Beach**

1955 S Paseo Del Mar San Pedro, CA 90731  
310-519-1751

#### **Physical issue limiting your recreation?**

Dr. Ja'nae Brown, PT, DPT is San Pedro's outstanding physical therapist who eliminates your pain and restores function to your life.

If you're in pain or struggling with a daily activity, hobby, or sport that you love to do, she can help.

Her treatment is based on one-on-one care and her goal is to restore your function so you can restore your life.

Her offices are located in Absolute Best whole life warehouse.

#### **Dr. Ja'nae Brown/Physical Therapy San Pedro**

Physical Therapist  
643 W. 6th Street, San Pedro  
310-548-5984, [www.DRJanaeBrownPT.com](http://www.DRJanaeBrownPT.com)  
[www.facebook.com/PTsanpedro](http://www.facebook.com/PTsanpedro)

#### **Show your children how to build a railroad**

Because everybody loves model trains.

And whether you are an experienced modeler or someone who just likes trains, you are welcome to come and visit this club's great layout.

If you have a train you would like to run, you're welcome to bring it along on the second, third, or fifth Tuesday evenings to run it. (Just drop them a note at [president@belmontshorerr.org](mailto:president@belmontshorerr.org) ahead of time to ensure the layout is up and running.)

The club meets every Tuesday evening.





Belmont Shore RR Club's Open House events are very popular. The next one will be June 2 and 3 from 10 a.m.-4 p.m. each day. There's free admission and a free swap meet on Saturday.

**Belmont Shore Model Railroad Club**

3601 S. Gaffey Street, Angels Gate Park, Building 824, Peninsula  
310-831-6262, [www.BelmontShoreRR.com](http://www.BelmontShoreRR.com)

**Visit us on the web**

[www.VisitSanPedro.org](http://www.VisitSanPedro.org)

**Facebook**

[www.Facebook.com/VisitSanPedroCalifornia](http://www.Facebook.com/VisitSanPedroCalifornia)

[www.Facebook.com/VisitLosAngeles](http://www.Facebook.com/VisitLosAngeles)

[www.Facebook.com/MeetingsReunionsInSanPedroCalifornia](http://www.Facebook.com/MeetingsReunionsInSanPedroCalifornia)

[www.Facebook.com/BestDiningSanPedro](http://www.Facebook.com/BestDiningSanPedro)

**Twitter**

[@sanpedrocvb](https://twitter.com/sanpedrocvb)

**Instagram**

[@sanpedrocvb](https://www.instagram.com/sanpedrocvb)



## Golf

**The San Pedro, Harbor, Palos Verdes Peninsula, and Catalina areas have a number of outstanding public golf venues with reasonable prices.**

Play a course overlooking the Pacific Ocean—several from which to choose—or try the surprisingly competitive Harbor Park Municipal Course. It's all good.

### The Links at Terranea

Dramatic oceanfront collection of nine championship-caliber par three holes course with stunning views of the Pacific and Catalina. Reasonable rates. Open daily 7:30 a.m.-5:30 p.m.

**Terranea Resort**, 100 Terranea Way, Rancho Palos Verdes, Peninsula  
Buddy Nichols, PGA, Director of Golf, Mike Hill, PGA, Head Golf Professional  
310-265-2755, [www.terranea.com](http://www.terranea.com)

### Los Verdes Golf Course

Beautiful, Billy Bell-designed course that offering great ocean views (and the nearby ocean makes putting a real challenge on almost every hole). Considered by many to be one of the best golf values anywhere.

**Los Verdes Golf Course**, 7000 W. Los Verdes Drive, Rancho Palos Verdes, Peninsula  
310-377-7888, [www.losverdesgc.com](http://www.losverdesgc.com)

### Palos Verdes Golf Club

Designed by the same team as Rivera, Bel Air, and Los Angeles (North Course) Country Clubs. It's 6219 yards and the use of the natural terrain, barrancas, creeks, and hills makes it enjoyable and challenging for players of all abilities. Fore magazine called it "the hidden gem" in Southern California.

Non-residents' and Palos Verdes Estates residents' playing times available Mondays, Tuesdays, and Thursdays after 1 p.m.; Wednesdays and Fridays after 2 p.m.

**Palos Verdes Golf Club**, 3301 Via Campesina, Palos Verdes Estates, Peninsula  
310-375-2533, [www.pvgc.com](http://www.pvgc.com)

### Catalina Island Golf Course

Oldest operating course west of the Rockies. Nine holes and two sets of tees for 18-hole play. Former home of the Bobby Jones Invitational Tournament. Open 7 a.m.-6 p.m.

**Catalina Island Golf Course**, 1 Country Club Dr., Avalon, Catalina Island  
310-510-0530, [www.catalinaislandgc.com](http://www.catalinaislandgc.com)

### Harbor Park Municipal Golf Course

Nine-hole par 36 regulation course designed by William F. Bell and built in 1958 with a complete renovation in 1994.

**Harbor Park Municipal Golf Course**, 1235 N. Figueroa Place, Wilmington 310-549-4953, [www.golf.lacity.org/cdp\\_harbor.htm](http://www.golf.lacity.org/cdp_harbor.htm)

### Harbor Golf Practice Center

Open seven days from 6 a.m.-10 p.m. with driving range, putting green, chipping area, and sand bunkers. Full range of PGA instructors available.

**Harbor Golf Practice Center**, 1700 W. L St., Wilmington. 310-835-3000, [www.HarborGolfPracticeCenter.com](http://www.HarborGolfPracticeCenter.com)



## For Mariners

**San Pedro is an outstanding port of call or home port for any sailor, power or canvas.**

In addition to many outstanding marinas, many with guest anchorages, we've got the services you need. And the harbor is protected by federal breakwaters. There are three pump-out stations: Cabrillo Marina, 224 Whalers Walk, San Pedro; Cabrillo Marine Fuel Dock, 210 Whalers Walk, San Pedro; and Cabrillo Way Marina, 2293 Miner Street, San Pedro. There is one launch ramp off the parking lot at Cabrillo Beach. Click [here](#) for a map to the Cabrillo Beach Launch Ramp. You'll also find five yacht clubs in this harbor and the area offers all the dining and recreation choices you want. Plus, you're close to everything in Southern California.

### Navigation Notes

33° 44' 9" N

118° 17' 29" W

Magnetic declination +11° 47'

Declination is positive (east)

Inclination 58° 34'

### Key Contacts

**Coast Guard Station LA/Long Beach** 310-833-1600

**Harbor Master** 310-510-0535

**Marine Operator** VHF 24 or 26

**Los Angeles Yacht Club**, 310-831-1203

**Cabrillo Way Marina** Berths 42-43, 310-514-4985

**Cabrillo Beach Yacht Club** Berth 35, 310-519-1694

**Cabrillo Way Marina** Berths 42-43, 310-514-4985

**Holiday Harbor-Cabrillo Marina** Berth 34, 310-833-4468

**San Pedro Marina** Berth 80, 31 285 Whalers Walk, Waterfront, 310-519-8177

**Two Harbors Shore** Boat (to Isthmus Cove, Fourth of July Cove, and Cherry Cove), 310-510-4254

Our *Mariner's Guide* is available at [www.VisitSanPedro.org](http://www.VisitSanPedro.org) with the latest information of interest to boaters, including where to shop and dine, transportation information, attractions, and more for your visit to San Pedro.

You can get your Port of Los Angeles Mariner's Guide at the link available on [www.portoflosangeles.org/business/pilot-service](http://www.portoflosangeles.org/business/pilot-service). It includes technical information the captains of every type and size vessel need to know about sailing into Los Angeles.

Sail on in. The water's always fine in San Pedro.



## Fun Attractions for the Family

San Pedro has lots of attractions that appeal to the whole family. (But you might not want to tell the children that many of these attractions can be very educational.)

### Spirit Cruises

Hour-long harbor cruises, available in Long Beach Harbor. Whale watching, private events, dinner cruises, wedding cruises. Call for schedules and information. From Long Beach's Shoreline Village. 310-548-8080, [www.SpiritMarine.com](http://www.SpiritMarine.com)

### Cabrillo Beach

A good part of a day—or even all day—can be spent at Cabrillo Beach. On its north side, Cabrillo Beach is a calm, sandy shoreline, protected by the Los Angeles Harbor breakwater. Head south a couple hundred yards and you're at Hurricane Gulch, the open Pacific Ocean waters with afternoon winds that make this a great spot for windsurfing and other water activities. And there's even more to do at Cabrillo Beach, like visiting the historic 1932 Bathhouse.

#### Cabrillo Beach

City of Los Angeles Department of Recreation and Parks  
3720 Stephen M. White Dr., San Pedro, CA 90731  
310-548-2909

### Cabrillo Marine Aquarium

Another thing you can do at Cabrillo Beach is visit San Pedro's own a well-regarded and very active aquarium and marine research facility. The Cabrillo Marine Aquarium offers an extensive regular series of educational activities and programs for all ages and lots of exhibits to see in the 21,000- square foot facility designed by noted architect Frank Gehry. It houses the largest collection of Southern California marine life on display in the world, an outdoor tide pool touch tank, teaching laboratory, auditorium, research lab, and gift shop.

#### Cabrillo Beach Marine Aquarium

3720 Stephen M. White Drive  
San Pedro, CA 90731  
310-548-7562  
[www.CabrilloMarineAquarium.org](http://www.CabrilloMarineAquarium.org)

### Belmont Shore Model Railroad Club

It meets every Tuesday evening (with opportunities to run your own cars) and has full weekend open houses twice a year. A very friendly group whether you're experienced or now—or just want to see some neat trains!

#### Belmont Shore Model Railroad Club

3601 S. Gaffey Street, Angels Gate Park, Building 824, Peninsula  
310-831-6262, [www.BelmontShoreRR.com](http://www.BelmontShoreRR.com)

### Fanfare Fountain and Other Waterfront Fountains

The Fanfare Fountain is a great place for the children to cool off in the daytime and a show for the whole family—especially at night when the lights come on. It's actually two fountains, both with synchronized music and light, that put on great musical shows. You can't swim in the fountains, but a walkway passes between them that, if you venture through it, you've got a good chance of a drenching, or at least a few sprinkles. Take a few steps north, across Swinford Avenue and you'll find a quiet reflecting pool. Head south on the Waterfront Promenade and you'll find an interactive fountain at 2nd Street that pops right out of the ground and you can get as wet as you want. There's an hour's free parking at the World Cruise Center lot.

#### Fanfare Fountain

Southeast corner of Harbor Blvd. and Swinford Street  
San Pedro, CA 90731  
310-548-7562

### Old Fire Station 36 Museum

This great museum includes remarkable Los Angeles Fire Department apparatus, artifacts from the San Pedro area, and a store with souvenirs. It's located in what's commonly known as San Pedro City Hall, but is actually the City of Los Angeles Municipal Building. And it's a building that will look familiar to you from the many films and television episodes that have used it as a backdrop. The museum is open Saturdays from 10 a.m.-3 p.m.

#### Old Fire Station 36 Museum

638 Beacon Street  
San Pedro, CA 90731  
323-464-2727

### Ft. MacArthur Museum

The museum is located in the corridors (built into the cliffs) of historic Battery Osgood-Farley, from the days when Ft.

MacArthur was a coastal defense with big guns. It interprets and preserves history from the days before World War I to the Cold War. Ft. MacArthur Museum is open Tuesdays, Thursdays, weekends, and holidays from 10 a.m.-5 p.m.

**Fort MacArthur Museum**

3601 S. Gaffey St.  
San Pedro, CA 90731  
310-548-2631

## **Marine Mammal Care Center**

The Marine Mammal Care Center at Fort MacArthur is a hospital for ill, injured, and orphaned marine mammals, such as California sea lions, northern elephant seals, harbor seals, and northern fur seals. The animals are treated and when possible released back into the ocean. You'll get to see these great creatures up close (but through a fence) as they progress in their recoveries. Helpful volunteers are on hand to explain the work and answer questions about the animals.

**Marine Mammal Care Center at Ft. MacArthur**

3601 S. Gaffey Street  
San Pedro, CA 90731  
310-548-5677, [www.MarineMammalCare.org](http://www.MarineMammalCare.org)

## **SS Lane Victory**

A real World War II era steamship that still operates and tells the Merchant Marine story. It includes a very nice museum with an impressive collection of ship models, including big builder's models. If you want to learn about what it was really like to work on a merchant ship, this is one of the few places it's possible. And it's a great place to learn about the real patriotism, men who suffered the highest casualty rates during World War II and who saw a lot of action.

**SS Lane Victory**

Berth 49, Waterfront  
310-519-9545, [www.TheLaneVictory.org](http://www.TheLaneVictory.org)

## **Los Angeles Maritime Institute**

Los Angeles Maritime Institute (LAMI) operates the only twin brigantines in the world, the Irving Johnson and the Exy Johnson, the official tall ships of the City of Los Angeles, as well as the Swift of Ipswich. LAMI also is home to the Topsail youth leadership program. The vessels go out on family adventure, sunset, and pot luck sunset sails and participants get a chance to pull lines. Check its web site for the sailing calendar.

**Los Angeles Maritime Institute**

Berth 73, Suite 2,  
San Pedro, CA 90731  
310-833-6055, [www.lamitopsail.org](http://www.lamitopsail.org)

## **Los Angeles Maritime Museum**

At the foot of 6th Street at Harbor Blvd. you'll find a building where from 1941 to 1963 hundreds of cars and people used to stream into and out of town every day: the Municipal Ferry Building. The building now houses the Los Angeles Maritime Museum, which displays and interprets the history of the Los Angeles Harbor. Its exhibits include permanent and temporary installations that tell the story of the canneries, ships, people, and other maritime history of the area. The museum is open Tuesday through Sunday from 10 a.m.-5 p.m. with last entry at 4:30 p.m. Admission is \$3 for adults, \$1 for youth and senior citizens, and children are free.

**Los Angeles Maritime Museum**

Berth 84, Foot of 6th Street  
San Pedro, California 90731  
310-548-7618, [www.LAMaritimeMuseum.org](http://www.LAMaritimeMuseum.org)

## **Pt. Fermin Lighthouse Historic Site and Museum**

The lighthouse was built in 1874 and served as a warning to mariners about the cliffs and rocks around it as they made their way in, out, and past the growing Los Angeles Harbor. This Victorian Stick Style building, which housed the light keepers' families as well as the large light and lens, is beautifully restored and preserved with artifacts showing the way of life. The lighthouse is open Tuesday through Sunday from 1-4 p.m. It is closed on major holidays and when there are special events in Pt. Fermin Park, where it is located. Admission is free, but a donation is requested. Tours are offered at 1, 2, and 3 p.m. Children shorter than 40 inches are not admitted into the lighthouse's tower.

**Point Fermin Lighthouse Historic Site and Museum**

807 W. Paseo Del Mar  
San Pedro, CA 90731  
310-241-0684, [www.pointferminlighthouse.org](http://www.pointferminlighthouse.org)

**Please note:** Pt. Fermin Park is a very beautiful place. Below it you will the very rough sea coast of rocks that was one of the reasons the lighthouse was built: to keep ships from crashing into the rocks. There is a wall around the park above the

sea coast with warnings not to climb on it. PLEASE FOLLOW THESE WARNINGS. Visitors have died climbing on the wall to get photos or a better look at the area below and lost their footing, falling to the death. Also, the area called "Sunken City" is adjacent to the park. This is an area where in 1929, 40,000 square feet of land slid into the ocean. The area is bounded by fences. DO NOT CLIMB OVER THE FENCES. The area is uneven, can still slip, and is dangerous.

### **White Point Tidepools**

The shoreline teems with life and the tidepools at White Point Beach are a great place to see it up close. You're on your own with this activity, but it's close to the shore and can be lots of fun. Be careful of the waves, though. You'll want to park at the bottom of the bluffs in the parking. The charges range from \$2 to \$10.

#### **White Point Beach**

1955 South Paseo Del Mar  
San Pedro, CA 90731  
310-519-1751

**Note:** White Point is currently not accessible from Gaffey Street because of a landslide that took out a portion of the roadway. Western Avenue southbound is the only route.



## Catalina Island

**Less than an hour away on fast boats to reach an island of natural beauty, adventure, fun, elegance, history, and charm. Great for a day or a week.**

There's no way to be bored on **Catalina Island**—or getting there. The boat ride of just about an hour is FAST! And you're likely to see sea life on your way, along with a great view of Los Angeles Harbor's Main Channel on the way in and out from San Pedro. You can also upgrade to the Commodore or Captain's Lounge, an extra bit of luxury.

**The Catalina Sea and Air Terminal** in San Pedro is located at the remodeled waterfront promenade, which is freeway accessible from Los Angeles and Orange Counties. The Catalina Bistro at the Sea and Air Terminal serves beer, wine, appetizers, breakfast, and lunch in the lovely harbor side setting and it has become a favorite of locals for dining even when they're not traveling to Catalina Island. The Express Grill has fast service of soups, sandwiches, burgers, and more. Brochure racks and Catalina Island tour information are available. ATMs are available at all locations. All major credit cards are welcome. Travelers can book sightseeing tours at courtesy desks in the terminal.

View current schedules & fares [www.catalinaexpress.com/schedule-fares.html](http://www.catalinaexpress.com/schedule-fares.html)

On the Island you'll find everything from shopping to great ecotours, marine life exploration activities—including the famous glass-bottom boat—and even a zip line that's already become famous.

From adventure to luxury, Catalina Island has it all. Visit the picturesque town of Avalon or the rustic village of Two Harbors. Avalon is filled with activities on land and sea. Two Harbors is a spectacular remote location with campgrounds and beautiful beaches. Catalina Island is a wonderful getaway for a day, a night, or a week.

Just visit [www.CatalinaExpress.com](http://www.CatalinaExpress.com) or call 800-481-3470 for information about getting to the island and having fun. You can find details about everything on Catalina Island at [www.CatalinaChamber.com](http://www.CatalinaChamber.com).

### **Catalina Express**

Berth 95, LA Waterfront  
800-481-3470, [www.CatalinaExpress.com](http://www.CatalinaExpress.com)

### **Catalina Island Chamber of Commerce & Visitors Bureau**

[www.CatalinaChamber.com](http://www.CatalinaChamber.com)

## Catalina Island Museum

It's a treasure that houses treasures. The Catalina Island Museum collects, preserves, and promotes the culture and history of Santa Catalina Island and brings unique exhibitions to Catalina. The museum's collections are comprised of artifacts from and about Santa Catalina Island. You'll see some real history here that's made Catalina Island a favorite destination.

Through this month you can also see the Peter Shire Sculpture Installation in the Ada Blanche Wrigley Schreiner Building.

Admission is \$17 for adults (\$15 for seniors, military, and students with ID) and free for age 15 and younger.

The museum is located at 217 Metropole Avenue, a 10-minute walk from the Catalina Express Terminal.

### **Catalina Island Museum**

217 Metropole Avenue, Avalon  
Catalina Island  
310-510-2414  
[www.CatalinaMuseum.org](http://www.CatalinaMuseum.org)

## Tours

### Southern California/Hollywood

**Sunseeker Tours offers unrivaled eight-hour sightseeing tours of Los Angeles-Hollywood and Beverly Hills, Santa Monica, and Venice Beach.**

Picking up daily from all San Pedro and Long Beach hotels and the World Cruise Terminal, Long Beach Cruise Terminal, and LAX.

Enjoy a full-day eight-hour tour. That gives visitors plenty of time to experience the sites, take photos, see the shops, or just relax and have a great time.

Half-day tours are also available starting from Hollywood and West Hollywood.

Sunseekers Tours provides you with the tour you'd give guests visiting your own city – the famous destinations as well as those “only known locally.”

Sunseeker's guests get the lowest tour price available and transportation is included. And it has the highest quality of service and superior tour guides.

It's got charters, too. Use it for your group visiting Southern California.

Sunseeker is perfect for weddings and family reunions. Coaches are available seating 27, 36, 47, or 56 passengers. For smaller groups, vehicles seating 14 or 20 passengers are available.

**And one of the big advantages is airport arrivals and departures.** Sunseeker will pick up any size group from all major airports, transferring them to any destination, or from any location to the airport.

Call Sunseeker Tours at 877-416-5460 or go online to [www.SunSeekerTours.com](http://www.SunSeekerTours.com).

### San Pedro Tours

**Visit San Pedro has local tours for individuals, couples, and groups up to seven passengers available.**

Ride in a comfortable Safari van to see the highlights of the San Pedro and Palos Verdes Peninsula with our tour specialist, Justus Ghormley. He knows the area and gives great insights on his many years as a resident and professional tour guide locally and to many international sites. For information, call us at 310-729-9828 or email [tours@SoCalETC.org](mailto:tours@SoCalETC.org).

## Our Partner Schools

### Alliance Alice M. Baxter High School

461 W. 9th Street, San Pedro  
310-221-0430, [www.BaxterHigh.org](http://www.BaxterHigh.org)



### Christ Lutheran School

28850 S. Western Avenue, Rancho Palos Verdes, Peninsula  
310-831-0848, [www.ChristRPV.com](http://www.ChristRPV.com)



### Holy Trinity School & Preschool

1226 W. Santa Cruz Street, San Pedro  
310-833-0703,  
[www.School.HolyTrinitySP.org](http://www.School.HolyTrinitySP.org)



# The Directory

Where to **Dine, Shop, Experience, Enjoy**

## San Pedro | Harbor | Peninsula | Catalina Island

### Art/Galleries/Museums

**The Banning Museum**, 401 E. M Street, Wilmington. 310-548-2005, [www.TheBanningMuseum.org](http://www.TheBanningMuseum.org)  
**Cabrillo Marine Aquarium**, 3720 Stephen M. White Drive, Cabrillo Beach. 310-548-7562, [www.CabrilloMarineAquarium.org](http://www.CabrilloMarineAquarium.org)  
**Catalina Island Museum**, 217 Metropole Avenue, Avalon, Catalina Island. 310-510-2414, [www.CatalinaMuseum.org](http://www.CatalinaMuseum.org)  
**Downtown Books & Gallery**, 414 W. 6th Street, Downtown. 818-731-1158, [www.DTBooksArt.com](http://www.DTBooksArt.com)  
**Little Fish Theatre**, 777 Centre Street, Downtown. 310-512-6030, [www.LittleFishTheatre.org](http://www.LittleFishTheatre.org)  
**Mario's Art Gallery**, 2438 S. Western Avenue, Peninsula. 310-548-9077, [www.MarioMirkovichFineArt.com](http://www.MarioMirkovichFineArt.com)  
**SS Lane Victory**, Berth 49, 3011 Miner Street, Waterfront. 310-519-9545, [www.TheLaneVictory.org](http://www.TheLaneVictory.org)  
**Our Creations** décor, crafts, & supplies, wedding, party, 416 West 6<sup>th</sup> Street, Down-town. 310-519-8231  
**Parkhurst Galleries**, 439 W. 6th Street, Downtown. 310-547-3158, [www.ParkhurstGalleries.com](http://www.ParkhurstGalleries.com)  
**San Pedro Arts Association at CRAFTED**, 112 E. 22nd Street, Waterfront. 310-831-2928, [www.SanPedroArt.org](http://www.SanPedroArt.org)  
**Warner Grand Theatre**, 478 W. 6th Street, Downtown... 310-548-7672, [www.WarnerGrand.org](http://www.WarnerGrand.org)

### Food/Dining/Nightlife

**Whale & Ale British Restaurant & Pub**, 327 W. 7th Street, Downtown. 310-832-0363 [www.WhaleAndAle.com](http://www.WhaleAndAle.com)  
**Catalina Bistro & Express Grill**, Catalina Express Sea & Air Terminal, Berth 95 (at Swin-ford and Harbor Blvd., San Pedro Waterfront. 310-707-2440, [www.CatalinaBistro.com](http://www.CatalinaBistro.com)  
**Babouch Moroccan Restaurant & Lounge**, 810 S. Gaffey Street, San Pedro. 310-831-0246, [www.BabouchMoroccan.com](http://www.BabouchMoroccan.com)  
**22nd Street Landing Seafood Grill and Bar**, 141-A W. 22nd Street, Cabrillo Marina, San Pedro Waterfront. 310-548-4400, [www.22ndStreetRestaurant.com](http://www.22ndStreetRestaurant.com)  
**Conrad's Mexican Grill**, 376 W. 6th Street, Downtown 424-264-5452, [www.ConradsMexicanGrill.com](http://www.ConradsMexicanGrill.com)  
**Godmothers Saloon**, 302 W. 7th Street, Downtown. 310-833-1589  
**Happy Diner** American diner and Mexican, 617 S. Centre Street, Downtown. 310-833-6799, [www.HappyDinerSP.com](http://www.HappyDinerSP.com)  
**Happy Diner #2**, 1931 N. Gaffey Street, NW San Pedro  
**Happy Deli**, 530 S. Gaffey Street, Downtown  
**Harborview Event Center at Ft. MacArthur LA AFB**, Hayley Strozier, 310-653-8341, Hayley.Strozier@us.af.mil or Patti Orbeck 310-653-8255, [www.LAFSS.com/Harborview](http://www.LAFSS.com/Harborview)  
**The Original Las Brisas**, 1110 N. Gaffey Street, Suite D., NW San Pedro. 310-833-4395, [www.TheOriginalLasBrisas.com](http://www.TheOriginalLasBrisas.com)  
**Jolly Burrito Grill**, 726 S. Pacific Avenue, Uptown. 760-694-6888, [www.JollyBurrito.com](http://www.JollyBurrito.com)  
**Niko's Pizzeria**, 399 W. 6th Street, Downtown. 310-241-1400, [www.NikosPizzeria.com](http://www.NikosPizzeria.com)  
**Raffaello Ristorante**, 400 S. Pacific Avenue, Uptown. 310-514-0900, [www.RaffaelloRistorante.com](http://www.RaffaelloRistorante.com)

**Sacred Grounds** coffee house, salads, sandwiches, 468 W. 6th Street, Downtown 310-514-0080  
**San Pedro Brewing Company**, 331 W. 6th Street, Downtown. 310-831-5663, [www.SanPedroBrewing.com](http://www.SanPedroBrewing.com)  
**San Pedro Café**, 605 S. Pacific Avenue Suite 103, Downtown. 310-547-0961, [www.SPCafeInc.com](http://www.SPCafeInc.com)  
**Sebastian's Mediterranean Cuisine**, 309 W. 7th Street, Downtown. 424-342-9062, [www.SebastiansMC.com](http://www.SebastiansMC.com)  
**Tanawin Thai Bistro**, 28368 S. Western Avenue, Rancho Palos Verdes, Peninsula. 310-833-1010, [www.TanaWinThai.com](http://www.TanaWinThai.com)  
**Terranea Resort** eight dining venues, 100 Terranea Way, Rancho Palos Verdes. 866-802-8000, [www.Terranea.com](http://www.Terranea.com)  
**Vons Grocery Store** food, liquor, wine, beer sundies, 1221 S. Gaffey Street, San Pedro. 310-832-7063, [www.Vons.com](http://www.Vons.com)  
**West Coast Philly's** cheesesteaks & haogies 1902 S. Pacific Avenue, San Pedro. 424-264-5322, [www.WestCoastPhillys.com](http://www.WestCoastPhillys.com)  
**Wienerschnitzel**, 230 N. Gaffey Street, San Pedro. [www.Wienerschnitzel.com](http://www.Wienerschnitzel.com)

### Maritime/Boating

**Los Angeles Yacht Club**, 285 Whalers Walk, Cabrillo Marina. 310-831-1203, [www.LAYC.org](http://www.LAYC.org)  
**Cabrillo Way Marina**, 2293 Miner Street, Cabrillo Way Marina. 310-514-4985, [www.CabrilloWay.com](http://www.CabrilloWay.com)  
**Los Angeles Maritime Institute**—Official LA Tall Ships, Berth 73, Suite 2, San Pedro Waterfront. 310-833-6055, [www.LAMITopSail.org](http://www.LAMITopSail.org)  
**Recommended Hotels**  
**Best Western Plus San Pedro Hotel & Suites**, 111 S. Gaffey Street, Above Gaffey. 310-514-1414  
**Terranea Resort**, 100 Terranea Way, Rancho Palos Verdes. 866-802-8000, [www.Terranea.com](http://www.Terranea.com)  
**Vagabond Inn**, 215 S. Gaffey Street. 310-831-8911, [www.VagabondInn.com/Vagabond-Inn-San-Pedro](http://www.VagabondInn.com/Vagabond-Inn-San-Pedro)  
**DoubleTree by Hilton**, 2800 Via Cabrillo Marina San Pedro Waterfront. 310-514-3344.

### Shopping & Services

**Bringelson Jewelers**, 461 W. 6th Street, Downtown. 310-832-5482, [www.FaceBook.com/BringelsonJewelers](http://www.FaceBook.com/BringelsonJewelers)  
**Ms. Alexander** women's fashions, 479 W. 6th Street, Downtown. 310-953-6110, [www.MsAlexander.net](http://www.MsAlexander.net)  
**Our Creations** décor, crafts, & supplies, wedding, party 416 West 6<sup>th</sup> Street, Down-town. 310-519-8231  
**Rok 'n' Ell Baby Boutique & More**, 1438 W 8th Street, Weymouth Corners. 310-832-4145, [www.RoknEllBaby.com](http://www.RoknEllBaby.com)  
**Urban Feet & Skate** 329 W. 6th Street, Downtown 310-832-9364, [www.UrbanFeetAndSkate.net](http://www.UrbanFeetAndSkate.net)

### Health, Fitness, & Recreation

**Catalina Express**, Berth 95, San Pedro Waterfront: Catalina Landing, Long Beach. 800-481-3470, [www.CatalinaExpress.com](http://www.CatalinaExpress.com)  
**All Fit** conditioning, nutrition, mindfulness, 279 W. 7th Street, Downtown. 310-424-287-0432, [www.AllFitGroup.com](http://www.AllFitGroup.com)  
**Belmont Shore Railroad Club**, Angels Gate Park, 3601 S. Gaffey Street, Peninsula .310-831-6262, [www.BelmontShoreRR.com](http://www.BelmontShoreRR.com)  
**Dr. Ja'nae Brown, PT, DPT** physical therapy. 310-548-5984, [www.DRJanaeBrownPT.com](http://www.DRJanaeBrownPT.com)

**Lanta Salon**, 300 E. 4th Street, Suite A111, Long Beach. 310-521-0828, [www.LantaSalon.net](http://www.LantaSalon.net)  
**Spirit Cruises**, Dock 9, Shoreline Village, Long Beach. 310-548-8080, [www.SpiritMarine.com](http://www.SpiritMarine.com)

### Real Estate

**Alice Rodriguez Realtor, Keller Williams**, 28901 S. Western Avenue, Suite 101, Rancho Palos Verdes, Peninsula. 310-738-2511. Mobile 310-738-2511, [www.kw.com/kw/agent/arod](http://www.kw.com/kw/agent/arod)

### Tours & Transportation

**GOGO Charters Los Angeles**, 4011 W. Jefferson Blvd., Los Angeles. 323-373-3085, [www.gogocharters.com/los-angeles-charter-bus](http://www.gogocharters.com/los-angeles-charter-bus)  
**Sunseeker Tours**, sightseeing Hollywood/Los Angeles. [tours@sunseekertours.com](mailto:tours@sunseekertours.com), [www.SunseekerTours.com](http://www.SunseekerTours.com)

### Our Community

**The Canterbury**, 5801 Crestridge Road, Rancho Palos Verdes, Peninsula. 877-318-1795, [www.TheCanterbury.org](http://www.TheCanterbury.org)  
**Alliance Alice M. Baxter High School**, 461 W. 9th Street, San Pedro 310-221-0430, [www.BaxterHigh.org](http://www.BaxterHigh.org)  
**Christ Lutheran School**, 28850 S. Western Avenue, Rancho Palos Verdes, Peninsula 310-831-0848, [www.ChristRPV.com](http://www.ChristRPV.com)  
**Community Christian Church**, 1903 W. Summerland Drive, Rancho Palos Verdes. 318-832-7304, [www.CCCRPV.org](http://www.CCCRPV.org)  
**The Garden Church**, 429 W. 6th Street, Downtown, [www.GardenChurchSP.org](http://www.GardenChurchSP.org)  
**Holy Trinity School & Preschool**, 1226 W. Santa Cruz Street, San Pedro 310-833-0703, [www.SchoolHolyTrinitySP.org](http://www.SchoolHolyTrinitySP.org)  
**Marine Mammal Care Center**, 3601 S. Gaffey Street, Peninsula. 310-548-5677, [www.MarineMammalCare.org](http://www.MarineMammalCare.org)  
**Marymount California University**, 30800 Palos Verdes Drive East Rancho Palos Verdes 310-377-5501, [www.MarymountCalifornia.edu](http://www.MarymountCalifornia.edu)  
**Ministerios Torrente De Besor** 1491 W. O'Farrell Street, San Pedro, 310-350-901-5490  
**San Pedro United Methodist Church**, 580 W 6th Street. 310-548-1001, [www.SanPedroUMC.org](http://www.SanPedroUMC.org)  
**Random Lengths News**, 1300 S. Pacific Avenue 310- 519-1016, [www.RandomLengthsNews.com](http://www.RandomLengthsNews.com)  
**San Pedro Chamber of Commerce**, 390 West 7th Street, Downtown 310-832-7272, [www.SanPedroChamber.com](http://www.SanPedroChamber.com)  
**Temple Heights Southern Baptist Church**, 888 W. Hamilton Avenue, San Pedro 310-831-5446,  
**The Topaz Building**, 222 W.6th Street, Downtown 310-514-2400, [www.TopazSanPedro.com](http://www.TopazSanPedro.com)  
**The Vue Apartments**, 255 W. 5th Street, Downtown 866-585-1972,

### Visitor Information Center

416 W. 6th Street  
Downtown San Pedro  
424-364-6865

[www.VisitSanPedro.org](http://www.VisitSanPedro.org)



# Churches & Spiritual Organizations

## San Pedro | Harbor | Peninsula | Catalina Island

This is a selective list of churches and spiritual organizations in the region. The organizations selected for inclusion here are partners of Visit San Pedro and/or represent the faiths and services requested most by visitors.

### San Pedro & the Palos Verdes Peninsula

**Community Christian Church**, 1903 W. Summerland Drive, Rancho Palos Verdes. 318-832-7304, [www.CCCRPV.org](http://www.CCCRPV.org)  
Sunday service 10:30 a.m.

**The Garden Church**, 429 W. 6th Street, Downtown, [www.GardenChurchSP.org](http://www.GardenChurchSP.org)  
Sunday work together 2 p.m.; worship together 3 p.m.; eat together 4 p.m.

**Christ Lutheran Church & School** (K-8), 28850 S. Western Avenue, Rancho Palos Verdes, Peninsula  
310-831-0848, [www.ChristRPV.com](http://www.ChristRPV.com)

**Ministerios Torrente De Amor** 1491 W. O'Farrell Street, San Pedro. 310-350-901-5490  
Sunday services in Spanish 9 a.m. & 5 p.m.

**San Pedro United Methodist Church**, 580 W 6th Street. 310-548-1001, [www.SanPedroUMC.org](http://www.SanPedroUMC.org)  
Sunday service 10:30 a.m.

**Temple Heights Southern Baptist Church**, 888 W. Hamilton Avenue, San Pedro 310-831-5446  
Sunday service 11 a.m.

### Largest Roman Catholic Churches

**Mary Star of the Sea Roman Catholic Parish**, 870 W. 8th Street, San Pedro 310-833-0274  
Masses Monday-Saturday 8 a.m. and 5:15 p.m. 7:30 a.m. (English); 9 a.m. (English); 10:30 a.m. (Spanish); Noon (English); 1:30 p.m. (Croatian); 4 p.m. (Italian); 5:15 p.m. Mass of the New Evangelization

**Saints Peter & Paul Catholic Church**, 515 W. Opp Street, Wilmington 310-834-5215  
Masses Saturday 8 a.m. (English); 5 p.m. (English); Sunday 6:30 a.m. (Latin) Tridentine Mass; 8 a.m. (Spanish); 9:30 a.m. (English) \*Tridentine High Mass Third Sunday; 11 a.m. (English); 12:30 p.m. (Spanish); 2 p.m. (Spanish); 5 p.m. (English); 7 p.m. (Spanish)

**St. John Fisher Catholic Church**, 5448 Crest Rd, Rancho Palos Verdes, Peninsula 310-377-2800  
Masses Saturday 5 p.m. Vigil Mass; Sunday 7:30 a.m. Congregational Singing; Sunday 9 a.m. Contemporary Choir; Sunday 10:45 a.m. Parish Choir; Sunday 12:30 p.m. Congregational Singing; 5 p.m. Youth Choir

### Other Area Churches & Spiritual Organizations

**Trinity Lutheran Church**, 1450 W. 7th Street, San Pedro, 310-832-1189, [www.TrinitySanPedro.org](http://www.TrinitySanPedro.org)  
Sunday worship 8:30, 9:30, 10 a.m., 5 p.m.

**San Pedro First Presbyterian Church**, 731 S. Averill Avenue, Weymouth Corners. 310-832-7597, [www.FirstPresSanPedro.org](http://www.FirstPresSanPedro.org)  
Sunday services 9:30 a.m., 5:30 p.m.

**San Pedro Peninsula Church of the Nazarene**, 811 W. 11th Street, San Pedro. 310-832-4100

**The Church of Jesus Christ of Latter-day Saints**, 5845 Crestridge Road, Rancho Palos Verdes. 310-541-0601

**Kingdom Hall of Jehovah's Witnesses**, 1501 Figueroa Street, Wilmington. 310-830-7010

**Norwegian Seamen's Church**, 1035 S Beacon Street, Plaza Park. 310-832-6800

**The Church of Jesus Christ of Latter-Day Saints**, 1635 W. 9th Street, San Pedro. 310-833-9494

**San Pedro Seventh-day Adventist Church**, 1536 S. Cabrillo Avenue, San Pedro. 310-832-7000

**Seventh Church of Christ Scientist**, 882 West 9th Street, San Pedro. 310-832-6673

**Temple Beth El**, 1435 W 7th Street, San Pedro. 310-833-2467

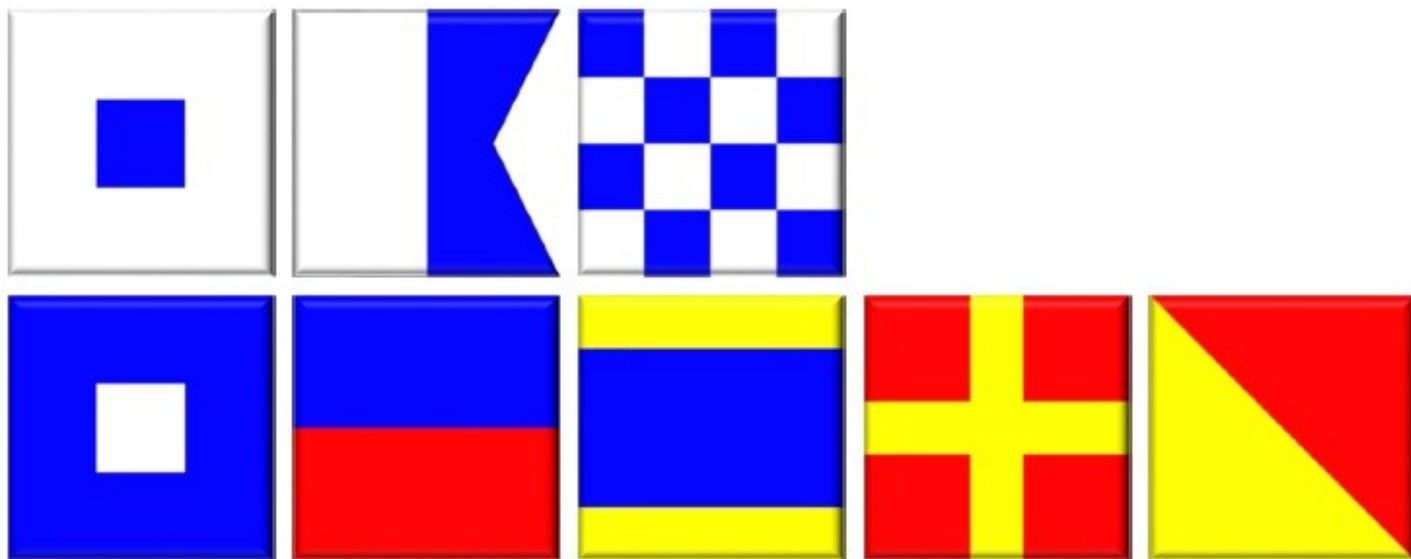


### Visitor Information Center

416 W. 6th Street, Downtown  
424-364-6865  
[www.VisitSanPedro.org](http://www.VisitSanPedro.org)

**Southern California**  
**Education | Tourism | Cultural**  
**Organization**

# Visit



# San Pedro, *California*

416 W. 6th Street  
San Pedro, CA 90731  
Visitor information line 424-364-6865  
Executive office 310-729-9828  
[info@VisitSanPedro.org](mailto:info@VisitSanPedro.org)  
[www.VisitSanPedro.org](http://www.VisitSanPedro.org)